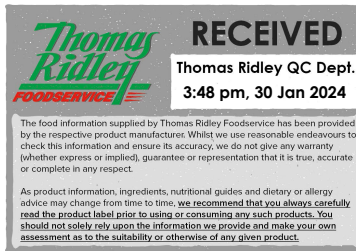


Changed Jan 30, 2024 12:41

Reviewed Jan 30, 2024 12:41

Erudus ID f932fa31094e46c996d380de834de60a

Version 2.0



Thomas Ridley
FOODSERVICE

RECEIVED
Thomas Ridley QC Dept.
3:48 pm, 30 Jan 2024

The food information supplied by Thomas Ridley Foodservice has been provided by the respective product manufacturers. Whilst we use reasonable endeavours to check this information and ensure its accuracy, we do not give any warranty (whether express or implied), guarantee or representation that it is true, accurate or complete in any respect.

As product information, ingredients, nutritional guides and dietary or allergy advice may change from time to time, we recommend that you always carefully read the product label prior to using or consuming any such products. You should not solely rely upon the information we provide and make your own assessment as to the suitability or otherwise of any given product.



Scott's Porage Original Porridge Oats 3kgx 4

Scott's Porage Original Porridge Oats 4x3kg

PRODUCT DESCRIPTION

Scott's Rolled Oats

Brand	Walkers Snacks Limited (PepsiCo)
Manufacturer Product Code	300001006
Product Type	Food
Product Category	Grains
Storage Type	Ambient
Erudus ID	f932fa31094e46c996d380de834de60a
Specification Type	Cereals



Inner Component GTIN	05000108199007
Outer Case GTIN	05000108199014



INGREDIENTS

Ingredient Declaration

100% Scott's Rolled **Oats**, without anythin' added

ALLERGENS

Product Contains:

Celery/Celeriac	No	Mustard	No
Cereals Containing Gluten	Yes	Nuts (Tree)	No
Barley	May Contain	Almond nuts	No
Oats	Yes	Brazil nuts	No
Rye	No	Cashew nuts	No
Wheat (including Spelt and Khorasan)	May Contain	Hazelnuts	No
Crustacea	No	Macadamia (Queensland) nuts	No
Eggs	No	Pecan nuts	No
Fish	No	Pistachio nuts	No
Lupin	No	Walnuts	No
Milk	No	Peanuts	No
Molluscs	No	Sesame Seeds	No
		Soybeans	No
		Sulphur Dioxide and Sulphites	No

Risk Source:

Allergen Statement On Pack

For allergens, see ingredients in bold.

Additional Allergen Information

May Contain Wheat, barley.

SUPPLEMENTARY
INGREDIENT
INFORMATION
ADDITIVES

GM Protein/DNA No

Product Contains:

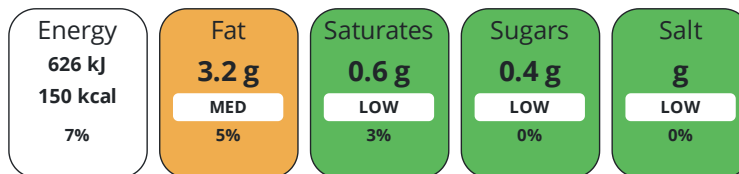
DIET
SUITABILITY

Vegan Diet Suitable for

Vegetarian Diet Suitable for

NUTRITIONAL
INFORMATION

Each 40g/ml serving contains:



of your reference intake.

Typical values per 40g/ml : Energy 150kcal / 626kj

Nutrient	per 100g	RI per 100g	per 40g serving	RI per 40g serving	per 40g of prepared product
Energy (kJ)	1565 kJ	19%	626 kJ	7%	1144 kJ
Energy (kcal)	374 kcal	19%	149.6 kcal	7%	272 kcal
Fat	8 g	11%	3.2 g	5%	7.7 g
of which Saturates	1.5 g	8%	0.6 g	3%	3.5 g
Carbohydrate	60 g	23%	24 g	9%	37 g
of which Sugars	1 g	1%	0.4 g	0%	13 g
Fibre	9 g		3.6 g		3.6 g
Protein	11 g	22%	4.4 g	9%	13 g
Salt	0 g	0%	-		0.3 g

Serving Size 40 g

Serving Size Description This pack contains 75 servings

Number of Servings 75 Servings

Source of Nutritional Information Manufacturers analysis

SUPPLEMENTARY
NUTRITIONAL
INFORMATION

HFSS Status No

HFSS (HIGH IN
FAT, SALT AND
SUGAR)

HANDLING &
STORAGE
INFORMATION

Directions For Use

This pack contains 75 servings

Storage Instructions

Store in a Cool, Dry Place.

Storage Instructions After Opening

Once opened, porage is best eaten within two months. Or it lasts longer if you store it in an airtight container.

Shelf Life from Time of Production 364 Days

Exempt From Shelf Life Labelling No

ORIGIN

Product Country of Origin/Place of United Kingdom

Provenance

Additional Origin Details

Milled in Scotland

PRODUCT CHARACTERISTICS CONFIGURATION

Standards Testing

Case Configuration

Inner Pack Configuration

Variable Inner Components in Outer Case	No
Total Quantity of Inner Components in Outer Case	4 Units
Is the Outer Case Splittable?	No

PRODUCT WEIGHTS

Inner Component

Variable Weight Consumer Item	No
Inner Component Weight	3 kg

Outer Case

Outer Case Gross Weight	15.39 kg
Outer Case Net Weight	12 kg

PRODUCT DIMENSIONS

Inner Component

Inner Component Depth	95 mm
Inner Component Width	230 mm
Inner Component Height	348 mm

Outer Case

Outer Case Depth	411 mm
Outer Case Width	235 mm
Outer Case Height	358 mm

PALLET INFORMATION

Quantity of Cases Per Pallet Layer	10 Cases
Quantity of Layers Per Pallet	4 Layers
Quantity of Cases Per Pallet	40 Cases

Pallet Height	1.43 MTR
Pallet Gross Weight	555.64 kg

OTHER INFORMATION CONTACT INFORMATION

Address

Walkers Snacks Limited (PepsiCo)
 450 South Oak Way
 Green Park
 Reading
 RG2 6UW
 United Kingdom

The information on the [Erudus System](#) has been supplied by the manufacturers of the products and, whilst the owners of the Erudus System take steps to ensure the information is regularly updated, they give no warranty and no guarantee that the information is accurate. Product information and ingredients may change, please always read product labels carefully in addition to using the information provided by Erudus.

We do not accept liability for any inaccuracies or incorrect information contained on this site. Please visit <http://www.erudus.com/terms-and-conditions> for full terms and conditions.