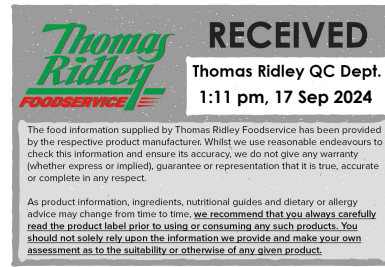


Changed Sep 16, 2024 14:02

Reviewed Sep 16, 2024 14:02

Erudus ID 36424f19785c47c790e245c1b37459bf

Version 2.0



76147

# Ambrosia Devon Custard Pot 120g

Devon Custard 12x120g

## PRODUCT DESCRIPTION

Devon Custard made with West Country Milk.

|                           |                                  |
|---------------------------|----------------------------------|
| Brand                     | Ambrosia                         |
| Manufacturer Product Code | 1007252                          |
| Product Type              | Food                             |
| Product Category          | Desserts                         |
| Storage Type              | Ambient                          |
| Erudus ID                 | 36424f19785c47c790e245c1b37459bf |
| Specification Type        | Generic                          |



|                      |                |
|----------------------|----------------|
| Inner Component GTIN | 50117741       |
| Outer Case GTIN      | 05000117803223 |



## INGREDIENTS

### Ingredient Declaration

Skimmed **MILK, BUTTERMILK**, Sugar, Modified Starch, Palm Oil, Whey (**MILK**), Natural Flavouring, Colours (Curcumin, Annatto Norbixin).

### Ingredient Statements

Total Milk Content 75%.

## ALLERGENS

Product Contains:

|   |     |                                      |    |
|---|-----|--------------------------------------|----|
| <b>Celery/Celeriac</b>                      | No  | <b>Mustard</b>                       | No |
| <b>Cereals Containing Gluten</b>            | No  | <b>Nuts (Tree)</b>                   | No |
| <b>Barley</b>                               | No  | <b>Almond nuts</b>                   | No |
| <b>Oats</b>                                 | No  | <b>Brazil nuts</b>                   | No |
| <b>Rye</b>                                  | No  | <b>Cashew nuts</b>                   | No |
| <b>Wheat (including Spelt and Khorasan)</b> | No  | <b>Hazelnuts</b>                     | No |
| <b>Crustacea</b>                            | No  | <b>Macadamia (Queensland) nuts</b>   | No |
| <b>Eggs</b>                                 | No  | <b>Pecan nuts</b>                    | No |
| <b>Fish</b>                                 | No  | <b>Pistachio nuts</b>                | No |
| <b>Lupin</b>                                | No  | <b>Walnuts</b>                       | No |
| <b>Milk</b>                                 | Yes | <b>Peanuts</b>                       | No |
| <b>Molluscs</b>                             | No  | <b>Sesame Seeds</b>                  | No |
|   |     | <b>Soybeans</b>                      | No |
|   |     | <b>Sulphur Dioxide and Sulphites</b> | No |

### Additional Allergen Information

For allergens, see ingredients in bold.

SUPPLEMENTARY  
INGREDIENT  
INFORMATION

|                                       |     |
|---------------------------------------|-----|
| <b>Palm Oil</b>                       | Yes |
| <b>Hydrogenated Vegetable Oil/Fat</b> | No  |
| <b>GM Protein/DNA</b>                 | No  |

ADDITIVES

*Product Contains:*

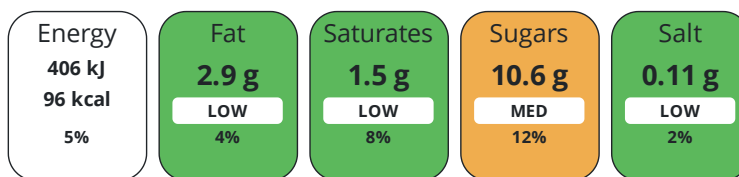
|                                     |    |                                 |    |
|-------------------------------------|----|---------------------------------|----|
| <b>Artificial Antioxidants</b>      | No | <b>Artificial Flavourings</b>   | No |
| <b>Artificial Colours</b>           | No | <b>Artificial Preservatives</b> | No |
| <b>Artificial Flavour Enhancers</b> | No | <b>Artificial Sweeteners</b>    | No |

DIET  
SUITABILITY

|                   |    |                        |              |
|-------------------|----|------------------------|--------------|
| <b>Vegan Diet</b> | No | <b>Vegetarian Diet</b> | Suitable for |
| <b>Halal Diet</b> | No | <b>Kosher Diet</b>     | No           |

NUTRITIONAL  
INFORMATION

Each 100g/ml portion contains:



of your reference intake.

Typical values per 100g/ml : Energy 96kcal / 406kj

| Nutrient                        | per 100g       | RI per 100g | per 120g serving | RI per 120g serving |
|---------------------------------|----------------|-------------|------------------|---------------------|
| <b>Energy (kJ)</b>              | 406 kJ         | 5%          | 487.2 kJ         | 6%                  |
| <b>Energy (kcal)</b>            | 96 kcal        | 5%          | 115.2 kcal       | 6%                  |
| <b>Fat</b>                      | 2.9 g          | 4%          | 3.5 g            | 5%                  |
| <b>of which Saturates</b>       | 1.5 g          | 8%          | 1.8 g            | 9%                  |
| <b>Carbohydrate</b>             | 14.8 g         | 6%          | 17.8 g           | 7%                  |
| <b>of which Sugars</b>          | 10.6 g         | 12%         | 12.7 g           | 14%                 |
| <b>Fibre</b>                    | < 0.5 g        |             | 0.6 g            |                     |
| <b>Protein</b>                  | 2.8 g          | 6%          | 3.4 g            | 7%                  |
| <b>Salt</b>                     | 0.11 g         | 2%          | 0.1 g            | 2%                  |
| <b>Serving Size</b>             | 120 g          |             |                  |                     |
| <b>Serving Size Description</b> | Per pot (120g) |             |                  |                     |
| <b>Number of Servings</b>       | 1 Servings     |             |                  |                     |

VITAMINS AND  
MINERALS

| Nutrient       | per 100g | RI per 100g | per 120g serving | RI per 120g serving |
|----------------|----------|-------------|------------------|---------------------|
| <b>Calcium</b> | 100 mg   | 13%         | 120 mg           | 15%                 |

SUPPLEMENTARY  
NUTRITIONAL  
INFORMATION

HFSS (HIGH IN  
FAT, SALT AND  
SUGAR)

|                    |    |
|--------------------|----|
| <b>HFSS Status</b> | No |
|--------------------|----|

HANDLING & STORAGE INFORMATION

**Directions For Use**

Tastes delicious hot or cold... If microwaving carefully remove the entire foil lid. Heat on full power for 30 seconds. Leave to stand for 1 minute and stir before eating. (800 watt, Cat E microwave).

**Storage Instructions**

Store in a cool, dry place

**Shelf Life from Time of Production** 270 Days

ACCREDITATIONS/ CERTIFICATIONS/ ASSURANCE SCHEMES

**BRCGS Certified**  
**School Approved (The Requirement for School Food Regulation 2014)**

**Roundtable of Sustainable Palm Oil (RSPO)**  
**Other Accreditation**

ORIGIN

**Product Country of Origin/Place of Provenance** United Kingdom

**Additional Origin Details**

N/A

PRODUCT CHARACTERISTICS CONFIGURATION

Standards Testing

Case Configuration

Inner Pack Configuration

**Total Quantity of Inner Components in Outer Case** 12 Units

**Is the Outer Case Splittable?** Yes

PRODUCT WEIGHTS

Inner Component

**Variable Weight Consumer Item** No

**Inner Component Weight** 120 g

**e mark** Yes

Outer Case

**Outer Case Gross Weight** 1.54 kg

**Outer Case Net Weight** 1.44 kg

PRODUCT DIMENSIONS

Inner Component

**Inner Component Depth** 71 mm

**Inner Component Width** 71 mm

**Inner Component Height** 57 mm

Outer Case

**Outer Case Depth** 285 mm

**Outer Case Width** 215 mm

**Outer Case Height** 59 mm

PALLET INFORMATION

**Quantity of Cases Per Pallet Layer** 18 Cases

**Pallet Height** 1 MTR

**Quantity of Layers Per Pallet** 14 Layers

**Pallet Gross Weight** 434 kg

**Quantity of Cases Per Pallet** 252 Cases

PACKAGING

Inner Component Packaging

| Type | Materials                    | Weight | Recycled Plastic % | Recyclable | Returnable | Composite |
|------|------------------------------|--------|--------------------|------------|------------|-----------|
| Pot  | Plastic / PP (Polypropylene) | 5.5 g  | - %                |            |            |           |
| Lid  | Aluminium                    | 0.52 g | - %                |            |            |           |

Outer Case Packaging

| Type               | Materials                                       | Weight  | Recycled Plastic % | Recyclable | Returnable | Composite |
|--------------------|---|---------|--------------------|------------|------------|-----------|
| Case               | Plastic /<br>PS (Polystyrene)                   | 24.93 g | - %                |            |            |           |
| Paper/Polyethylene | Plastic /<br>LDPE (Low Density<br>Polyethylene) | 9 g     | - %                |            |            |           |

Transport Packaging

| Type        | Materials                                       | Weight  | Recycled Plastic % | Recyclable | Returnable | Composite |
|-------------|---|---------|--------------------|------------|------------|-----------|
| Pallet Wrap | Plastic /<br>LDPE (Low Density<br>Polyethylene) | 150 g   | - %                |            |            |           |
| Pallet      | Wood  | 25000 g | - %                |            | Yes        |           |

OTHER INFORMATION

Identification/Health Marks

GB DE002

CONTACT INFORMATION

Address

Premier Foods  
Premier Foods, Premier House  
Centrium Business Park, Griffiths Way  
St Albans  
AL1 2RE  
England

Technical Contact

Nicola Ratcliffe  
Business Unit Coordinator  
nicola.ratcliffe@premierfoods.co.uk

P: (Phone) 01727 815850

Complaints Contact

Consumer Relations Team  
Customer Care  
LCescalations@premierfoods.co.uk

The information on the [Erudus System](#) has been supplied by the manufacturers of the products and, whilst the owners of the Erudus System take steps to ensure the information is regularly updated, they give no warranty and no guarantee that the information is accurate. Product information and ingredients may change, please always read product labels carefully in addition to using the information provided by Erudus.

We do not accept liability for any inaccuracies or incorrect information contained on this site.  
Please visit <http://www.erudus.com/terms-and-conditions> for full terms and conditions.