

**Thomas Ridley**  
FOODSERVICE

**RECEIVED**  
Thomas Ridley QC Dept.  
3:58 pm, 27 Jul 2023

The food information supplied by Thomas Ridley Foodservice has been provided by the respective product manufacturer. Whilst we use reasonable endeavours to check this information and ensure its accuracy, we do not give any warranty (whether express or implied), guarantee or representation that it is true, accurate or complete in any respect.

As product information, ingredients, nutritional guides and dietary or allergy advice may change from time to time, we recommend that you always carefully read the product label prior to using or consuming any such products. You should not solely rely upon the information we provide and make your own assessment as to the suitability or otherwise of any given product.

# Coca-Cola Cherry 330ml



**EAN**  
544900009500

**Target market(s)**  
GB

## Components

### Ingredients

Carbonated Water  
Sugar  
Colour (Caramel E150d)  
Acid (Phosphoric Acid)  
Natural Flavourings including Caffeine

### Nutrition

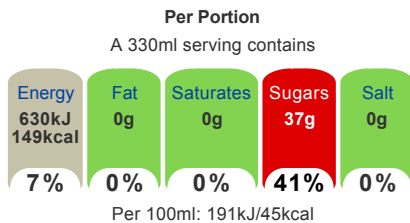
	Per 100ml	Per 330ml %*
Energy	191kJ	630kJ
	45kcal	149kcal (7%)
Fat	0g	0g (0%)
of which saturates	0g	0g (0%)
Carbohydrate	11.2g	37g (14%)
of which sugars	11.2g	37g (41%)
Protein	0g	0g (0%)
Salt	0g	0g (0%)

\*Reference intake of an average adult (8400kJ/2000kcal)

### Calculated Nutrition

	per 100ml	Per 330ml
Energy (kJ)	191	630
Energy (kcal)	45	149
Fat (g)	0	0
of which saturates (g)	0	0
Carbohydrate (g)	11.2	37
of which sugars (g)	11.2	37
Protein (g)	0	0
Salt (g)	0	0

### Front of Pack Nutrition



Reference intake of an average adult (8400kJ/2000kcal)

### Nutrition Other Text

Reference intake of an average adult (8400kJ/2000kcal)

### Reference Intake Statement

Reference Intake Statement - Reference intake of an average adult (8400kJ/2000kcal)

## Product Description

### Brand

Coca-Cola

### Features

This product is GMO free  
This product is gluten free  
This product is allergen free  
This product is suitable for vegetarians/vegans

### Standardised Brand

Brand - Coca-Cola

### Regulated Product Name

Sparkling Cherry Flavour Soft Drink with Plant Extracts

## Marketing

### Company Name

CCEP GB

### Company Address

UB8 1EZ.

### Product Marketing

Coca-Cola Original Taste is the world's favourite soft drink and has been enjoyed since 1886. Coca-Cola Classic Cherry gives you all the classic refreshment of Coca-Cola with a twist of natural cherry flavour.

Coca-Cola Cherry gives you all the classic refreshment of Coca-Cola with a twist of natural cherry flavour.

- Great Coke taste
- Only natural flavours
- No added preservatives

Serve ice cold for maximum refreshment.

Keep cold in the fridge.

Please recycle.

### Brand Marketing

Coca-Cola and the Environment

Coca-Cola is committed to making a positive difference - to the health of the planet, consumers and the communities it serves. The company is working hard to reduce its impact on the environment in everything it does - growing more while using less in areas such as energy and water use, waste reduction and recycling - and by encouraging people to think more about the positive impact they can have on their local environment

### Other Information

Contains caffeine

This product is allergen free

Contains natural flavourings  
Contains added colours

### Further Description

A sparkling soft drink with the great taste of Coca-Cola Cherry.

Coca-Cola Cherry gives you all the classic refreshment of Coca-Cola with a cherry flavour.

Coca-Cola Original Taste is the world's favourite soft drink and has been enjoyed since 1886. Coca-Cola Cherry gives you all the classic refreshment of Coca-Cola with a twist of cherry.

## Health & Lifestyle

### Lifestyle

- Gluten free
- Suitable for Vegans
- Suitable for Vegetarians

### Allergy Advice

Celery - Free From  
Cereals Containing Gluten - Free From  
Crustaceans - Free From  
Eggs - Free From  
Fish - Free From  
Lupin - Free From  
Milk - Free From  
Molluscs - Free From  
Mustard - Free From  
Nuts - Free From  
Peanuts - Free From  
Sesame - Free From  
Soya - Free From  
Sulphur Dioxide/Sulphites - Free From

### Additives

Genetically Modified Ingredients - Free From

## Storage & Usage

### Storage Type

#### Type

Ambient

### Preparation and Usage

Best served chilled

### Storage

Best before: See base of can.  
Store cool and dry.

## Brandbank Captured Pack Data

### Pack Size

330ml e

### Numeric Size

Numeric Size - 330

### Recycling Info

Can - Metal - Widely Recycled

### Pack Type

Type - Can

### Recycling Scheme

- OPRL

## Customer Services

### Manufacturers Address

CCEP GB,  
UB8 1EZ.

### Return To

CCEP GB,  
UB8 1EZ.  
0800 227711  
Coca-Cola.co.uk

### Telephone Helpline

0800 227711

### Web Address

Coca-Cola.co.uk

## Extended Data

### Languages On Pack

- English

### Description Breakdown

Variant - Cherry

