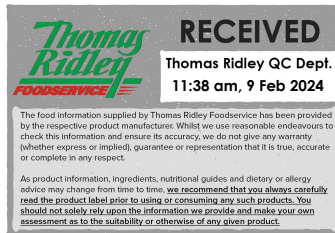


Changed Feb 09, 2024 10:53

Reviewed Feb 09, 2024 10:53

Erudus ID c378ee1256d8431eb55603818c94799b

Version 2.0



Thomas Ridley
FOODSERVICE

RECEIVED
Thomas Ridley QC Dept.
11:38 am, 9 Feb 2024

The food information supplied by Thomas Ridley Foodservice has been provided by the respective product manufacturers. Whilst we use reasonable endeavours to check this information and ensure its accuracy, we do not give any warranty (whether express or implied), guarantee or representation that it is true, accurate or complete in any respect.

As product information, ingredients, nutritional guides and dietary or allergy advice may change from time to time, we recommend that you always carefully read the product label prior to using or consuming any such products. You should not solely rely upon the information we provide and make your own assessment as to the suitability or otherwise of any given product.



Galaxy Instant Hot Chocolate Drink

Cocoa Powdered Drink With Milk Chocolate 6x1kg

PRODUCT DESCRIPTION

Hot Chocolate Powdered Drink

Brand	Aimia Foods Ltd
Manufacturer Product Code	0061KG
Product Type	Drink
Product Category	Hot Chocolate & Malted Drinks
Storage Type	Ambient
Erudus ID	c378ee1256d8431eb55603818c94799b
Specification Type	Drinks



Inner Component GTIN	5023471105512
Outer Case GTIN	5023471105529



INGREDIENTS

Ingredient Declaration

Sugar, Whey Permeate (MILK), Fat Reduced Cocoa Powder (8%), Coconut Oil, Dried Glucose Syrup, Milk Chocolate (3%) (sugar, cocoa butter, skimmed MILK powder, cocoa mass, lactose and protein from whey (MILK), palm fat, whey powder (MILK), MILK fat, emulsifier (SOYA lecithin), vanilla extract), Skimmed MILK Powder, Stabilisers: (guar gum, E466, E340ii, E339ii, E452i), Salt, Flavourings, Anti-Caking agent (E551), Acidity Regulator (E331), MILK Proteins, Emulsifiers (E471).

ALLERGENS

Product Contains:

Celery/Celeriac	No	Mustard	No
Cereals Containing Gluten	No	Nuts (Tree)	No
Barley	No	Almond nuts	No
Oats	No	Brazil nuts	No
Rye	No	Cashew nuts	No
Wheat (including Spelt and Khorasan)	No	Hazelnuts	No
Crustacea	No	Macadamia (Queensland) nuts	No
Eggs	No	Pecan nuts	No
Fish	No	Pistachio nuts	No
Lupin	No	Walnuts	No
Milk	Yes	Peanuts	No
Molluscs	No	Sesame Seeds	No
		Soybeans	Yes
		Sulphur Dioxide and Sulphites	No

SUPPLEMENTARY INGREDIENT INFORMATION

Palm Oil	Yes
Hydrogenated Vegetable Oil/Fat	No
GM Protein/DNA	No

ADDITIVES

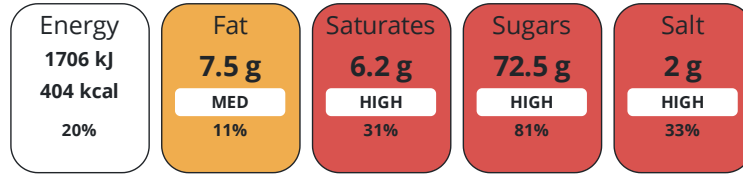
Product Contains:

Artificial Antioxidants	No	Artificial Flavourings	Yes
Artificial Colours	No	Artificial Preservatives	No
Artificial Flavour Enhancers	No	Artificial Sweeteners	No
Vegan Diet	No	Vegetarian Diet	Suitable for
Halal Diet	No	Kosher Diet	No

DIET SUITABILITY

NUTRITIONAL INFORMATION

Each 100g/ml portion contains:



of your reference intake.

Typical values per 100g/ml : Energy 404kcal / 1706kj

Nutrient	per 100g	RI per 100g	per 25g serving	RI per 25g serving
Energy (kJ)	1706 kJ	20%	426.5 kJ	5%
Energy (kcal)	404 kcal	20%	101 kcal	5%
Fat	7.5 g	11%	1.9 g	3%
of which Saturates	6.2 g	31%	1.6 g	8%
Carbohydrate	78.9 g	30%	19.7 g	8%
of which Sugars	72.5 g	81%	18.1 g	20%
Protein	3.5 g	7%	0.9 g	2%
Salt	2 g	33%	0.5 g	8%

Serving Size	25 g
Number of Servings	40 Servings

SUPPLEMENTARY NUTRITIONAL INFORMATION

Trans Fats per 100 g/ml	0 g
--------------------------------	-----

HFSS (HIGH IN FAT, SALT AND SUGAR)

HFSS Status	Yes
HFSS Score	1

HANDLING & STORAGE INFORMATION

Directions For Use

Just add 4 heaped teaspoons (25g) of Galaxy Instant Hot Chocolate Drink into a cup or mug and then pour on hot water and stir.

Storage Instructions

Store in a cool, dry place. May settle in transit.

Shelf Life from Time of Production	547 Days	Exempt From Shelf Life Labelling	No
---	----------	---	----

ACCREDITATIONS/ CERTIFICATIONS/ ASSURANCE SCHEMES



Other Accreditation

N/A

ORIGIN	Product Country of Origin/Place of Provenance		United Kingdom					
	Additional Origin Details							
N/A								
PRODUCT CHARACTERISTICS	Standards Testing							
	HAZARD CONTROLS							
Sieving		Yes	X-ray		Yes			
CONFIGURATION	Case Configuration		Inner Pack Configuration					
	Total Quantity of Inner Components in Outer Case		6 Units					
	Is the Outer Case Splittable?		Yes					
PRODUCT WEIGHTS	Inner Component							
	Inner Component Weight		1 kg					
	e mark		Yes					
	Outer Case							
	Outer Case Gross Weight		6.9 kg					
	Outer Case Net Weight		6 kg					
PRODUCT DIMENSIONS	Inner Component							
	Inner Component Depth		156 mm					
	Inner Component Width		156 mm					
	Inner Component Height		114 mm					
	Outer Case							
	Outer Case Depth		490 mm					
	Outer Case Width		325 mm					
	Outer Case Height		118 mm					
	PALLET INFORMATION	Quantity of Cases Per Pallet Layer		7 Cases	Pallet Height		1.3 MTR	
		Quantity of Layers Per Pallet		10 Layers	Pallet Gross Weight		513.05 kg	
Quantity of Cases Per Pallet		70 Cases						
Inner Component Packaging								
PACKAGING	Type	Materials	Weight	Recycled Plastic %	Recyclable	Returnable	Composite	
	Tub	Paper/Cardboard / Other	70.1 g	- %	No		Yes	
	Lid	Plastic / LDPE (Low Density Polyethylene)	19 g	- %	Yes			
	Other	Aluminium	4.7 g	- %	No			
	Other	Steel	38 g	- %	No			
	Outer Case Packaging							
	Type	Materials	Weight	Recycled Plastic %	Recyclable	Returnable	Composite	
	Tray	Paper/Cardboard / Carton Board	89 g	- %	Yes			
	Label	Paper/Cardboard / Paper	2.5 g	- %	Yes			
	Shrink Wrap	Plastic / LDPE (Low Density Polyethylene)	22.5 g	30 %	No			

Transport Packaging

Type	Materials	Weight	Recycled Plastic %	Recyclable	Returnable	Composite
Pallet Wrap	Plastic	280 g	- %	No		
Pallet	Wood	28000 g	- %	Yes		

OTHER INFORMATION

Intrastat/Taric Code 18069070

Manufacturer Comments

N/A

CONTACT INFORMATION

Address

Aimia Foods Ltd
 Penny Lane
 Haydock
 Merseyside
 WA11 0QZ
 England

Technical Contact

Sophie Wall
 Head of Technical
 sophie.wall@aimiafoods.com

P: (Phone) 01942272900

P: (Phone) 01942 272900

Complaints Contact

Helen Bulmer
 Customer Services Manager
 customer.services@aimiafoods.com

P: (Phone) 01942 408600

The information on the [Erudus System](#) has been supplied by the manufacturers of the products and, whilst the owners of the Erudus System take steps to ensure the information is regularly updated, they give no warranty and no guarantee that the information is accurate. Product information and ingredients may change, please always read product labels carefully in addition to using the information provided by Erudus.

We do not accept liability for any inaccuracies or incorrect information contained on this site.
 Please visit <http://www.erudus.com/terms-and-conditions> for full terms and conditions.