


Changed Jan 31, 2024 10:24

Reviewed Jan 31, 2024 10:24

Erudus ID 2826a8fa8cb846b1aeee3ecbe226f4c5

Version 2.0



Thomas Ridley QC Dept.  
12:37 pm, 31 Jan 2024

The food information supplied by Thomas Ridley Foodservice has been provided by the respective product manufacturer. Whilst we use reasonable endeavours to check this information and ensure its accuracy, we do not give any warranty (whether express or implied), guarantee or representation that it is true, accurate or complete in any respect.

As product information, ingredients, nutritional guides and dietary or allergy advice may change from time to time, we recommend that you always carefully read the product label prior to using or consuming any such products. You should not solely rely upon the information we provide and make your own assessment as to the suitability or otherwise of any given product.



# CADBURY 125GCOMP DCHOC SPRINKLER FT 6CA

Cad 125gdchocsprinkler 6x

## PRODUCT DESCRIPTION

CADBURY CHOCOLATE DRINK 125GR

Brand	Cadbury UK Limited
Manufacturer Product Code	612553
Product Type	Drink
Product Category	Hot Chocolate & Malted Drinks
Storage Type	Ambient
Erudus ID	2826a8fa8cb846b1aeee3ecbe226f4c5
Specification Type	Drinks
Inner Component GTIN	5034660021650
Outer Case GTIN	5034660513872



## INGREDIENTS

### Ingredient Declaration

Ingredients: Sugar, cocoa powder, acidity regulator (potassium carbonates), flavouring.

## ALLERGENS

Product Contains:

<b>Celery/Celериac</b>	No	<b>Mustard</b>	No
<b>Cereals Containing Gluten</b>	No	<b>Nuts (Tree)</b>	No
<b>Barley</b>	No	<b>Almond nuts</b>	No
<b>Oats</b>	No	<b>Brazil nuts</b>	No
<b>Rye</b>	No	<b>Cashew nuts</b>	No
<b>Wheat (including Spelt and Khorasan)</b>	No	<b>Hazelnuts</b>	No
<b>Crustacea</b>	No	<b>Macadamia (Queensland) nuts</b>	No
<b>Eggs</b>	No	<b>Pecan nuts</b>	No
<b>Fish</b>	No	<b>Pistachio nuts</b>	No
<b>Lupin</b>	No	<b>Walnuts</b>	No
<b>Milk</b>	May Contain	<b>Peanuts</b>	No
<b>Molluscs</b>	No	<b>Sesame Seeds</b>	No
		<b>Soybeans</b>	No
		<b>Sulphur Dioxide and Sulphites</b>	No

Risk Source:

### Additional Allergen Information

May contain milk.

FREE FROM CLAIMS

Free From Barley	Yes	Free From Mustard	Yes
Free From Celery/Celeriac	Yes	Free From Nuts	Yes
Free From Crustacea	Yes	Free From Oats	Yes
Free From Eggs	Yes	Free From Peanuts	Yes
Free From Fish	Yes	Free From Rye	Yes
Gluten Free	Yes	Free From Sesame	Yes
Free From Lactose	Yes	Free From Soybeans	Yes
Free From Lupin	Yes	Free From Sulphur Dioxide	Yes
Free From Molluscs	Yes	Free From Wheat	Yes

SUPPLEMENTARY INGREDIENT INFORMATION

Palm Oil	No
Hydrogenated Vegetable Oil/Fat	No
GM Protein/DNA	No

ADDITIVES

Product Contains:

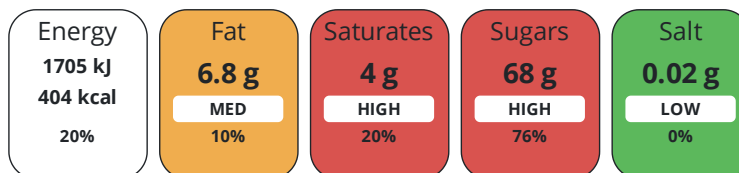
Artificial Flavourings	Yes
Vegetarian Diet	Suitable for
Kosher Diet	No

DIET SUITABILITY

Vegan Diet	No
Halal Diet	No

NUTRITIONAL INFORMATION

Each 100g/ml portion contains:



of your reference intake.

Typical values per 100g/ml : Energy 404kcal / 1705kJ

Nutrient	per 100g	RI per 100g
Energy (kJ)	1705 kJ	20%
Energy (kcal)	404 kcal	20%
Fat	6.8 g	10%
of which Saturates	4 g	20%
Carbohydrate	72 g	28%
of which Sugars	68 g	76%
Fibre	11 g	
Protein	7.5 g	15%
Salt	0.02 g	0%

SUPPLEMENTARY NUTRITIONAL INFORMATION

HFSS (HIGH IN FAT, SALT AND SUGAR)

HFSS Status	No
-------------	----

HANDLING & STORAGE INFORMATION

Directions For Use

Ready To Eat

Storage Instructions

STORE IN A DRY PLACE. PROTECT FROM HEAT.

Shelf Life from Time of Production	730 Days	Exempt From Shelf Life Labelling	No
------------------------------------	----------	----------------------------------	----

ORIGIN	<b>Product Country of Origin/Place of Provenance</b>	United Kingdom					
PRODUCT CHARACTERISTICS CONFIGURATION	Standards Testing						
	Case Configuration	Inner Pack Configuration					
	<b>Total Quantity of Inner Components in Outer Case</b>	6 Units					
PRODUCT WEIGHTS	Inner Component						
	Outer Case						
	<b>Outer Case Gross Weight</b>	1.04 kg					
	<b>Outer Case Net Weight</b>	0.75 kg					
	Inner Component						
PRODUCT DIMENSIONS	<b>Inner Component Depth</b>	77 mm					
	<b>Inner Component Width</b>	77 mm					
	<b>Inner Component Height</b>	86 mm					
	Outer Case						
	<b>Outer Case Depth</b>	235 mm					
	<b>Outer Case Width</b>	156 mm					
	<b>Outer Case Height</b>	87 mm					
PALLET INFORMATION	<b>Quantity of Cases Per Pallet Layer</b>	30 Cases	<b>Pallet Height</b>	1.64 MTR			
	<b>Quantity of Layers Per Pallet</b>	17 Layers	<b>Pallet Gross Weight</b>	558.22 kg			
	<b>Quantity of Cases Per Pallet</b>	510 Cases					
PACKAGING	Inner Component Packaging						
	<b>Type</b>	<b>Materials</b>	<b>Weight</b>	<b>Recycled Plastic %</b>	<b>Recyclable</b>	<b>Returnable</b>	<b>Composite</b>
	Can	Paper/Cardboard	137.4 g	- %			
	Can	Steel	72 g	- %			
	Outer Case Packaging						
	<b>Type</b>	<b>Materials</b>	<b>Weight</b>	<b>Recycled Plastic %</b>	<b>Recyclable</b>	<b>Returnable</b>	<b>Composite</b>
	Case	Paper/Cardboard	24.64 g	- %			
	OTHER INFORMATION CONTACT INFORMATION	Address	Technical Contact				
		Cadbury UK Limited	Dobromira Minarikova & Tomas Sakalik				
		PO Box 12	dobromira.minarikova@mdlz.com				
Bournville Lane		tomas.sakalik@mdlz.com					
Bournville							
Birmingham							
B30 2LU							
England							
	P: (Phone) +44 1214 582 000						

The information on the [Erudus System](#) has been supplied by the manufacturers of the products and, whilst the owners of the Erudus System take steps to ensure the information is regularly updated, they give no warranty and no guarantee that the information is accurate. Product information and ingredients may change, please always read product labels carefully in addition to using the information provided by Erudus.

We do not accept liability for any inaccuracies or incorrect information contained on this site.  
Please visit <http://www.erudus.com/terms-and-conditions> for full terms and conditions.