


Changed Apr 17, 2024 15:40

Reviewed Apr 17, 2024 15:40

Erudus ID 0f8bfc49e2143ddb4ada28520d59e5d

Version 2.0




RECEIVED

Thomas Ridley QC Dept.
9:11 am, 18 Apr 2024

The food information supplied by Thomas Ridley Foodservice has been provided by the respective product manufacturer. Whilst we use reasonable endeavours to check this information and ensure its accuracy, we do not give any warranty (whether express or implied), guarantee or representation that it is true, accurate or complete in any respect.

As product information, ingredients, nutritional guides and dietary or allergy advice may change from time to time, we recommend that you always carefully read the product label prior to using or consuming any such products. You should not solely rely upon the information we provide and make your own assessment as to the suitability or otherwise of any given product.



80117

12" Deep Pan Pizza Crust (x 10)

Deep Pan Pizza Crust

PRODUCT DESCRIPTION

Soft baked, round low fat 12 inch pizza base made from wheat flour.

Brand	Capri Foods Ltd
Manufacturer Product Code	LF523C/CFLF523C
Product Type	Food
Product Category	Pizza & Pizza Bases
Storage Type	Frozen
Erudus ID	0f8bfc49e2143ddb4ada28520d59e5d
Specification Type	Generic



Outer Case GTIN 05060286060025



INGREDIENTS

Ingredient Declaration

WHEAT Flour (71%) (**WHEAT** Flour, Calcium Carbonate, Iron, Niacin, Thiamine), Water, Pre-mix [**WHEAT** Flour (**WHEAT** Flour, Calcium Carbonate, Niacin, Iron, Thiamine), Sugar, Potassium Chloride, Salt, Emulsifier- Mono and Diacetyltartaric acid Esters of Mono- and Diglycerides of Fatty Acids, Flour Treatment Agent- Ascorbic Acid], Rapeseed Oil, Yeast.

ALLERGENS

Product Contains:

Celery/Celery	No	Mustard	No
Cereals Containing Gluten	Yes	Nuts (Tree)	No
Barley	No	Almond nuts	No
Oats	No	Brazil nuts	No
Rye	No	Cashew nuts	No
Wheat (including Spelt and Khorasan)	Yes	Hazelnuts	No
Crustacea	No	Macadamia (Queensland) nuts	No
Eggs	No	Pecan nuts	No
Fish	No	Pistachio nuts	No
Lupin	No	Walnuts	No
Milk	No	Peanuts	No
Molluscs	No	Sesame Seeds	No
		Soybeans	No
		Sulphur Dioxide and Sulphites	No

SUPPLEMENTARY INGREDIENT INFORMATION

Palm Oil	No
Hydrogenated Vegetable Oil/Fat	No
GM Protein/DNA	No

ADDITIVES

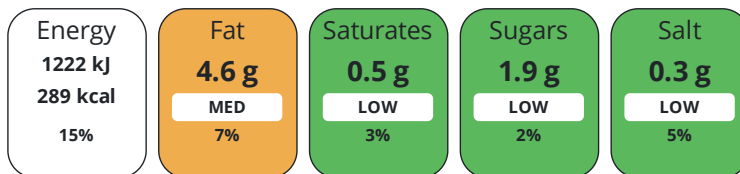
Product Contains:

Artificial Antioxidants	No	Artificial Flavourings	No
Artificial Colours	No	Artificial Preservatives	No
Artificial Flavour Enhancers	No	Artificial Sweeteners	No
Vegan Diet	Suitable for	Vegetarian Diet	Suitable for
Halal Diet	No	Kosher Diet	No

DIET
SUITABILITY

NUTRITIONAL
INFORMATION

Each 100g/ml portion contains:



of your reference intake.

Typical values per 100g/ml : Energy 289kcal / 1222kj

Nutrient	per 100g	RI per 100g
Energy (kJ)	1222 kJ	15%
Energy (kcal)	289 kcal	14%
Fat	4.6 g	7%
of which Saturates	0.5 g	3%
of which Mono-unsaturates	2.1 g	
of which Polyunsaturates	1.5 g	
Carbohydrate	53 g	20%
of which Sugars	1.9 g	2%
Fibre	2 g	
Protein	7.9 g	16%
Salt	0.3 g	5%
Sodium	119 mg	

Source of Nutritional Information Calculation based on known values of ingredients

VITAMINS AND
MINERALS

Nutrient	per 100g	RI per 100g
Vitamin A	0 µg	0%
Vitamin C	0 mg	0%
Folate/Folic Acid	16 µg	8%
Calcium	100 mg	13%
Iron	1.4 mg	10%
Zinc	0.4 mg	4%

SUPPLEMENTARY
NUTRITIONAL
INFORMATION

Cholesterol per 100 g/ml (UK/FR)	0 g
Trans Fats per 100 g/ml	0 g

HANDLING &
STORAGE
INFORMATION

Directions For Use

From Frozen: Remove all packaging, add the topping* on the base, place directly on a baking tray and cook the product in a preheated oven at 180°C /350°F/ Gas Mark 4, for 10 to 12 minutes. Ensure the product is piping hot before serving. *Topping not provided with product.

Storage Instructions

Keep frozen between -18°C and -25°C. Do not refreeze once thawed.

Shelf Life from Time of Production	455 Days	Exempt From Shelf Life Labelling	No
---	----------	---	----

ACCREDITATIONS/
CERTIFICATIONS/
ASSURANCE
SCHEMES
ORIGIN

BRCGS Certified		Other Accreditation	
------------------------	--	----------------------------	--

Product Country of Origin/Place of	United Kingdom
---	----------------

Provenance

Additional Origin Details

UK

PRODUCT
CHARACTERISTICS
CONFIGURATION

Standards Testing

Case Configuration	Inner Pack Configuration
--------------------	--------------------------

Total Quantity of Inner Components in	10 Units
--	----------

Outer Case

Is the Outer Case Splittable?	No
--------------------------------------	----

PRODUCT
WEIGHTS

Inner Component

Variable Weight Consumer Item	Yes
--------------------------------------	-----

e mark	Yes
---------------	-----

Outer Case

Outer Case Gross Weight	4.4 kg
--------------------------------	--------

Outer Case Net Weight	4.1 kg
------------------------------	--------

PRODUCT
DIMENSIONS

Inner Component

Inner Component Depth	300 mm
------------------------------	--------

Inner Component Width	300 mm
------------------------------	--------

Inner Component Height	16 mm
-------------------------------	-------

Inner Component Diameter	300 mm
---------------------------------	--------

Outer Case

Outer Case Depth	305 mm
-------------------------	--------

Outer Case Width	305 mm
-------------------------	--------

Outer Case Height	229 mm
--------------------------	--------

PALLET
INFORMATION

Quantity of Cases Per Pallet Layer	12 Cases	Pallet Height	1.52 MTR
---	----------	----------------------	----------

Quantity of Layers Per Pallet	7 Layers	Pallet Gross Weight	370 kg
--------------------------------------	----------	----------------------------	--------

Quantity of Cases Per Pallet	84 Cases
-------------------------------------	----------

PACKAGING

Inner Component Packaging

Type	Materials	Weight	Recycled Plastic %	Recyclable	Returnable	Composite
Bag	Plastic	22 g	- %			

Outer Case Packaging

Type	Materials	Weight	Recycled Plastic %	Recyclable	Returnable	Composite
Case	Paper/Cardboard	290 g	- %			

Transport Packaging

Type	Materials	Weight	Recycled Plastic %	Recyclable	Returnable	Composite
Other	Plastic	600 g	- %			

OTHER INFORMATION

Manufacturer Comments

BRC Accredited

CONTACT INFORMATION

Address

Capri Foods Ltd
 Unit 21, Worton Hall Industrial Estate
 Worton Road
 Isleworth
 Middlesex
 TW7 6ER
 United Kingdom

Technical Contact

Raju Ramachandran
 Q A Manager
 Raju@caprifoods.co.uk

P: (Phone) 02087582561

P: (Phone) 0208 758 2561

The information on the [Erudus System](#) has been supplied by the manufacturers of the products and, whilst the owners of the Erudus System take steps to ensure the information is regularly updated, they give no warranty and no guarantee that the information is accurate. Product information and ingredients may change, please always read product labels carefully in addition to using the information provided by Erudus.

We do not accept liability for any inaccuracies or incorrect information contained on this site.
 Please visit <http://www.erudus.com/terms-and-conditions> for full terms and conditions.