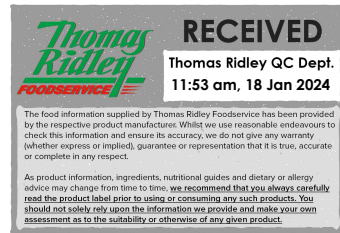


Changed Jan 17, 2024 11:45

Reviewed Jan 17, 2024 11:45

Erudus ID 46145d93c8ca40649597e586c1bfbf7d

Version 2.0



Sliced Turkey Breast 15x500g

Sliced Turkey Breast 500g

PRODUCT DESCRIPTION

Boneless cooked turkey breast

Brand	Kings Fine Cooked Meats
Manufacturer Product Code	TURKPT500
Product Type	Food
Product Category	Chicken & Turkey
Storage Type	Chilled
Erudus ID	46145d93c8ca40649597e586c1bfbf7d
Specification Type	Meat
Inner Component GTIN	5060388580421
Inner Pack GTIN	5060388580421
Outer Case GTIN	05060388580438

INGREDIENTS

Ingredient Declaration

Turkey (100g of Turkey per 100g of finished product), Water, Salt, Pea Starch, Stabilisers (E451, E450), Gelling Agent (Carrageenan E407)

ALLERGENS

Product Contains:

Celery/Celeriac	No	Mustard	No
Cereals Containing Gluten	No	Nuts (Tree)	No
Barley	No	Almond nuts	No
Oats	No	Brazil nuts	No
Rye	No	Cashew nuts	No
Wheat (including Spelt and Khorasan)	No	Hazelnuts	No
Crustacea	No	Macadamia (Queensland) nuts	No
Eggs	No	Pecan nuts	No
Fish	No	Pistachio nuts	No
Lupin	No	Walnuts	No
Milk	No	Peanuts	No
Molluscs	No	Sesame Seeds	No
		Soybeans	No
		Sulphur Dioxide and Sulphites	No

SUPPLEMENTARY INGREDIENT INFORMATION

Palm Oil	No
Hydrogenated Vegetable Oil/Fat	No
GM Protein/DNA	No

ADDITIVES

Product Contains:

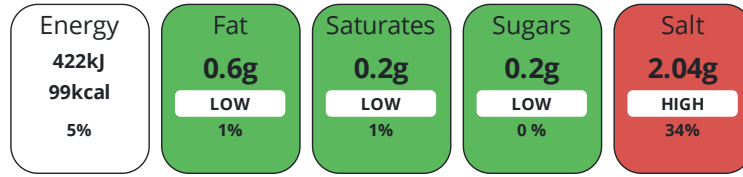
Artificial Antioxidants	No	Artificial Flavourings	No
Artificial Colours	No	Artificial Preservatives	No
Artificial Flavour Enhancers	No	Artificial Sweeteners	No

DIET SUITABILITY

Halal Diet	No	Kosher Diet	No
-------------------	----	--------------------	----

NUTRITIONAL INFORMATION

Each 100g/ml portion contains:



of your reference intake.

Typical values per 100g/ml : Energy 99kcal / 422kj

Nutrient	per 100g	RI per 100g	per 50g serving	RI per 50g serving
Energy (kJ)	422 kJ	5%	211 kJ	3%
Energy (kcal)	99 kcal	5%	49.5 kcal	2%
Fat	0.6 g	1%	0.3 g	0%
of which Saturates	0.2 g	1%	0.1 g	1%
Carbohydrate	1.2 g	0%	0.6 g	0%
of which Sugars	0.2 g	0%	0.1 g	0%
Fibre	< 0.5 g		0.3 g	
Protein	22.3 g	45%	11.2 g	22%
Salt	2.04 g	34%	1 g	17%

Serving Size	50 g
Number of Servings	10 Servings

Source of Nutritional Information	Manufacturers analysis
-----------------------------------	------------------------

SUPPLEMENTARY NUTRITIONAL INFORMATION

HFSS (HIGH IN FAT, SALT AND SUGAR)
HANDLING & STORAGE INFORMATION

HFSS Status	2
-------------	---

Directions For Use
Product is ready to eat. For sliced; remove the product from packaging before consuming. For joints; remove the product from packaging and cut to desired size before consuming.

Storage Instructions
Keep refrigerated at 0-5°C. Use within 3 days of opening.

Storage Instructions After Opening
Keep refrigerated at 0-5°C. Use within 3 days of opening.

Shelf Life from Time of Production	25 Days	Exempt From Shelf Life Labelling	No
Shelf Life From Opening	3 Days		

ACCREDITATIONS/ CERTIFICATIONS/ ASSURANCE SCHEMES



ORIGIN

Product Country of Origin/Place of Provenance: Poland

Additional Origin Details

EU

PRODUCT CHARACTERISTICS

Standards Testing

Do you undertake trend analysis of microbiological results?	Yes	Is shelf life testing undertaken?	Yes
--	-----	--	-----

ORGANOLEPTICS

Appearance	White/tan colour with no pink areas
Aroma	Fresh and savoury
Taste	Savoury and creamy with a hint of salt
Texture	Tender, easy to chew, internal moisture on chewing

HAZARD CONTROLS

Metal Detection	Yes
Case Configuration	
Total Quantity of Inner Components in Outer Case	15 Units
Total Quantity of Inner Packs in Outer Case	15 Units
Is the Outer Case Splittable?	Yes

Inner Pack Configuration	
Is Inner Pack Splittable?	No

CONFIGURATION

PRODUCT WEIGHTS

Inner Component		Inner Pack	
Variable Weight Consumer Item	No	Inner Pack Gross Weight	524 g
Inner Component Weight	500 g	Inner Pack Net Weight	500 g
Net Drained Weight	500 g		
e mark	Yes		

Outer Case	
Outer Case Gross Weight	7.92 kg
Outer Case Net Weight	7.5 kg

PRODUCT DIMENSIONS

Inner Component		Inner Pack	
Inner Component Depth	239 mm	Inner Pack Depth	239 mm
Inner Component Width	166 mm	Inner Pack Width	166 mm
Inner Component Height	37 mm	Inner Pack Height	37 mm

Outer Case	
Outer Case Depth	385 mm
Outer Case Width	320 mm
Outer Case Height	200 mm

PALLET INFORMATION

Quantity of Cases Per Pallet Layer	9 Cases	Pallet Height	1.86 MTR
Quantity of Layers Per Pallet	8 Layers	Pallet Gross Weight	540 kg
Quantity of Cases Per Pallet	72 Cases		

PACKAGING

Inner Pack Packaging							
Type	Materials	Weight	Recycled Plastic %	Recyclable	Returnable	Composite	
Tray	Plastic	24 g	- %	No	No		
Outer Case Packaging							
Type	Materials	Weight	Recycled Plastic %	Recyclable	Returnable	Composite	
Case	Paper/Cardboard	420 g	- %	Yes	No		

Transport Packaging

Type	Materials	Weight	Recycled Plastic %	Recyclable	Returnable	Composite
Pallet	Wood	25000 g	- %	No	Yes	
Pallet Wrap	Plastic	325 g	- %	No	No	

OTHER INFORMATION

Identification/Health Marks

United Kingdom
WG 025

CONTACT INFORMATION

Address

Kings Fine Cooked Meats
69 Queens Street
Wigan
Lancashire
WN3 4HW
United Kingdom

P. (Phone) 01942322398

The information on the [Erudus System](#) has been supplied by the manufacturers of the products and, whilst the owners of the Erudus System take steps to ensure the information is regularly updated, they give no warranty and no guarantee that the information is accurate. Product information and ingredients may change, please always read product labels carefully in addition to using the information provided by Erudus.

We do not accept liability for any inaccuracies or incorrect information contained on this site.
Please visit <http://www.erudus.com/terms-and-conditions> for full terms and conditions.