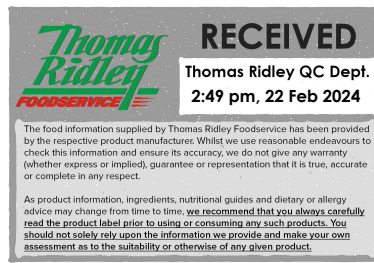


Changed Feb 21, 2024 12:54

Reviewed Feb 21, 2024 12:54

Erudus ID 3527a39c07d54d5d9f50ab1e03df7ada

Version 2.0



82003

# HNZ Tomato Ketchup Sachet (200) 10ml

Tomato Ketchup 200x10ml

## PRODUCT DESCRIPTION

Heinz tomato ketchup sachets

Brand	H.J. Heinz
Manufacturer Product Code	76003388
Product Type	Food
Product Category	Condiments
Storage Type	Ambient
Erudus ID	3527a39c07d54d5d9f50ab1e03df7ada
Specification Type	Generic
Inner Component GTIN	5000157104533
Outer Case GTIN	5000157104533



## INGREDIENTS

### Ingredient Declaration

Tomatoes (148g per 100g Tomato Ketchup), Vinegar, Sugar, Salt, Spice and Herb Extracts (contain CELERY), Spice

## ALLERGENS

Product Contains:

<b>Celery/Celeriac</b>	Yes	<b>Mustard</b>	No
<b>Cereals Containing Gluten</b>	No	<b>Nuts (Tree)</b>	No
<b>Barley</b>	No	<b>Almond nuts</b>	No
<b>Oats</b>	No	<b>Brazil nuts</b>	No
<b>Rye</b>	No	<b>Cashew nuts</b>	No
<b>Wheat (including Spelt and Khorasan)</b>	No	<b>Hazelnuts</b>	No
<b>Crustacea</b>	No	<b>Macadamia (Queensland) nuts</b>	No
<b>Eggs</b>	No	<b>Pecan nuts</b>	No
<b>Fish</b>	No	<b>Pistachio nuts</b>	No
<b>Lupin</b>	No	<b>Walnuts</b>	No
<b>Milk</b>	No	<b>Peanuts</b>	No
<b>Molluscs</b>	No	<b>Sesame Seeds</b>	No
		<b>Soybeans</b>	No
		<b>Sulphur Dioxide and Sulphites</b>	No

## SUPPLEMENTARY INGREDIENT INFORMATION

<b>Palm Oil</b>	No	<b>Alcoholic Strength %Vol (ABV)</b>	0 % Vol
<b>Hydrogenated Vegetable Oil/Fat</b>	No		
<b>GM Protein/DNA</b>	No		

## ADDITIVES

Product Contains:

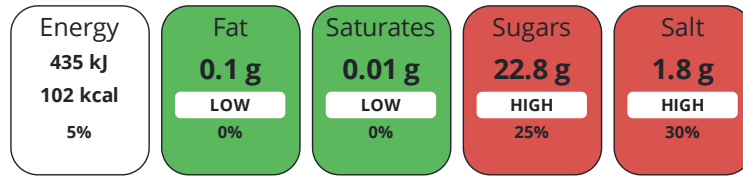
<b>Artificial Antioxidants</b>	No	<b>Artificial Flavourings</b>	No
<b>Artificial Colours</b>	No	<b>Artificial Preservatives</b>	No
<b>Artificial Flavour Enhancers</b>	No	<b>Artificial Sweeteners</b>	No

DIET  
SUITABILITY

<b>Vegan Diet</b>	Suitable for	<b>Vegetarian Diet</b>	Suitable for
<b>Halal Diet</b>	No	<b>Kosher Diet</b>	No

NUTRITIONAL  
INFORMATION

Each 100g/ml portion contains:



of your reference intake.

Typical values per 100g/ml : Energy 102kcal / 435kJ

Nutrient	per 100g	RI per 100g	per 10g serving	RI per 10g serving
<b>Energy (kJ)</b>	435 kJ	5%	43.5 kJ	1%
<b>Energy (kcal)</b>	102 kcal	5%	10.2 kcal	1%
<b>Fat</b>	0.1 g	0%	-	
of which Saturates	0.01 g	0%	-	
<b>Carbohydrate</b>	23.2 g	9%	2.3 g	1%
of which Sugars	22.8 g	25%	2.3 g	3%
<b>Protein</b>	1.2 g	2%	0.1 g	0%
<b>Salt</b>	1.8 g	30%	0.2 g	3%
<b>Sodium</b>	720 mg		72 mg	

**Serving Size** 10 g

SUPPLEMENTARY  
NUTRITIONAL  
INFORMATION

HANDLING &  
STORAGE  
INFORMATION

**Directions For Use**

Ready to use sauce

**Storage Instructions**

Ambient storage. Immediate use only.

<b>Shelf Life from Time of Production</b>	270 Days	<b>Exempt From Shelf Life Labelling</b>	No
---	----------	---	----

ACCREDITATIONS/  
CERTIFICATIONS/  
ASSURANCE  
SCHEMES



ORIGIN

**Product Country of Origin/Place of** United Kingdom

**Provenance**

**Additional Origin Details**

n/a

PRODUCT  
CHARACTERISTICS

Standards Testing

<b>Do you undertake trend analysis of microbiological results?</b>	No	<b>Is shelf life testing undertaken?</b>	No
--	----	--	----

CONFIGURATION

Case Configuration

Inner Pack Configuration

**Total Quantity of Inner Components in** 200 Units

**Outer Case**

**Is the Outer Case Splittable?** No

PRODUCT WEIGHTS

Inner Component	
<b>Variable Weight Consumer Item</b>	No
<b>Inner Component Volume</b>	10 ml
Outer Case	
<b>Outer Case Gross Weight</b>	2.42 kg
<b>Outer Case Net Weight</b>	2.2 kg

PRODUCT DIMENSIONS

Inner Component	
<b>Inner Component Depth</b>	7 mm
<b>Inner Component Width</b>	39 mm
<b>Inner Component Height</b>	87 mm
Outer Case	
<b>Outer Case Depth</b>	297 mm
<b>Outer Case Width</b>	197 mm
<b>Outer Case Height</b>	116 mm

PALLET INFORMATION

<b>Quantity of Cases Per Pallet Layer</b>	20 Cases	<b>Pallet Height</b>	1.3 MTR
<b>Quantity of Layers Per Pallet</b>	10 Layers	<b>Pallet Gross Weight</b>	511.6 kg
<b>Quantity of Cases Per Pallet</b>	200 Cases		

PACKAGING

Inner Component Packaging						
Type	Materials	Weight	Recycled Plastic %	Recyclable	Returnable	Composite
Sachet	Plastic	0.38 g	- %			
Outer Case Packaging						
Type	Materials	Weight	Recycled Plastic %	Recyclable	Returnable	Composite
Case	Plastic	76 g	- %			
Case	Paper/Cardboard	147 g	- %			
Case	Aluminium	0.1 g	- %			

OTHER INFORMATION CONTACT INFORMATION

Address  
H.J. Heinz  
The Shard  
32 London Bridge Street  
London  
SE1 9SG  
England

P: (Phone) 02037 650500

The information on the [Erudus System](#) has been supplied by the manufacturers of the products and, whilst the owners of the Erudus System take steps to ensure the information is regularly updated, they give no warranty and no guarantee that the information is accurate. Product information and ingredients may change, please always read product labels carefully in addition to using the information provided by Erudus.

We do not accept liability for any inaccuracies or incorrect information contained on this site. Please visit <http://www.erudus.com/terms-and-conditions> for full terms and conditions.