


Changed Feb 28, 2024 12:17

Reviewed Feb 28, 2024 12:17

Erudus ID e52cd9f5e233438cbbd2b8af6a1733fc

Version 2.0



RECEIVED
Thomas Ridley QC Dept.
8:13 am, 29 Feb 2024

The food information supplied by Thomas Ridley Foodservice has been provided by the respective product manufacturer. Whilst we use reasonable endeavours to check this information and ensure its accuracy, we do not give any warranty (whether express or implied), guarantee or representation that it is true, accurate or complete in any respect.

As product information, ingredients, nutritional guides and dietary or allergy advice may change from time to time, we recommend that you always carefully read the product label prior to using or consuming any such products. You should not solely rely upon the information we provide and make your own assessment as to the suitability or otherwise of any given product.



Lea & Perrins Worcester Sauce (6) 568ml

Worcester Sauce 6x568ml

PRODUCT DESCRIPTION

Worcester sauce

Brand	H.J. Heinz
Manufacturer Product Code	71169303
Product Type	Food
Product Category	Condiments
Storage Type	Ambient
Erudus ID	e52cd9f5e233438cbbd2b8af6a1733fc
Specification Type	Generic



Inner Component GTIN	5000111018111
Outer Case GTIN	05000111590624



INGREDIENTS

Ingredient Declaration

Malt Vinegar (from BARLEY), Spirit Vinegar, Molasses, Sugar, Salt, Anchovies, (FISH) Tamarind Extract, Onions, Garlic, Spices, Flavourings

ALLERGENS

Product Contains:

Celery/Celeriac	No	Mustard	No
Cereals Containing Gluten	Yes	Nuts (Tree)	No
Barley	Yes	Almond nuts	No
Oats	No	Brazil nuts	No
Rye	No	Cashew nuts	No
Wheat (including Spelt and Khorasan)	No	Hazelnuts	No
Crustacea	No	Macadamia (Queensland) nuts	No
Eggs	No	Pecan nuts	No
Fish	Yes	Pistachio nuts	No
Lupin	No	Walnuts	No
Milk	No	Peanuts	No
Molluscs	No	Sesame Seeds	No
		Soybeans	No
		Sulphur Dioxide and Sulphites	No

SUPPLEMENTARY INGREDIENT INFORMATION

Palm Oil	No
Hydrogenated Vegetable Oil/Fat	No
GM Protein/DNA	No

ADDITIVES

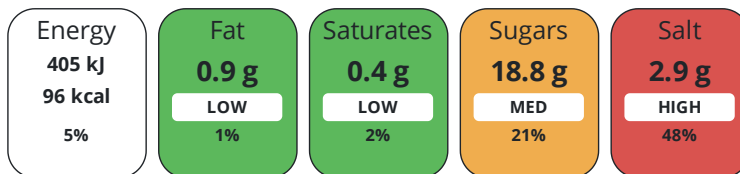
Product Contains:

Artificial Antioxidants	No	Artificial Flavourings	No
Artificial Colours	Yes	Artificial Preservatives	No
Artificial Flavour Enhancers	No	Artificial Sweeteners	No
Vegan Diet	No	Vegetarian Diet	No
Halal Diet	Suitable for	Kosher Diet	Suitable for

DIET SUITABILITY

NUTRITIONAL INFORMATION

Each 100g/ml portion contains:



of your reference intake.

Typical values per 100g/ml : Energy 96kcal / 405kj

Nutrient	per 100g	RI per 100g
Energy (kJ)	405 kJ	5%
Energy (kcal)	96 kcal	5%
Fat	0.9 g	1%
of which Saturates	0.4 g	2%
Carbohydrate	21 g	8%
of which Sugars	18.8 g	21%
Protein	0.8 g	2%
Salt	2.9 g	48%

SUPPLEMENTARY NUTRITIONAL INFORMATION

HANDLING & STORAGE INFORMATION

Directions For Use

Ready to use sauce

Storage Instructions

Store at ambient temperature to BBE date

Shelf Life from Time of Production	547 Days	Exempt From Shelf Life Labelling	No
---	----------	---	----

ACCREDITATIONS/ CERTIFICATIONS/ ASSURANCE SCHEMES



Other Accreditation

n/a

ORIGIN

Product Country of Origin/Place of United Kingdom

Provenance

Additional Origin Details

n/a

PRODUCT CHARACTERISTICS

Standards Testing

CONFIGURATION	Case Configuration		Inner Pack Configuration				
	Total Quantity of Inner Components in Outer Case	6 Units					
	Is the Outer Case Splittable?	No					
PRODUCT WEIGHTS	Inner Component						
	Variable Weight Consumer Item	No					
	Inner Component Volume	568 ml					
	Outer Case						
	Outer Case Gross Weight	6.5 kg					
	Outer Case Net Weight	3.8 kg					
PRODUCT DIMENSIONS	Inner Component						
	Inner Component Depth	70 mm					
	Inner Component Width	70 mm					
	Inner Component Height	268 mm					
	Outer Case						
	Outer Case Depth	214 mm					
PALLET INFORMATION	Outer Case Width	146 mm					
	Outer Case Height	269 mm					
	Quantity of Cases Per Pallet Layer	36 Cases	Pallet Height	1.1 MTR			
	Quantity of Layers Per Pallet	4 Layers					
	Quantity of Cases Per Pallet	144 Cases					
	PACKAGING	Inner Component Packaging					
Type		Materials	Weight	Recycled Plastic %	Recyclable	Returnable	Composite
Bottle		Plastic	2.7 g	- %			
Bottle		Paper/Cardboard	2.4 g	- %			
Bottle		Glass	405 g	- %			
Outer Case Packaging							
Type		Materials	Weight	Recycled Plastic %	Recyclable	Returnable	Composite
Case		Plastic	42 g	- %			
Case		Paper/Cardboard	0.5 g	- %			
OTHER INFORMATION		Manufacturer Comments					
	n/a						
CONTACT INFORMATION	Address						
	H.J. Heinz						
	The Shard						
	32 London Bridge Street						
	London						
	SE1 9SG						
England							
P. (Phone) 02037 650500							

The information on the [Erudus System](#) has been supplied by the manufacturers of the products and, whilst the owners of the Erudus System take steps to ensure the information is regularly updated, they give no warranty and no guarantee that the information is accurate. Product information and ingredients may change, please always read product labels carefully in addition to using the information provided by Erudus.

We do not accept liability for any inaccuracies or incorrect information contained on this site.
Please visit <http://www.erudus.com/terms-and-conditions> for full terms and conditions.