

**RECEIVED**  
Thomas Ridley QC Dept.  
8:33 am, 10 Jul 2023

The food information supplied by Thomas Ridley Foodservice has been provided by the respective product manufacturer. Whilst we use reasonable endeavours to check this information and ensure its accuracy, we do not give any warranty (whether express or implied), guarantee or representation that it is true, accurate or complete in any respect.

As product information, ingredients, nutritional guides and dietary or allergy advice may change from time to time, we recommend that you always carefully read the product label prior to using or consuming any such products. You should not solely rely upon the information we provide and make your own assessment as to the suitability or otherwise of any given product.

## Cadbury Crunchie Chocolate Bar 40g



**EAN**  
5000201468611

**Target market(s)**  
GB, IE

# Components

## Ingredients

Sugar  
Glucose Syrup  
Cocoa Butter  
Cocoa Mass  
Skimmed **Milk** Powder  
Whey Permeate Powder (from **Milk**)  
Palm Oil

## Milk Fat

Emulsifier (E442)  
Flavourings  
Coconut Oil

Milk Chocolate: Milk Solids 14 % minimum

Contains Vegetable Fats in addition to Cocoa Butter

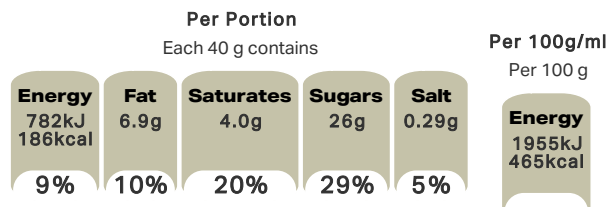
## Nutrition

	Per 100 g:	Per Bar (40 g):
Energy	1955 kJ (465 kcal)	782 kJ (186 kcal)
Fat	17 g	6.9 g
of which Saturates	10 g	4.0 g
Carbohydrate	74 g	29 g
of which Sugars	65 g	26 g
Fibre	1.3 g	0.5 g
Protein	3.1 g	1.2 g
Salt	0.72 g	0.29 g

## Calculated Nutrition

	per 100g	Per Bar (40 g):
Energy (kJ)	1955	782
Energy (kcal)	465	186
Fat (g)	17	6.9
of which saturates (g)	10	4
Carbohydrate (g)	74	29
of which sugars (g)	65	26
Fibre (g)	1.3	0.5
Protein (g)	3.1	1.2
Salt (g)	0.72	0.29

## Front of Pack Nutrition



% reference intake of an average adult (8400 kJ / 2000 kcal)

## Reference Intake Statement

Reference Intake Statement - % reference intake of an average adult (8400 kJ / 2000 kcal)

## Product Description

### Brand

Cadbury

### Features

Suitable for vegetarians

### Standardised Brand

Brand - Cadbury

### Regulated Product Name

Milk chocolate with golden honeycombed centre (38 %).

## Marketing

### Company Name

Mondelez UK / Mondelez Ireland

### Company Address

Mondelez UK,  
PO Box 7008,  
Birmingham,  
B30 2PT.

Mondelez Ireland,  
Malahide Road,  
Coolock,  
Dublin 5.

### Third Party Logos

- Green Dot

### Manufacturer Marketing

By Appointment to H.M. The Queen Cocoa and Chocolate Manufacturers Cadbury UK Ltd., Bournville.

### Other Information

Made under licence from Cadbury UK Ltd.

### Further Description

BeTreatwise.net

Cocoa Life  
Partnering with Fairtrade Foundation  
www.cocoalife.org

## Health & Lifestyle

### Lifestyle

- Suitable for Vegetarians

### Allergy Advice

Milk - Contains

## Storage & Usage

### Storage Type

#### Type

Ambient

### Storage

Store in a dry place. Do not refrigerate.

## Brandbank Captured Pack Data

### Pack Size

40g e

### Numeric Size

Numeric Size - 40

### Pack Type

Type - Wrap

### Usage Count

Number of uses - Servings

1

### Usage Other Text

1x bar = 1 Portion. 1 portion per pack

## Customer Services

### Manufacturers Address

Mondelez UK,  
PO Box 7008,  
Birmingham,  
B30 2PT.

Mondelez Ireland,  
Malahide Road,  
Coolock,  
Dublin 5.

### Return To

We are passionate about our great quality Cadbury products. Not completely satisfied? Please contact us:

Freephone 0800 818181 (UK only)

Mondelez UK,  
PO Box 7008,  
Birmingham,  
B30 2PT.

Mondelez Ireland,  
Freephone 1-800 678708  
Malahide Road,  
Coolock,  
Dublin 5.  
[www.cadbury.co.uk](http://www.cadbury.co.uk)

### Telephone Helpline

0800 818181 (UK)  
1-800 678708

### Web Address

[www.cadbury.co.uk](http://www.cadbury.co.uk)

