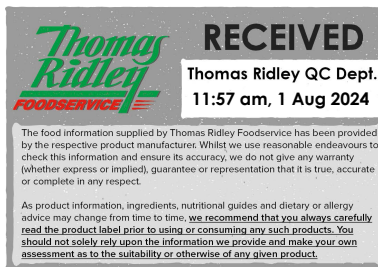


Changed Aug 01, 2024 10:55

Reviewed Aug 01, 2024 10:55

Erudus ID d6b96ce06126426495e9b7ec3774a263

Version 3.1



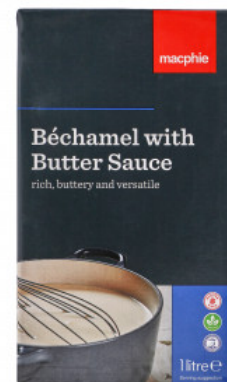
# Bechamel with Butter 12 x 1L

Bechamel With Butter 12x1034g

## PRODUCT DESCRIPTION

A rich heat treated white sauce made with a blend of vegetable stock and milk, enriched with butter (5%).

Brand	Macphie Ltd
Manufacturer Product Code	10000212
Product Type	Food
Product Category	Sauces & Dips
Storage Type	Ambient
Erudus ID	d6b96ce06126426495e9b7ec3774a263
Specification Type	Generic



Inner Component GTIN	5017506701145
Outer Case GTIN	05017506451149



## INGREDIENTS

### Ingredient Declaration

Reconstituted Skimmed MILK, Reconstituted Vegetable Stock [Water, Salt, Yeast Extract, Maltodextrin, Sugar, Dried Onion, Dried Carrot, Sunflower Oil, Dried Lovage], Vegetable Oil (Palm), Butter (5%) (MILK), Modified Starch, Salt, Emulsifier (SOYA Lecithin)

## ALLERGENS

Product Contains:

Celery/Celeriac	No	Mustard	No
Cereals Containing Gluten	No	Nuts (Tree)	No
Barley	No	Almond nuts	No
Oats	No	Brazil nuts	No
Rye	No	Cashew nuts	No
Wheat (including Spelt and Khorasan)	No	Hazelnuts	No
Crustacea	No	Macadamia (Queensland) nuts	No
Eggs	No	Pecan nuts	No
Fish	No	Pistachio nuts	No
Lupin	No	Walnuts	No
Milk	Yes	Peanuts	No
Molluscs	No	Sesame Seeds	No
		Soybeans	Yes
		Sulphur Dioxide and Sulphites	No

### Additional Allergen Information

Contains: SOYA and MILK

FREE FROM CLAIMS	Gluten-Free	Yes
------------------	-------------	-----

SUPPLEMENTARY  
INGREDIENT  
INFORMATION

<b>Palm Oil</b>	Yes
<b>Hydrogenated Vegetable Oil/Fat</b>	No
<b>GM Protein/DNA</b>	No

ADDITIVES

*Product Contains:*

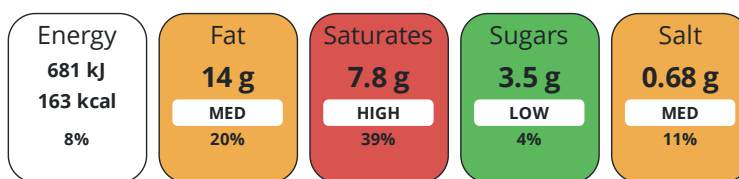
<b>Artificial Antioxidants</b>	No	<b>Artificial Flavourings</b>	No
<b>Artificial Colours</b>	No	<b>Artificial Preservatives</b>	No
<b>Artificial Flavour Enhancers</b>	No	<b>Artificial Sweeteners</b>	No

DIET  
SUITABILITY

<b>Vegan Diet</b>	No	<b>Vegetarian Diet</b>	Suitable for
<b>Halal Diet</b>	Certified	<b>Kosher Diet</b>	No

NUTRITIONAL  
INFORMATION

Each 100g/ml portion contains:



of your reference intake.

Typical values per 100g/ml : Energy 163kcal / 681kj

Nutrient	per 100ml	RI per 100ml
<b>Energy (kJ)</b>	681 kJ	8%
<b>Energy (kcal)</b>	163 kcal	8%
<b>Fat</b>	14 g	20%
<b>of which Saturates</b>	7.8 g	39%
<b>Carbohydrate</b>	7.6 g	3%
<b>of which Sugars</b>	3.5 g	4%
<b>Fibre</b>	0.01 g	
<b>Protein</b>	2.4 g	5%
<b>Salt</b>	0.68 g	11%

SUPPLEMENTARY  
NUTRITIONAL  
INFORMATION

HANDLING &  
STORAGE  
INFORMATION

**Directions For Use**

Please see technical information sheet. Available at Macphie.com.

**Storage Instructions**

Unopened, store in cool, dry hygienic environment (<20oC). Opened, store in hygienic chill. Shelf life opened: 7 days.

**Shelf Life from Time of Production** 365 Days

ACCREDITATIONS/  
CERTIFICATIONS/  
ASSURANCE  
SCHEMES  
ORIGIN

<b>BRCGS Certified</b>	<b>B Corp Certification</b>
<b>Roundtable of Sustainable Palm Oil (RSPO)</b>	<b>Other Accreditation</b>

**Product Country of Origin/Place of** United Kingdom

**Provenance**

**Additional Origin Details**

Scotland

PRODUCT  
CHARACTERISTICS

Standards Testing

**Is shelf life testing undertaken?** Yes

CONFIGURATION	Case Configuration		Inner Pack Configuration				
	<b>Total Quantity of Inner Components in Outer Case</b>	12 Units					
	<b>Is the Outer Case Splittable?</b>	No					
PRODUCT WEIGHTS	Inner Component						
	<b>Variable Weight Consumer Item</b>	No					
	<b>Inner Component Weight</b>	1034 g					
	Outer Case						
	<b>Outer Case Gross Weight</b>	12.83 kg					
	<b>Outer Case Net Weight</b>	12.41 kg					
PRODUCT DIMENSIONS	Inner Component						
	<b>Inner Component Depth</b>	94 mm					
	<b>Inner Component Width</b>	60 mm					
	<b>Inner Component Height</b>	165 mm					
	Outer Case						
	<b>Outer Case Depth</b>	388 mm					
	<b>Outer Case Width</b>	199 mm					
	<b>Outer Case Height</b>	170 mm					
	PALLET INFORMATION	<b>Quantity of Cases Per Pallet Layer</b>	15 Cases	<b>Pallet Height</b>	0.97 MTR		
<b>Quantity of Layers Per Pallet</b>		5 Layers	<b>Pallet Gross Weight</b>	988.99 kg			
<b>Quantity of Cases Per Pallet</b>		75 Cases					
PACKAGING	Inner Component Packaging						
	<b>Type</b>	<b>Materials</b>	<b>Weight</b>	<b>Recycled Plastic %</b>	<b>Recyclable</b>	<b>Returnable</b>	<b>Composite</b>
	Tetra Pack	Plastic	5 g	- %			
	Tetra Pack	Paper/Cardboard	22 g	- %			
	Tetra Pack	Aluminium	11 g	- %			
	Outer Case Packaging						
	<b>Type</b>	<b>Materials</b>	<b>Weight</b>	<b>Recycled Plastic %</b>	<b>Recyclable</b>	<b>Returnable</b>	<b>Composite</b>
	Case	Plastic	16 g	- %			
	Case	Paper/Cardboard	75 g	- %			
	Transport Packaging						
	<b>Type</b>	<b>Materials</b>	<b>Weight</b>	<b>Recycled Plastic %</b>	<b>Recyclable</b>	<b>Returnable</b>	<b>Composite</b>
	Other	Plastic	514 g	- %			
	Other	Paper/Cardboard	430 g	- %			
	Other	Wood	30000 g	- %			
	OTHER INFORMATION	<b>Commodity Code</b>	2103909089				
		<b>Manufacturer Comments</b>					

For microbiological & analytical data please be advised this product is commercially sterile and free from all viable micro-organisms until opened.

CONTACT  
INFORMATION

Address

Macphie Ltd  
Glenbervie  
Stonehaven  
AB39 3YG  
Scotland

P: (Phone) 01569 740641

The information on the [Erudus System](#) has been supplied by the manufacturers of the products and, whilst the owners of the Erudus System take steps to ensure the information is regularly updated, they give no warranty and no guarantee that the information is accurate. Product information and ingredients may change, please always read product labels carefully in addition to using the information provided by Erudus.

We do not accept liability for any inaccuracies or incorrect information contained on this site.  
Please visit <http://www.erudus.com/terms-and-conditions> for full terms and conditions.