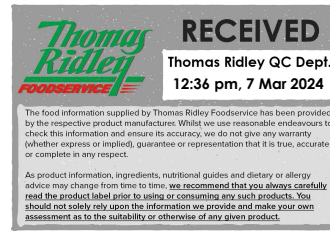


Changed Mar 06, 2024 15:10

Reviewed Mar 06, 2024 15:10

Erudus ID 6a7dc9c23d6841bcb295523821bc75fd

Version 3.0



88177

Wall's Viennetta Vanilla Ice Cream Dessert 650ml x 6

Wall's Viennetta Vanilla Ice Cream Dessert 650ml X 6 1x650ml

PRODUCT DESCRIPTION

Smooth vanilla ice cream between crisp chocolate flavour layers (11%)

Brand	Unilever UK Limited
Manufacturer Product Code	67421523
Product Type	Food
Product Category	Ice Cream
Storage Type	Frozen
Erudus ID	6a7dc9c23d6841bcb295523821bc75fd
Specification Type	Dairy



650 ml

Inner Component GTIN	8000920200025
Outer Case GTIN	8000920250020



INGREDIENTS

Ingredient Declaration

Ingredients: Reconstituted skimmed MILK, coconut fat, glucose-fructose syrup, sugar, water, glucose syrup, fat-reduced cocoa powder, whey solids (MILK), emulsifiers (mono- and diglycerides of fatty acids, ammonium phosphatides), stabilisers (locust bean gum, guar gum, carrageenan), natural flavouring.

ALLERGENS

Product Contains:

Celery/Celeriac	No	Mustard	No
Cereals Containing Gluten	No	Nuts (Tree)	May Contain
Barley	No	Almond nuts	May Contain
Oats	No	Brazil nuts	No
Rye	No	Cashew nuts	No
Wheat (including Spelt and Khorasan)	No	Hazelnuts	May Contain
Crustacea	No	Macadamia (Queensland) nuts	No
Eggs	No	Pecan nuts	No
Fish	No	Pistachio nuts	No
Lupin	No	Walnuts	May Contain
Milk	Yes	Peanuts	No
Molluscs	No	Sesame Seeds	No
		Soybeans	May Contain
		Sulphur Dioxide and Sulphites	No

Risk Source:

Additional Allergen Information

May contain: almond, hazelnut, walnut and soy.

**SUPPLEMENTARY
INGREDIENT
INFORMATION**

Palm Oil	No
Hydrogenated Vegetable Oil/Fat	No
GM Protein/DNA	No

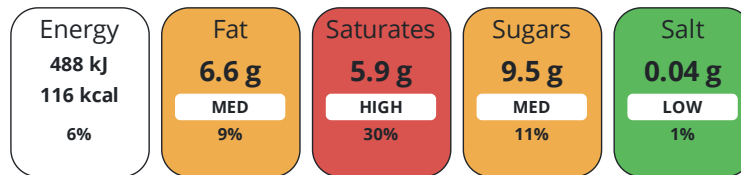
ADDITIVES

Product Contains:

Artificial Antioxidants	No	Artificial Flavourings	No
Artificial Colours	No	Artificial Preservatives	No
Artificial Flavour Enhancers	No	Artificial Sweeteners	No
Vegetarian Diet	No	Halal Diet	No
Kosher Diet	No		

**DIET
SUITABILITY**
**NUTRITIONAL
INFORMATION**

Each 100g/ml portion contains:



of your reference intake.

Typical values per 100g/ml : Energy 116kcal / 488kj

Nutrient	per 100g	RI per 100g	per 100g serving	RI per 100g serving
Energy (kJ)	488 kJ	6%	488 kJ	6%
Energy (kcal)	116 kcal	6%	116 kcal	6%
Fat	6.6 g	9%	6.6 g	9%
of which Saturates	5.9 g	30%	5.9 g	30%
Carbohydrate	13 g	5%	13 g	5%
of which Sugars	9.5 g	11%	9.5 g	11%
Protein	1 g	2%	1 g	2%
Salt	0.04 g	1%	-	
Serving Size	100 g			

**SUPPLEMENTARY
NUTRITIONAL
INFORMATION**
**HANDLING &
STORAGE
INFORMATION**
Directions For Use

Keep frozen-Store at -18°C Portion = x1 slice 100ml/49g Pack contains: ~ 7 portions

Storage Instructions

Store at -18°C

Shelf Life from Time of Production	720 Days	Exempt From Shelf Life Labelling	No
---	----------	---	----

**ACCREDITATIONS/
CERTIFICATIONS/
ASSURANCE
SCHEMES**

ORIGIN

Product Country of Origin/Place of Provenance	United Kingdom
--	----------------

PRODUCT CHARACTERISTICS	Standards Testing							
	Do you undertake trend analysis of microbiological results?	No		Is shelf life testing undertaken?	No			
CONFIGURATION	Case Configuration			Inner Pack Configuration				
	Total Quantity of Inner Components in Outer Case	1 Units						
PRODUCT WEIGHTS	Inner Component							
	Variable Weight Consumer Item	No						
	Inner Component Volume	650 ml						
	Outer Case							
	Outer Case Gross Weight	2.33 kg						
	Outer Case Net Weight	1.92 kg						
PRODUCT DIMENSIONS	Inner Component							
	Inner Component Depth	194 mm						
	Inner Component Width	65 mm						
	Inner Component Height	93 mm						
	Outer Case							
	Outer Case Depth	285 mm						
	Outer Case Width	196 mm						
	Outer Case Height	132 mm						
	PALLET INFORMATION	Quantity of Cases Per Pallet Layer	20 Cases		Pallet Height	1.61 MTR		
		Quantity of Layers Per Pallet	11 Layers		Pallet Gross Weight	540.07 kg		
Quantity of Cases Per Pallet		220 Cases						
PACKAGING	Inner Component Packaging							
	Type	Materials	Weight	Recycled Plastic %	Recyclable	Returnable	Composite	
	Carton	Plastic	5.4 g	- %				
	Carton	Paper/Cardboard	39 g	- %				
OTHER INFORMATION CONTACT INFORMATION	Address			Technical Contact				
	Unilever UK Limited			Theresa Crayston				
	Lever House			R&D Assistant Deploy Manager UFS				
	3 St James Road			Theresa.Crayston@unilever.com				
	Kingston Upon Thames							
	KT1 2BA			<u>P. (Phone)</u> 07825008860				
	England							
	<u>P. (Phone)</u> 020 8547 8989							
	Complaints Contact			Commercial Contact				
	via the Careline - details on pack			Iwan Phillips				
<u>P. (Phone)</u> 0800 783 3728			Route to Market, Away From Home					
			Iwan.Phillips@unilever.com					
			<u>P. (Phone)</u> +44 7795 645460					

The information on the [Erudus System](#) has been supplied by the manufacturers of the products and, whilst the owners of the Erudus System take steps to ensure the information is regularly updated, they give no warranty and no guarantee that the information is accurate. Product information and ingredients may change, please always read product labels carefully in addition to using the information provided by Erudus.

We do not accept liability for any inaccuracies or incorrect information contained on this site.
Please visit <http://www.erudus.com/terms-and-conditions> for full terms and conditions.