

Changed Mar 19, 2024 15:04

Reviewed Mar 19, 2024 15:04

Erudus ID 4968668729024736abc92727c9c6033e

Version 2.0

RECEIVED

Thomas Ridley QC Dept.
4:22 pm, 20 Mar 2024

Thomas Ridley
FOODSERVICE

The food information supplied by Thomas Ridley Foodservice has been provided by the respective product manufacturer. Whilst we use reasonable endeavours to check this information and ensure its accuracy, we do not give any warranty (whether express or implied) guarantee or representation that it is true, accurate or complete in any respect.

As product information, ingredients, nutritional guides and dietary or allergy advice may change from time to time, we recommend that you always carefully read the product label prior to using or consuming any such products. You should not solely rely upon the information we provide and make your own assessment as to the suitability or otherwise of any given product.



91011

GLUTEN FREE CHOCOLATE BROWNIE TRAYBAKE (1 x 15ptn)

Gluten Free Chocolate Brownie 1x941g

PRODUCT DESCRIPTION

An indulgent smooth fudge brownie. Cut into 15 squares

Brand	The Handmade Cake Co.
Manufacturer Product Code	075520
Product Type	Food
Product Category	Cakes and Tarts
Storage Type	Frozen
Erudus ID	4968668729024736abc92727c9c6033e
Specification Type	Bakery Products

Outer Case GTIN 5060044075520



INGREDIENTS

Ingredient Declaration

Dark Chocolate (26%) [Cocoa Mass, Sugar, Cocoa Butter, Emulsifier (Lecithins **(SOYA)**), Natural Vanilla Flavouring], Sugar, Pasteurised Free Range **EGG**, Salted Butter [Butter (**MILK**), Salt], Gluten Free Flour [Rice, Potato, Tapioca, Maize, Buckwheat], Fat Reduced Cocoa Powder (3.6%), Baking Powder [Raising Agents (E575, E500(ii), E336(i)), Maize Starch].

ALLERGENS

Product Contains:

Celery/Celeriac	No	Mustard	No
Cereals Containing Gluten	No	Nuts (Tree)	May Contain
Barley	No	Almond nuts	May Contain
Oats	No	Brazil nuts	May Contain
Rye	No	Cashew nuts	May Contain
Wheat (including Spelt and Khorasan)	No	Hazelnuts	May Contain
Crustacea	No	Macadamia (Queensland) nuts	May Contain
Eggs	Yes	Pecan nuts	May Contain
Fish	No	Pistachio nuts	May Contain
Lupin	No	Walnuts	May Contain
Milk	Yes	Peanuts	No
Molluscs	No	Sesame Seeds	No
		Soybeans	Yes
		Sulphur Dioxide and Sulphites	No

Risk Source:

Additional Allergen Information

For allergens see ingredients in BOLD. This product may contain traces of nuts as it has been made in a bakery that uses nut ingredients.

SUPPLEMENTARY
INGREDIENT
INFORMATION

Palm Oil	No
Hydrogenated Vegetable Oil/Fat	No
GM Protein/DNA	No

ADDITIVES

Product Contains:

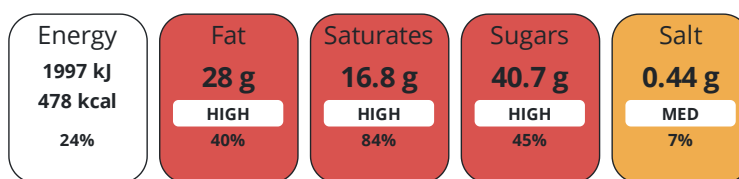
Artificial Antioxidants	No	Artificial Flavourings	No
Artificial Colours	No	Artificial Preservatives	No
Artificial Flavour Enhancers	No	Artificial Sweeteners	No

DIET
SUITABILITY

Vegan Diet	No	Vegetarian Diet	Suitable for
Halal Diet	No	Kosher Diet	No

NUTRITIONAL
INFORMATION

Each 100g/ml portion contains:



of your reference intake.

Typical values per 100g/ml : Energy 478kcal / 1997kj

Nutrient	per 100g	RI per 100g	per 63g serving	RI per 63g serving
Energy (kJ)	1997 kJ	24%	1258.1 kJ	15%
Energy (kcal)	478 kcal	24%	301.1 kcal	15%
Fat	28 g	40%	17.6 g	25%
of which Saturates	16.8 g	84%	10.6 g	53%
Carbohydrate	49.1 g	19%	30.9 g	12%
of which Sugars	40.7 g	45%	25.6 g	28%
Fibre	3.8 g		2.4 g	
Protein	5.3 g	11%	3.3 g	7%
Salt	0.44 g	7%	0.3 g	5%

Serving Size 63 g

SUPPLEMENTARY
NUTRITIONAL
INFORMATION

HFSS (HIGH IN
FAT, SALT AND
SUGAR)

HFSS Status Yes

HANDLING &
STORAGE
INFORMATION

Directions For Use

Defrost at room temperature, in the plastic wrapper, for 2 hours. Please re-cut around the portions before removing from the tray. Once defrosted store in a cool place, in an airtight container. Do not refreeze once defrosted. Consume within 5 days.

Storage Instructions

Keep Frozen. Store at -18 °C.

Shelf Life from Time of Production 365 Days

Exempt From Shelf Life Labelling No

ACCREDITATIONS/
CERTIFICATIONS/
ASSURANCE
SCHEMES

BRCGS Certified

Other Accreditation

ORIGIN	Product Country of Origin/Place of Provenance	United Kingdom					
	Additional Origin Details	-					
PRODUCT CHARACTERISTICS	Standards Testing						
	Do you undertake trend analysis of microbiological results?	Yes	Is shelf life testing undertaken?		Yes		
	Microbiological Standards						
	Organism	Description	Frequency	Target	Maximum	Sample (g or ml)	
	Enterobacteriaceae (cfu/g or ml)		Annually	<100	10000	1	
Staphylococcus Aureus (cfu/g or ml)		Annually	<20	100	1		
Salmonella (cfu/g or ml)	Detected / Not detected per 25g	Annually	=0	0	25		
	Physical Standards						
	Test	Description	Frequency	Target	Range	Sample (g or ml)	
	Dimensions Height (mm)	3 trays per batch	Every Batch	>17	17 to 35	940	
	Weight (g)	3 trays per batch	Every Batch	>940	940 to 1100	940	
CONFIGURATION	Case Configuration	Inner Pack Configuration					
	Total Quantity of Inner Components in Outer Case	1 Units					
	Is the Outer Case Splittable?	No					
PRODUCT WEIGHTS	Inner Component						
	Variable Weight Consumer Item	No					
	Inner Component Weight	941 g					
	Outer Case						
	Outer Case Gross Weight	1.06 kg					
	Outer Case Net Weight	0.94 kg					
PRODUCT DIMENSIONS	Inner Component						
	Inner Component Depth	320 mm					
	Inner Component Width	180 mm					
	Inner Component Height	17 mm					
	Outer Case						
	Outer Case Depth	322 mm					
	Outer Case Width	203 mm					
	Outer Case Height	40 mm					
PALLET INFORMATION	Quantity of Cases Per Pallet Layer	16 Cases	Pallet Height		0.95 MTR		
	Quantity of Layers Per Pallet	20 Layers	Pallet Gross Weight		361.6 kg		
	Quantity of Cases Per Pallet	320 Cases					
PACKAGING	Inner Component Packaging						
	Type	Materials	Weight	Recycled Plastic %	Recyclable	Returnable	Composite
	Foil	Plastic	3 g	- %			
	Foil	Aluminium	24 g	- %			

Outer Case Packaging

Type	Materials	Weight	Recycled Plastic %	Recyclable	Returnable	Composite
Case	Paper/Cardboard	82 g	- %			

Transport Packaging

Type	Materials	Weight	Recycled Plastic %	Recyclable	Returnable	Composite
Other	Plastic	0.94 g	- %			
Other	Paper/Cardboard	0.94 g	- %			
Other	Wood	78.1 g	- %			

OTHER INFORMATION

Intrastat/Taric Code	1905907000
Commodity Code	19059070

Manufacturer Comments

Transit packaging weights are given per case

CONTACT INFORMATION

Address

The Handmade Cake Co.
The Bakery
Gardner Road
Maidenhead
Berkshire
SL6 7TU
United Kingdom

P: (Phone) 01628 770908

Complaints Contact

Technical Team
Maidenhead.Technical@mdesserts.com

P: (Phone) 01628 770908 Ext. 1052

Technical Contact

Technical Team
Maidenhead.Technical@mdesserts.com

P: (Phone) 01628 770908 Ext. 1052

The information on the [Erudus System](#) has been supplied by the manufacturers of the products and, whilst the owners of the Erudus System take steps to ensure the information is regularly updated, they give no warranty and no guarantee that the information is accurate. Product information and ingredients may change, please always read product labels carefully in addition to using the information provided by Erudus.

We do not accept liability for any inaccuracies or incorrect information contained on this site.
Please visit <http://www.erudus.com/terms-and-conditions> for full terms and conditions.