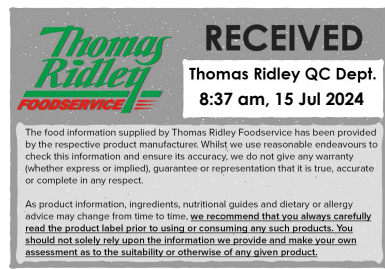


Changed Jul 12, 2024 14:26

Reviewed Jul 12, 2024 14:26

Erudus ID 1b72cea9ea83417885ef6f56cd77975f

Version 2.0



92014

Royal Crown Orange Segments in Syrup (6x3kg)

Orange Segments In Syrup

PRODUCT DESCRIPTION

Orange Segments in light syrup

Brand	Kiril Mischeff Ltd
Manufacturer Product Code	40015900
Product Type	Food
Product Category	Fruit - Canned
Storage Type	Ambient
Erudus ID	1b72cea9ea83417885ef6f56cd77975f
Specification Type	Fruit and Vegetables
Inner Component GTIN	5010227827231
Outer Case GTIN	05010227827569



INGREDIENTS

Ingredient Declaration

Orange Segments (57.7%), Water (32.7%), Sugar (9.45%), Firming Agent - Calcium Chloride (0.1%), Acidity Regulator - Citric Acid (0.05%)

ALLERGENS

Product Contains:

Celery/Celeriac	No	Mustard	No
Cereals Containing Gluten	No	Nuts (Tree)	No
Barley	No	Almond nuts	No
Oats	No	Brazil nuts	No
Rye	No	Cashew nuts	No
Wheat (including Spelt and Khorasan)	No	Hazelnuts	No
Crustacea	No	Macadamia (Queensland) nuts	No
Eggs	No	Pecan nuts	No
Fish	No	Pistachio nuts	No
Lupin	No	Walnuts	No
Milk	No	Peanuts	No
Molluscs	No	Sesame Seeds	No
		Soybeans	No
		Sulphur Dioxide and Sulphites	No

SUPPLEMENTARY INGREDIENT INFORMATION

Palm Oil	No
Hydrogenated Vegetable Oil/Fat	No
GM Protein/DNA	No

ADDITIVES

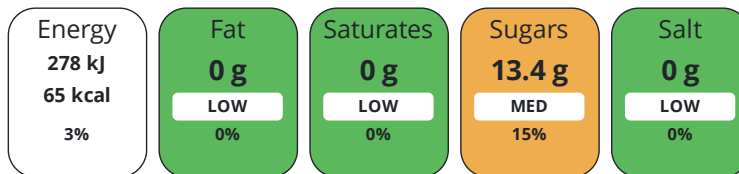
Product Contains:

Artificial Antioxidants	No	Artificial Flavourings	No
Artificial Colours	No	Artificial Preservatives	No
Artificial Flavour Enhancers	No	Artificial Sweeteners	No
Vegan Diet	Suitable for	Vegetarian Diet	Suitable for
Halal Diet	No	Kosher Diet	No

DIET SUITABILITY

NUTRITIONAL INFORMATION

Each 100g/ml portion contains:



of your reference intake.

Typical values per 100g/ml : Energy 65kcal / 278kj

Nutrient	per 100g	RI per 100g	per 80g serving	RI per 80g serving
Energy (kJ)	278 kJ	3%	222.4 kJ	3%
Energy (kcal)	65 kcal	3%	52 kcal	3%
Fat	0 g	0%	-	-
of which Saturates	0 g	0%	-	-
Carbohydrate	13.6 g	5%	10.9 g	4%
of which Sugars	13.4 g	15%	10.7 g	12%
Fibre	0.2 g		0.2 g	
Protein	0.5 g	1%	0.4 g	1%
Salt	0 g	0%	-	-
Sodium	0 mg		-	-

Serving Size 80 g

SUPPLEMENTARY NUTRITIONAL INFORMATION

HANDLING & STORAGE INFORMATION

Directions For Use

Use as required

Storage Instructions

Ambient Storage Once opened store in a non metallic container and refrigerate, use within 3 days

Shelf Life from Time of Production 720 Days

ACCREDITATIONS/ CERTIFICATIONS/ ASSURANCE SCHEMES ORIGIN

BRCGS Certified

Product Country of Origin/Place of Provenance Turkey

PRODUCT CHARACTERISTICS

Standards Testing

Do you undertake trend analysis of microbiological results?	No	Is shelf life testing undertaken?	No
--	----	--	----

CONFIGURATION	Case Configuration		Inner Pack Configuration					
	Total Quantity of Inner Components in Outer Case	6 Units						
	Is the Outer Case Splittable?	No						
PRODUCT WEIGHTS	Inner Component							
	Variable Weight Consumer Item	Yes						
	Net Drained Weight	1.65 kg						
	Outer Case							
	Outer Case Gross Weight	18.3 kg						
	Outer Case Net Weight	18 kg						
PRODUCT DIMENSIONS	Inner Component							
	Inner Component Depth	153 mm						
	Inner Component Width	0 mm						
	Inner Component Height	153 mm						
	Outer Case							
	Outer Case Depth	470 mm						
	Outer Case Width	158 mm						
	Outer Case Height	315 mm						
	PALLET INFORMATION	Quantity of Cases Per Pallet Layer	8 Cases	Pallet Height	1.7 MTR			
Quantity of Layers Per Pallet		7 Layers	Pallet Gross Weight	1024.8 kg				
Quantity of Cases Per Pallet		56 Cases						
PACKAGING	Inner Component Packaging							
	Type	Materials	Weight	Recycled Plastic %	Recyclable	Returnable	Composite	
	Can	Aluminium	220 g	- %				
	Outer Case Packaging							
	Type	Materials	Weight	Recycled Plastic %	Recyclable	Returnable	Composite	
	Case	Paper/Cardboard	320 g	- %				
	Transport Packaging							
	Type	Materials	Weight	Recycled Plastic %	Recyclable	Returnable	Composite	
	Other	Wood	23000 g	- %				
	OTHER INFORMATION CONTACT INFORMATION	Address						
		Kiril Mischeff Ltd						
		Enterprise House						
		Carlton Road						
		Worksop						
		Notts						
S81 7QF								
England								
P: (Phone) 01909 534 000								

The information on the [Erudus System](#) has been supplied by the manufacturers of the products and, whilst the owners of the Erudus System take steps to ensure the information is regularly updated, they give no warranty and no guarantee that the information is accurate. Product information and ingredients may change, please always read product labels carefully in addition to using the information provided by Erudus.

We do not accept liability for any inaccuracies or incorrect information contained on this site.
Please visit <http://www.erudus.com/terms-and-conditions> for full terms and conditions.