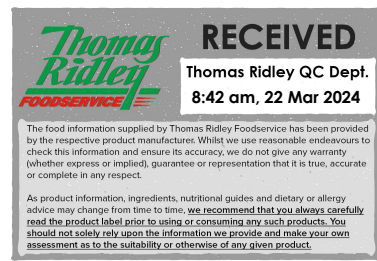


Changed Mar 21, 2024 16:07

Reviewed Mar 21, 2024 16:07

Erudus ID 2669bd4530ed46fb8bb6b1cfbea737f6

Version 2.0



93106

CH356 Harry Ramsden's Junior Battered MSC Pollock Fillet (60x50-70g) 1x3kg

Battered Msc Pollock Fillet

PRODUCT DESCRIPTION

Frozen, skinless, boneless, MSC, pollock fillets in a flash fried crispy golden batter. flash Fried.

Brand	The UK Foodhall Ltd
Manufacturer Product Code	CH356
Product Type	Food
Product Category	Fish - Breaded/Coated
Storage Type	Frozen
Erudus ID	2669bd4530ed46fb8bb6b1cfbea737f6
Specification Type	Fish and Seafood

Outer Case GTIN 5060329041769



INGREDIENTS

Ingredient Declaration

Alaska Pollock (*Gadus chalcogrammus*) FISH (50%), WHEAT Flour (WHEAT Flour, Calcium Carbonate, Iron, Niacin, Thiamin), Water, Rapeseed Oil, Raising Agents; Sodium Carbonates, Diphosphates, Ammonium Carbonates, Salt, Dextrose, Maize Flour, WHEAT Starch, WHEAT Gluten, Maize Starch, Paprika, Turmeric Extract, Sunflower Oil, Emulsifier: Sunflower Lecithin's.

ALLERGENS

Product Contains:

Celery/Celeriac	No	Mustard	No
Cereals Containing Gluten	Yes	Nuts (Tree)	No
Barley	No	Almond nuts	No
Oats	No	Brazil nuts	No
Rye	No	Cashew nuts	No
Wheat (including Spelt and Khorasan)	Yes	Hazelnuts	No
Crustacea	No	Macadamia (Queensland) nuts	No
Eggs	No	Pecan nuts	No
Fish	Yes	Pistachio nuts	No
Lupin	No	Walnuts	No
Milk	No	Peanuts	No
Molluscs	No	Sesame Seeds	No
		Soybeans	No
		Sulphur Dioxide and Sulphites	No

SUPPLEMENTARY INGREDIENT INFORMATION

Palm Oil	No
Hydrogenated Vegetable Oil/Fat	No
GM Protein/DNA	No

ADDITIVES

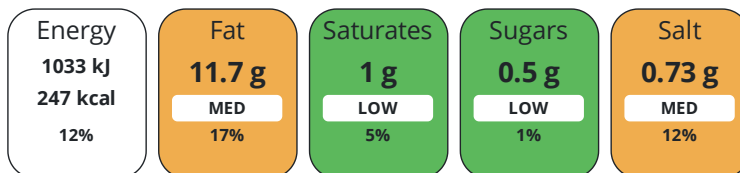
Product Contains:

Artificial Antioxidants	No	Artificial Flavourings	No
Artificial Colours	No	Artificial Preservatives	No
Artificial Flavour Enhancers	No	Artificial Sweeteners	No
Halal Diet	No	Kosher Diet	No

DIET SUITABILITY

NUTRITIONAL INFORMATION

Each 100g/ml portion contains:



of your reference intake.

Typical values per 100g/ml : Energy 247kcal / 1033kj

Nutrient	per 100g	RI per 100g
Energy (kJ)	1033 kJ	12%
Energy (kcal)	247 kcal	12%
Fat	11.7 g	17%
of which Saturates	1 g	5%
Carbohydrate	24 g	9%
of which Sugars	< 0.5 g	1%
Fibre	1.3 g	
Protein	10.6 g	21%
Salt	0.73 g	12%

SUPPLEMENTARY NUTRITIONAL INFORMATION

HANDLING & STORAGE INFORMATION

Directions For Use

Cook From frozen, Place on a baking tray in a pre-heated oven at 200°C/Gas mark 6 for approximately 15-20 minutes or in an halogen oven at 200°C for approximately 10-15 minutes This is a raw product and must be cooked to a minimum temperature of 75°C for 30 seconds or equivalent and tested with a temperature probe.

Storage Instructions

-18C frozen

Shelf Life from Time of Production	730 Days	Exempt From Shelf Life Labelling	No
---	----------	---	----

ACCREDITATIONS/ CERTIFICATIONS/ ASSURANCE SCHEMES ORIGIN

BRCGS Certified	Marine Stewardship Council (MSC)
------------------------	---

Other Accreditation

Product Country of Origin/Place of

Provenance

Additional Origin Details

Manufactured in the U.K.

Catch Zone	61 - Pacific, Northwest, 67 - Pacific, Northeast
-------------------	--

Fish Species	Pollack / Pollock - Theragra chalcogramma
---------------------	---

PRODUCT CHARACTERISTICS

Standards Testing

	Do you undertake trend analysis of microbiological results?	No	Is shelf life testing undertaken?	No				
CONFIGURATION	Case Configuration		Inner Pack Configuration					
	Total Quantity of Inner Components in Outer Case	60 Units						
	Is the Outer Case Splittable?	No						
PRODUCT WEIGHTS	Inner Component							
	Variable Weight Consumer Item	Yes						
	Outer Case							
	Outer Case Gross Weight	3.22 kg						
	Outer Case Net Weight	3 kg						
PRODUCT DIMENSIONS	Inner Component							
	Inner Component Depth	327 mm						
	Inner Component Width	244 mm						
	Inner Component Height	110 mm						
	Outer Case							
	Outer Case Depth	327 mm						
	Outer Case Width	244 mm						
	Outer Case Height	110 mm						
PALLET INFORMATION	Quantity of Cases Per Pallet Layer	14 Cases	Pallet Height	1.77 MTR				
	Quantity of Layers Per Pallet	14 Layers	Pallet Gross Weight	607 kg				
	Quantity of Cases Per Pallet	196 Cases						
PACKAGING	Inner Pack Packaging							
	Type	Materials	Weight	Recycled Plastic %	Recyclable	Returnable	Composite	
	Bag	Plastic / LDPE (Low Density Polyethylene)	20 g	- %	No			
	Outer Case Packaging							
	Type	Materials	Weight	Recycled Plastic %	Recyclable	Returnable	Composite	
	Case	Paper/Cardboard / Cardboard	206 g	- %	Yes			
	Transport Packaging							
	Type	Materials	Weight	Recycled Plastic %	Recyclable	Returnable	Composite	
	Pallet Shroud/Bag	Plastic	150 g	- %				
	Pallet	Wood	27000 g	- %	Yes			
	OTHER INFORMATION	Manufacturer Comments	Manufactured in a BRC food facility					

CONTACT
INFORMATION

Address

The UK Foodhall Ltd
2 Darwin Court
Oxon Business Park
Shrewsbury
Shropshire
SY3 5AL
England

P: (Phone) 0845 3011182

Complaints Contact

wemayhaveaproblem@karenmcquade.com

P: (Phone) 0345-3011182

Technical Contact

Clara Edwards
Technical Manager
technical@karenmcquade.com

P: (Phone) 0345-3011182

Commercial Contact

Shaun Mancrief
Commercial Director
supplychain@karenmcquade.com

P: (Phone) 03453011182

The information on the [Erudus System](#) has been supplied by the manufacturers of the products and, whilst the owners of the Erudus System take steps to ensure the information is regularly updated, they give no warranty and no guarantee that the information is accurate. Product information and ingredients may change, please always read product labels carefully in addition to using the information provided by Erudus.

We do not accept liability for any inaccuracies or incorrect information contained on this site.
Please visit <http://www.erudus.com/terms-and-conditions> for full terms and conditions.