

Thomas Ridley
FOODSERVICE

RECEIVED
Thomas Ridley QC Dept.
8:33 am, 10 Jul 2023

The food information supplied by Thomas Ridley Foodservice has been provided by the respective product manufacturers. Whilst we use reasonable endeavours to check this information and ensure its accuracy, we do not give any warranty (whether express or implied), guarantee or representation that it is true, accurate or complete in any respect.

As product information, ingredients, nutritional guides and dietary or allergy advice may change from time to time, **we recommend that you always carefully read the product label prior to using or consuming any such products. You should not solely rely upon the information we provide and make your own assessment as to the suitability or otherwise of any given product.**

Cadbury Drinking Hot Chocolate 1kg



EAN
5034660022220

Target market(s)
GB, IE

Components

Ingredients

Sugar
Cocoa Powder
Acidity Regulator (Potassium Carbonates)
Flavouring
Cocoa Solids: 25 % minimum

Allergy Text

May contain Milk.

Nutrition

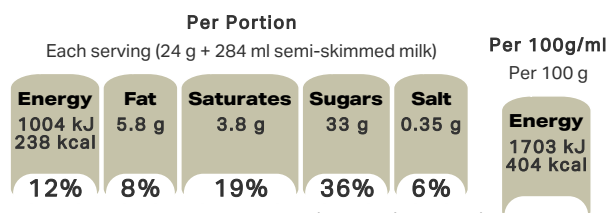
| | Per 100 g | Per Serving (24 g + 284 ml semi-skimmed milk) | *Reference Intakes |
|--------------------|---------------------|---|------------------------|
| Energy | 1703 kJ 404 kcal | 1004 kJ 238 kcal | 8400 kJ / 2000 kcal |
| Fat | 5.8 g | 5.8 g | 70 g |
| of which Saturates | 3.4 g | 3.8 g | 20 g |
| Carbohydrate | 76 g | 33 g | 260 g |
| of which Sugars | 73 g | 33 g | 90 g |
| Fibre | 9.3 g | 2.4 g | - |
| Protein | 6.4 g | 11 g | 50 g |
| Salt | 0.02 g | 0.35 g | 6 g |

*% reference intake of an average adult (8400 kJ / 2000 kcal)

Calculated Nutrition

| | per 100g | Per Serving (24 g + 284 ml semi-skimmed milk) |
|------------------------|----------|---|
| Energy (kJ) | 1703 | 1004 |
| Energy (kcal) | 404 | 238 |
| Fat (g) | 5.8 | 5.8 |
| of which saturates (g) | 3.4 | 3.8 |
| Carbohydrate (g) | 76 | 33 |
| of which sugars (g) | 73 | 33 |
| Fibre (g) | 9.3 | 2.4 |
| Protein (g) | 6.4 | 11 |
| Salt (g) | 0.02 | 0.35 |

Front of Pack Nutrition



% reference intake of an average adult (8400 kJ / 2000 kcal)

Product Description

Alternative Description

Supplier Preferred Product Name - Cadbury Original Drinking Hot Chocolate Tub 1KG

Brand

Cadbury

Features

Swirl into milk
Suitable for vegetarians

Standardised Brand

Brand - Cadbury

Regulated Product Name

Drinking chocolate.

Marketing

Company Name

Mondelez UK / Mondelez Ireland

Company Address

Mondelez UK,
PO Box 7008,
Birmingham,
B30 2PT.

Mondelez Ireland,
Malahide Road,
Coolock,
Dublin 5.

Third Party Logos

- Green Dot

Product Marketing

Your very own hug in a mug. So wonderfully smooth and deliciously warming, it's our classic hot chocolate! Swirl four teaspoons of Cadbury Drinking Chocolate with hot milk, for the ultimate cosy hot chocolate experience. Made with sustainably sourced cocoa. Vegetarian friendly.

Manufacturer Marketing

By Appointment to H.M. The Queen Cocoa and Chocolate Manufacturers Cadbury UK Ltd., Bournville.

Other Information

Made under licence from Cadbury UK Ltd.

Further Description

Cocoa Life
Partnering with Fairtrade Foundation
cocoalife.org

Health & Lifestyle

Lifestyle

- Suitable for Vegetarians

Allergy Advice

Milk - May Contain

Storage & Usage

Storage Type

| Type |
|---------|
| Ambient |

Preparation and Usage

A Simple Guide to Chocolate Heaven

Preparation Instructions (with 284 ml semi-skimmed milk):

Swirl four heaped teaspoons of Cadbury Drinking Chocolate into a mug of hot semi-skimmed milk and stir.

Alternatively, mix the powder with cold semi-skimmed milk in a microwaveable mug and heat in a 800 W microwave on high for 1 min, stir then microwave for a further 30 sec. Stir before drinking.

Storage

Store in a dry place. Protect from heat.

For best before see base.

Brandbank Captured Pack Data

Pack Size

1kg e

Numeric Size

Numeric Size - 1

Dimension

| Shelf Height (mm) | Shelf Width (mm) | Shelf Depth (mm) |
|-------------------|------------------|------------------|
| 104 | 159 | 159 |

(GS1 package measurement rules)

Pack Type

Type - Can

Weight

Gross Weight - 1129

New Product Development

Final Product - Not NPD

Unit Merchandising

Height - 104
Width - 159
Depth - 159
Nesting Height - 104
Unit Stackable - Yes
Unit Stable - Yes
Merchandise Multiple Ways - No

Shelf Ready Pack

Height - 106
Width - 319
Depth - 488
Weight - 6871
Unit Count - 6
Unit Height - 1
Unit Width - 2
Unit Depth - 3
Merchandise Multiple Ways - Yes
Prototype - No
Is Case - No

Case

GTIN - 05034660514442
Height - 106
Width - 319
Depth - 492
Weight - 6904
Unit Count - 6
Prototype - No

Recycling Other Text

Usage Count

Number of uses - Servings

41-42

Usage Other Text

Approximately 41 - 42 servings per pack

Customer Services

Manufacturers Address

Mondelez UK,
PO Box 7008,
Birmingham,
B30 2PT.

Mondelez Ireland,
Malahide Road,
Coolock,
Dublin 5.

Return To

We are passionate about our great quality Cadbury products. Not completely satisfied? Please contact us:

Freephone 0800 818181 (UK only).

Mondelez UK,
PO Box 7008,
Birmingham,
B30 2PT.

Mondelez Ireland,
Freephone 1-800 678708
Malahide Road,
Coolock,
Dublin 5.
www.cadbury.co.uk

Telephone Helpline

0800 818181 (UK)
1-800 678708

Fax Number

Email Helpline

Web Address

www.cadbury.co.uk

Social Media

Extended Data

SEO Metatag

Hot Chocolate, Drinking Chocolate, Cadbury Hot Chocolate, Chocolate Powder, Milk Chocolate, Dairy Milk, Best Way To Make Hot Chocolate, Cadbury Cocoa Powder, Hot Chocolate Powder, Instant Hot Chocolate





