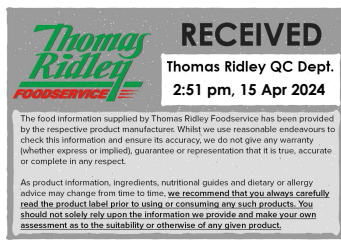


Changed Apr 15, 2024 12:37

Reviewed Apr 15, 2024 12:37

Erudus ID 9834d7765180410b8c2d7d4df19f2310

Version 2.0



94101

DAIRYLEA 125G CHEESE PTN REG 18CA.

Dlea 125g Cheese Ptn Reg Ea 18x125g

PRODUCT DESCRIPTION

Cheese spread with added calcium

Brand	Cadbury UK Limited
Manufacturer Product Code	685508
Product Type	Food
Product Category	Other
Storage Type	Chilled
Erudus ID	9834d7765180410b8c2d7d4df19f2310
Specification Type	Generic
Inner Component GTIN	7622210317629
Outer Case GTIN	7622210317612



INGREDIENTS

Ingredient Declaration

Ingredients: skimmed MILK (water, skimmed MILK powder), CHEESE, MILK fat, whey powder (from MILK), inulin, MILK protein, skimmed MILK powder, emulsifying salts (triphosphate, polyphosphates), calcium phosphate, acidity regulator (citric acid).

ALLERGENS

Product Contains:

Celery/Celery	No	Mustard	No
Cereals Containing Gluten	No	Nuts (Tree)	No
Barley	No	Almond nuts	No
Oats	No	Brazil nuts	No
Rye	No	Cashew nuts	No
Wheat (including Spelt and Khorasan)	No	Hazelnuts	No
Crustacea	No	Macadamia (Queensland) nuts	No
Eggs	No	Pecan nuts	No
Fish	No	Pistachio nuts	No
Lupin	No	Walnuts	No
Milk	Yes	Peanuts	No
Molluscs	No	Sesame Seeds	No
		Soybeans	No
		Sulphur Dioxide and Sulphites	No

FREE FROM CLAIMS

Free From Barley	Yes	Free From Mustard	Yes
Free From Celery/Celeriac	Yes	Free From Nuts	Yes
Free From Crustacea	Yes	Free From Oats	Yes
Free From Eggs	Yes	Free From Peanuts	Yes
Free From Fish	Yes	Free From Rye	Yes
Free From Lupin	Yes	Free From Sesame	Yes
Free From Molluscs	Yes	Free From Soybeans	Yes
		Free From Sulphur Dioxide	Yes
		Very Low Gluten	Yes
		Free From Wheat	Yes

SUPPLEMENTARY INGREDIENT INFORMATION

Palm Oil	No
Hydrogenated Vegetable Oil/Fat	No
GM Protein/DNA	No

ADDITIVES

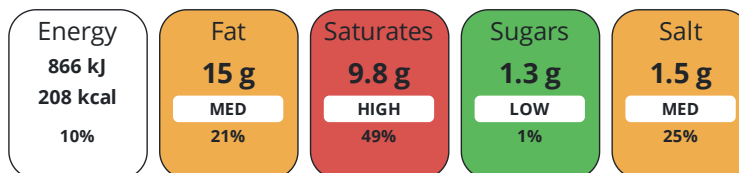
Product Contains:

DIET SUITABILITY

Vegan Diet	No	Vegetarian Diet	Suitable for
Halal Diet	No	Kosher Diet	No

NUTRITIONAL INFORMATION

Each 100g/ml portion contains:



of your reference intake.

Typical values per 100g/ml : Energy 208kcal / 866kJ

Nutrient	per 100g	RI per 100g
Energy (kJ)	866 kJ	10%
Energy (kcal)	208 kcal	10%
Fat	15 g	21%
of which Saturates	9.8 g	49%
Carbohydrate	4.7 g	2%
of which Sugars	1.3 g	1%
Fibre	4.7 g	
Protein	12 g	24%
Salt	1.5 g	25%

Serving Size Description	1 portion = 15.63 g. Contains 8 portions.
Number of Servings	8 Servings

SUPPLEMENTARY NUTRITIONAL INFORMATION

HANDLING & STORAGE INFORMATION

Directions For Use

Ready To Eat

Storage Instructions

KEEP REFRIGERATED

Shelf Life from Time of Production	183 Days	Exempt From Shelf Life Labelling	No
---	----------	---	----

ORIGIN

Product Country of Origin/Place of Provenance Belgium

PRODUCT CHARACTERISTICS

Standards Testing

Do you undertake trend analysis of microbiological results?	No	Is shelf life testing undertaken?	No
--	----	--	----

CONFIGURATION

Case Configuration

Inner Pack Configuration

Total Quantity of Inner Components in Outer Case 18 Units

Is the Outer Case Splittable? No

PRODUCT WEIGHTS

Inner Component

Variable Weight Consumer Item No

Inner Component Weight 125 g

Outer Case

Outer Case Gross Weight 2.67 kg

Outer Case Net Weight 2.25 kg

PRODUCT DIMENSIONS

Inner Component

Inner Component Depth 22 mm

Inner Component Width 111 mm

Inner Component Height 111 mm

Outer Case

Outer Case Depth 200 mm

Outer Case Width 117 mm

Outer Case Height 225 mm

PALLET INFORMATION

Quantity of Cases Per Pallet Layer	40 Cases	Pallet Height	1.57 MTR
---	----------	----------------------	----------

Quantity of Layers Per Pallet	7 Layers	Pallet Gross Weight	807.14 kg
--------------------------------------	----------	----------------------------	-----------

Quantity of Cases Per Pallet	280 Cases
-------------------------------------	-----------

PACKAGING

Inner Component Packaging

Type	Materials	Weight	Recycled Plastic %	Recyclable	Returnable	Composite
Box	Plastic	5.76 g	- %			
Box	Aluminium	59.04 g	- %			

Outer Case Packaging

Type	Materials	Weight	Recycled Plastic %	Recyclable	Returnable	Composite
Case	Paper/Cardboard	102 g	- %			

OTHER INFORMATION

CONTACT
INFORMATION

Address

Cadbury UK Limited
PO Box 12
Bournville Lane
Bournville
Birmingham
B30 2LU
England

P. (Phone) +44 1214 582 000

Technical Contact

Tomas Sakalik
Publication Expert
tomas.sakalik@mdlz.com

The information on the [Erudus System](#) has been supplied by the manufacturers of the products and, whilst the owners of the Erudus System take steps to ensure the information is regularly updated, they give no warranty and no guarantee that the information is accurate. Product information and ingredients may change, please always read product labels carefully in addition to using the information provided by Erudus.

We do not accept liability for any inaccuracies or incorrect information contained on this site.
Please visit <http://www.erudus.com/terms-and-conditions> for full terms and conditions.