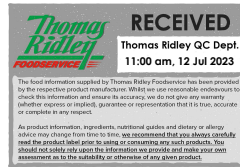


Supplier's Product Code :
Product Added :
Last Updated by Supplier :
erudus id :

365906
20 July 2015
16 February 2023
685eeee9be17484f821430004d94d58d



The information on the Erudus System has been supplied by the manufacturers of the products and, whilst the owners of the Erudus System take steps to ensure the information is regularly updated, they give no warranty and no guarantee that the information is accurate. Product information and ingredients may change, please always read product labels carefully in addition to using the information provided by Erudus One.

We do not accept liability for any inaccuracies or incorrect information contained on this site. Please visit <http://www.erudus.com/terms-and-conditions> for full terms and conditions.

Princes Fruit Filling Red Cherry 6x410g

Short Product Name:

Product Description:

Red Cherry Fruit Filling

General Information

Food/Drink :	Food
Product Category :	Ambient
Generic Product Type :	Fruit - Canned

Supplier's Product Code :

365906

Supplier: Princes Limited

Royal Liver Building

Pier Head

Liverpool

L3 1NX

England

P: 0151 966 7000

OUTER PRODUCT

Outer case Information

Outer Case GTIN :	5000232900852	Outer Case Length :	235 mm
Packaging Type Description :	Case	Outer Case Width :	159 mm
Total Quantity of Inner Units in Outer Case :	6 Units	Outer Case Height :	112 mm
Is Trade Item Splittable? :	Yes	Product Gross Weight :	0.46 kg
		Product Net Weight :	0.41 kg

Pallet Information

Quantity of Cases Per Pallet Layer :	32 Cases	Pallet Height :	1.50 MTR
Quantity of Layers Per Pallet :	12 Layers	Pallet Gross Weight :	1,098.00 kg
Quantity of Cases Per Pallet :	384 Cases		

Logistical Information

Shelf Life from Time of Production :	730 Days	Minimum Order Quantity :	112 Cases
Guaranteed Shelf Life on Delivery :	Not specified.	Delivery Lead Time :	5 Days

Waste Packaging Weight - Outer Case

Glass :	0.00 g	Aluminium :	0.00 g
Plastic :	8.00 g	Steel :	0.00 g
Percentage Recycled Plastic :	50.00 %	Other :	0.00 g
Paper/Board :	17.80 g		

Waste Packaging Weight - Transport Packaging

Plastic :	384.00 g	Wood Total :	29,000.00 g
Paper/Board :	4.73 g	Is Pallet Returnable? :	Yes
Percentage Recycled Plastic :	20.00 %		

Other Information

Supplier Comments :	N/A
---------------------	-----

INNER PRODUCT

Origin Information

Product Country of Origin/Place of Provenance : United Kingdom

Additional Origin Details :
N/A

Inner Pack Information

Internal GTIN : 5000232900845

Packaging Type Description : Can

Variable Weight Consumer Item : No

Net Drained Weight : Not specified.

Inner Unit Length : 73 mm

Inner Unit Height : 110 mm

Inner Unit Width : 73 mm

Inner Product Weight : 410.00 g

Inner Product Weight Units : g

Weight/Volume :
410g

Handling Information

Directions For Use :
N/A

Storage Instructions :
Store in a cool dry place. Once opened empty, cover and refrigerate. Use within 3 days.

Dietary Information

Ingredients :

Water, Red Cherries (37%), Sugar, Modified Maize Starch, Flavouring.

Product contains:

GM Protein/DNA :	No
Celery/Celeriac (and products thereof) :	No
Lupin (and products thereof) :	No
Eggs (and products thereof) :	No
Fish (and products thereof) :	No
Soybeans (and products thereof) :	No
Milk (and products thereof) :	No
Mustard (and products thereof) :	No
Peanuts (and products thereof) :	No
Sesame Seeds (and products thereof) :	No
Crustacea (and products thereof) :	No
Molluscs (and products thereof) :	No
Nuts (and products thereof) :	No
Almond nuts :	No
Hazelnuts :	No
Walnuts :	No
Cashew nuts :	No
Pecan nuts :	No
Brazil nuts :	No
Pistachio nuts :	No
Macadamia nuts :	No
Queensland nuts :	No
Cereals Containing Gluten :	No
Wheat (and products thereof) :	No
Rye (and products thereof) :	No
Barley (and products thereof) :	No
Oats (and products thereof) :	No
Spelt (and products thereof) :	No
Kamut (and products thereof) :	No
Gluten content <20ppm :	Yes
Hydrogenated Vegetable Oil/Fat :	No
Palm Oil :	No
Sulphur Dioxide and Sulphites :	Below 10mg per kg/litre (not 0 mg)
Sulphur Dioxide/Sulphites Concentration :	<= 1.5 mg/kg

Product contains :

Artificial Antioxidants :	No
Artificial Colours :	No
Artificial Flavourings :	No
Artificial Flavour Enhancers :	No
Artificial Preservatives :	No
Artificial Sweeteners :	No

Product suitability:

Suitable for a Vegetarian Diet :	Yes
Suitable for a Vegan Diet :	No
Suitable for Sufferers of Lactose Intolerance :	Yes
Suitable for Coeliacs :	Yes
Approved for a Halal Diet :	No
Approved for a Kosher Diet :	No
HFSS (High in Fat, Salt and Sugar) :	No

Allergen Statement :

Not specified.

Nutritional Information

Average Serving :	205.00 g or ml
Count per 100g :	Not specified.
Count Per Pack :	Not specified.
Energy per 100 G/ML :	302.00 kJ
Energy per 100 G/ML :	71.00 kcal
Fat per 100 G/ML :	0.4 g
- of which Saturates per 100 G/ML :	0.1 g
- of which Mono-unsaturates per 100 G/ML :	Not specified.
- of which Polyunsaturates per 100 G/ML :	Not specified.
Trans Fats per 100 G\ML :	Not specified.
Carbohydrate Per 100 G/ML :	16 g
- of which Sugars per 100 G/ML :	11.4 g
- of which Polyols per 100 G/ML :	Not specified.
- of which Starch per 100 G/ML :	Not specified.
Fibre per 100 G/ML :	0.6 g
Protein per 100 G/ML :	0.6 g
Salt per 100 G/ML :	0.01 g
Sodium per 100 G\ML :	Not specified.

Vitamin A per 100g :	Not specified.
Vitamin C per 100g :	Not specified.
Folate/Folic Acid per 100g :	Not specified.
Calcium per 100g :	Not specified.
Iron per 100g :	Not specified.
Zinc per 100g :	Not specified.
Cholesterol per 100 G/ML (UK/FR) :	Not specified.
Non Milk Extrinsic Sugars per 100gm :	Not specified.
Alcoholic Strength %Vol :	Not specified.
Fat Percentage in Dry Matter per 100g :	Not specified.

Waste Packaging Weight - Inner Unit

Glass :	0.00 g
Plastic :	0.00 g
Percentage Recycled Plastic :	Not specified.
Paper/Board :	1.91 g

Aluminium :	0.00 g
Steel :	47.40 g
Other :	0.00 g

Accreditations / Certifications / Assurance Schemes

BRCGS Certified Production :	Yes
Red Tractor :	No
Fairtrade :	No
Marine Stewardship Council Certified (MSC) :	No
Organic :	No
SALSA (Safe & Local Supplier Approval) :	No
British Lion Mark :	No
RSPCA Assured :	No
LEAF Marque (Linking Environment and Farming) :	No
Rainforest Alliance :	No
Food for Life Supplier Scheme :	No
Quality Meat Scotland :	No
Farm Assured Welsh Livestock :	No
Northern Ireland Beef & Lamb Farm Quality Assurance Scheme :	No
Quality Standard Mark (Beef/Lamb) :	No
Roundtable of Sustainable Palm Oil (RSPO) :	No
School Approved (The Requirement for School Food Regulation 2014) :	No
IFS Food Standard :	No
Best Aquaculture Practices (BAP) Certification :	No
ISO 14001 (Environmental System) :	No
FSSC 22000 :	No

Other Accreditation :	N/A
Intra Stat/Taric Code :	Not specified.
Commodity Code :	Not specified.
Identification/Health Marks :	Not specified.

Standards Testing

Do you undertake trend analysis of
microbiological results? : -

Is shelf life testing undertaken? : -

Microbiological Standards

Not available.

Analytical Standards

Not available.