


Changed Dec 31, 2024 11:47

Reviewed Dec 31, 2024 11:47

Erudus ID add074f4e8784c2bb0e7702bd2e8b231

Version 5.2

**RECEIVED**  
Thomas Ridley QC Dept.  
9:07, 15 Jan 2025

The food information supplied by Thomas Ridley Foodservice has been provided by the respective product manufacturer. Whilst we use reasonable endeavours to check this information and ensure its accuracy, we do not give any warranty (whether express or implied), guarantee or representation that it is true, accurate or complete in any respect.

As product information, ingredients, nutritional guides and dietary or allergy advice may change from time to time, **we recommend that you always carefully read the product label prior to using or consuming any such products. You should not solely rely upon the information we provide and make your own assessment as to the suitability or otherwise of any given product.**

94216

# SOURDOUGH ROLL (RTA)

Sourdough Roll 40x100g

## PRODUCT DESCRIPTION

Frozen, fully baked moulded individual bread piece with a fermented flavour

Brand	Speciality Breads Ltd
Manufacturer Product Code	FB400
Product Type	Food
Product Category	Bread Buns & Rolls
Storage Type	Frozen
Erudus ID	add074f4e8784c2bb0e7702bd2e8b231
Specification Type	Bakery Products
Outer Case GTIN	5032633154008



## INGREDIENTS

### Ingredient Declaration

**Wheat** Flour (Fortified with Calcium Carbonate, Niacin, Iron, Thiamin), Water, Fermented **Wheat** Flour, Yeast, **Wheat** Protein, Salt, Flour Treatment Agent: E 300.

## ALLERGENS

Product Contains:

Celery/Celeriac	No
Cereals Containing Gluten	Yes
Barley	May Contain
Oats	No
Rye	May Contain
Wheat (including Spelt and Khorasan)	Yes
Crustacea	No
Eggs	May Contain
Fish	No
Lupin	No
Milk	May Contain
Molluscs	No

Mustard	No
Nuts (Tree)	No
Almond nuts	No
Brazil nuts	No
Cashew nuts	No
Hazelnuts	No
Macadamia (Queensland) nuts	No
Pecan nuts	No
Pistachio nuts	No
Walnuts	No
Peanuts	No
Sesame Seeds	No
Soybeans	No
Sulphur Dioxide and Sulphites	No

Risk Source:

## SUPPLEMENTARY INGREDIENT INFORMATION

Palm Oil	No
Hydrogenated Vegetable Oil/Fat	No
GM Protein/DNA	No

ADDITIVES

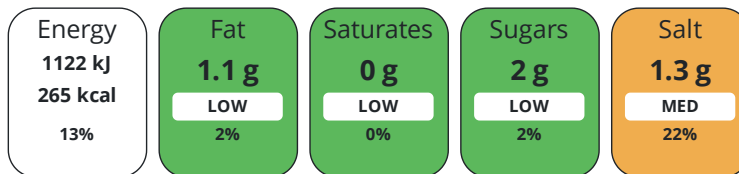
Product Contains:

<b>Artificial Antioxidants</b>	No	<b>Artificial Flavourings</b>	No
<b>Artificial Colours</b>	No	<b>Artificial Preservatives</b>	No
<b>Artificial Flavour Enhancers</b>	No	<b>Artificial Sweeteners</b>	No
<b>Vegan Diet</b>	Suitable for	<b>Vegetarian Diet</b>	Suitable for
<b>Halal Diet</b>	No	<b>Kosher Diet</b>	No

DIET SUITABILITY

NUTRITIONAL INFORMATION

Each 100g/ml portion contains:



of your reference intake.

Typical values per 100g/ml : Energy 265kcal / 1122kJ

Nutrient	per 100g	RI per 100g
<b>Energy (kJ)</b>	1122 kJ	13%
<b>Energy (kcal)</b>	265 kcal	13%
<b>Fat</b>	1.1 g	2%
of which Saturates	0 g	0%
of which Mono-unsaturates	0 g	
of which Polyunsaturates	0 g	
<b>Carbohydrate</b>	54 g	21%
of which Sugars	2 g	2%
of which Starch	0 g	
<b>Fibre</b>	3.1 g	
<b>Protein</b>	11 g	22%
<b>Salt</b>	1.3 g	22%

SUPPLEMENTARY NUTRITIONAL INFORMATION

HFSS (HIGH IN FAT, SALT AND SUGAR) HANDLING & STORAGE INFORMATION

<b>HFSS Status</b>	Yes
--------------------	-----

**Directions For Use**

FULLY BAKED. DEFROST INSIDE FOOD-SAFE PLASTIC BAG AT ROOM TEMPERATURE UNTIL COMPLETELY THAWED.

**Storage Instructions**

FROZEN. STORE AT -18°C, DO NOT RE-FREEZE.

<b>Shelf Life from Time of Production</b>	365 Days
---	----------

ACCREDITATIONS/ CERTIFICATIONS/ ASSURANCE SCHEMES ORIGIN

<b>BRCGS Certified</b>	<b>Red Tractor</b>
------------------------	--------------------

<b>Product Country of Origin/Place of Provenance</b>	United Kingdom
--	----------------

**Additional Origin Details**

n/a

PRODUCT CHARACTERISTICS	Standards Testing						
	<b>Do you undertake trend analysis of microbiological results?</b>	Yes	<b>Is shelf life testing undertaken?</b>		Yes		
CONFIGURATION	Case Configuration		Inner Pack Configuration				
	<b>Total Quantity of Inner Components in Outer Case</b>	40 Units	<b>Count per Inner Component</b>		40		
	<b>Is the Outer Case Splittable?</b>	No					
PRODUCT WEIGHTS	Inner Component						
	<b>Variable Weight Consumer Item</b>	No					
	<b>Inner Component Weight</b>	100 g					
	<b>Net Drained Weight</b>	0 g					
	Outer Case						
	<b>Outer Case Gross Weight</b>	4.38 kg					
	<b>Outer Case Net Weight</b>	0.38 kg					
PRODUCT DIMENSIONS	Inner Component						
	<b>Inner Component Depth</b>	595 mm					
	<b>Inner Component Width</b>	235 mm					
	<b>Inner Component Height</b>	268 mm					
	Outer Case						
	<b>Outer Case Depth</b>	238 mm					
	<b>Outer Case Width</b>	598 mm					
	<b>Outer Case Height</b>	268 mm					
PALLET INFORMATION	<b>Quantity of Cases Per Pallet Layer</b>	8 Cases	<b>Pallet Type</b>		UK Standard Pallet		
	<b>Quantity of Layers Per Pallet</b>	6 Layers	<b>Pallet Height</b>		1.85 MTR		
	<b>Quantity of Cases Per Pallet</b>	48 Cases	<b>Pallet Gross Weight</b>		222.88 kg		
PACKAGING	Inner Component Packaging						
	<b>Type</b>	<b>Materials</b>	<b>Weight</b>	<b>Recycled Plastic %</b>	<b>Recyclable</b>	<b>Returnable</b>	<b>Composite</b>
	Film	Plastic	17 g	- %			
	Outer Case Packaging						
	<b>Type</b>	<b>Materials</b>	<b>Weight</b>	<b>Recycled Plastic %</b>	<b>Recyclable</b>	<b>Returnable</b>	<b>Composite</b>
	Case	Paper/Cardboard	389 g	- %			
	Transport Packaging						
	<b>Type</b>	<b>Materials</b>	<b>Weight</b>	<b>Recycled Plastic %</b>	<b>Recyclable</b>	<b>Returnable</b>	<b>Composite</b>
	Other	Plastic	525 g	- %		Yes	
	Other	Paper/Cardboard	110 g	- %		Yes	
	OTHER INFORMATION	<b>Intrastat/Taric Code</b>	1905				

CONTACT  
INFORMATION

Address

Speciality Breads Ltd  
Unit J2 Channel Road  
Westwood Industrial Estate  
Margate  
Kent  
CT9 4JS  
England

P: (Phone) 01843 209442

The information on the [Erudus System](#) has been supplied by the manufacturers of the products and, whilst the owners of the Erudus System take steps to ensure the information is regularly updated, they give no warranty and no guarantee that the information is accurate. Product information and ingredients may change, please always read product labels carefully in addition to using the information provided by Erudus.

We do not accept liability for any inaccuracies or incorrect information contained on this site.  
Please visit <http://www.erudus.com/terms-and-conditions> for full terms and conditions.