



Changed Mar 20, 2024 16:56

Reviewed Mar 20, 2024 16:56

Erudus ID 1010e068ac434396a78d899aeb95b8e0

Version 2.0

RECEIVED
Thomas Ridley QC Dept.
10:49 am, 21 Mar 2024



The food information supplied by Thomas Ridley Foodservice has been provided by the respective product manufacturer. Whilst we use reasonable endeavours to check this information and ensure its accuracy, we do not give any warranty (whether express or implied), guarantee or representation that it is true, accurate or complete in any respect.

As product information, ingredients, nutritional guides and dietary or allergy advice may change from time to time, we recommend that you always carefully read the product label prior to using or consuming any such products. You should not solely rely upon the information we provide and make your own assessment as to the suitability or otherwise of any given product.

98008

NESCAFE GOLD BLEND 6X500G

Nescafe Gold Blend 500g 6x

PRODUCT DESCRIPTION

Freeze-dried soluble coffee with finely ground roasted coffee.

Brand	Nestle UK
Manufacturer Product Code	12339246
Product Type	Drink
Product Category	Tea & Coffee
Storage Type	Ambient
Erudus ID	1010e068ac434396a78d899aeb95b8e0
Specification Type	Drinks



Inner Component GTIN	7613035301641
Outer Case GTIN	07613035301658



INGREDIENTS

Ingredient Declaration

Soluble coffee, Roast and ground coffee (3%).

ALLERGENS

Product Contains:

Celery/Celery	No	Mustard	No
Cereals Containing Gluten	No	Nuts (Tree)	No
Barley	No	Almond nuts	No
Oats	No	Brazil nuts	No
Rye	No	Cashew nuts	No
Wheat (including Spelt and Khorasan)	No	Hazelnuts	No
Crustacea	No	Macadamia (Queensland) nuts	No
Eggs	No	Pecan nuts	No
Fish	No	Pistachio nuts	No
Lupin	No	Walnuts	No
Milk	No	Peanuts	No
Molluscs	No	Sesame Seeds	No
		Soybeans	No
		Sulphur Dioxide and Sulphites	No
Palm Oil	No		
Hydrogenated Vegetable Oil/Fat	No		
GM Protein/DNA	No		

SUPPLEMENTARY INGREDIENT INFORMATION

ADDITIVES

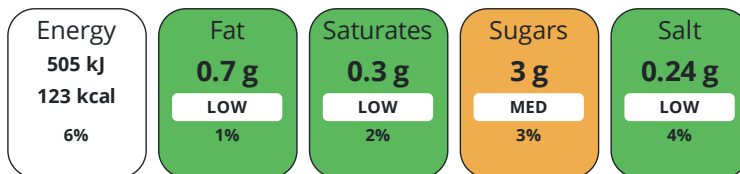
Product Contains:

Artificial Antioxidants	No	Artificial Flavourings	No
Artificial Colours	No	Artificial Preservatives	No
Artificial Flavour Enhancers	No	Artificial Sweeteners	No
Vegan Diet	Suitable for	Vegetarian Diet	Suitable for
Halal Diet	Suitable for	Kosher Diet	Suitable for

DIET SUITABILITY

NUTRITIONAL INFORMATION

Each 100g/ml portion contains:



of your reference intake.

Typical values per 100g/ml : Energy 123kcal / 505kj

Nutrient	per 100g	RI per 100g
Energy (kJ)	505 kJ	6%
Energy (kcal)	123 kcal	6%
Fat	0.7 g	1%
of which Saturates	0.3 g	2%
Carbohydrate	3 g	1%
of which Sugars	3 g	3%
Fibre	34.2 g	
Protein	8 g	16%
Salt	0.24 g	4%

SUPPLEMENTARY NUTRITIONAL INFORMATION

HFSS (HIGH IN FAT, SALT AND SUGAR) HANDLING & STORAGE INFORMATION

HFSS Status	No
--------------------	----

Directions For Use

For the Perfect Serve always use a dry measure and freshly boiled water (not boiling hot) ** 1 rounded teaspoon (minimum 1.8g) per mug 1 rounded tablespoon (minimum 6g) per pint

Storage Instructions

Store in a cool, dry place.

Shelf Life from Time of Production	365 Days	Exempt From Shelf Life Labelling	No
---	----------	---	----

ACCREDITATIONS/ CERTIFICATIONS/ ASSURANCE SCHEMES ORIGIN

FSSC 22000

Product Country of Origin/Place of United Kingdom

Provenance

PRODUCT CHARACTERISTICS

Standards Testing			
Do you undertake trend analysis of microbiological results?	No	Is shelf life testing undertaken?	No

CONFIGURATION	Case Configuration		Inner Pack Configuration				
	Total Quantity of Inner Components in Outer Case	6 Units					
	Is the Outer Case Splittable?	No					
PRODUCT WEIGHTS	Inner Component						
	Outer Case						
	Outer Case Gross Weight	4.4 kg					
	Outer Case Net Weight	3 kg					
PRODUCT DIMENSIONS	Inner Component						
	Inner Component Depth	210 mm					
	Inner Component Width	108 mm					
	Inner Component Height	136 mm					
	Outer Case						
	Outer Case Depth	424 mm					
	Outer Case Width	323 mm					
	Outer Case Height	137 mm					
PALLET INFORMATION	Quantity of Cases Per Pallet Layer	8 Cases	Pallet Height	1.3 MTR			
	Quantity of Layers Per Pallet	8 Layers	Pallet Gross Weight	315 kg			
	Quantity of Cases Per Pallet	64 Cases					
PACKAGING	Inner Component Packaging						
	Type	Materials	Weight	Recycled Plastic %	Recyclable	Returnable	Composite
	Can	Plastic	38 g	- %			
	Can	Steel	184.5 g	- %			
	Outer Case Packaging						
	Type	Materials	Weight	Recycled Plastic %	Recyclable	Returnable	Composite
	Case	Plastic	21.5 g	- %			
	Case	Paper/Cardboard	80 g	- %			
	Transport Packaging						
	Type	Materials	Weight	Recycled Plastic %	Recyclable	Returnable	Composite
	Other	Plastic	160 g	- %			
	Other	Wood	30000 g	- %			
	OTHER INFORMATION						

CONTACT
INFORMATION

Address

Nestle UK
Nestlé UK Ltd
Haxby Road
York
YO31 8TA1
England

P: (Phone) 0800 00 00 30

Complaints Contact

consumer.services@uk.nestle.com

P: (Phone) 0800 00 00 30

The information on the [Erudus System](#) has been supplied by the manufacturers of the products and, whilst the owners of the Erudus System take steps to ensure the information is regularly updated, they give no warranty and no guarantee that the information is accurate. Product information and ingredients may change, please always read product labels carefully in addition to using the information provided by Erudus.

We do not accept liability for any inaccuracies or incorrect information contained on this site.
Please visit <http://www.erudus.com/terms-and-conditions> for full terms and conditions.