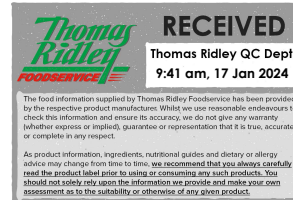


Changed Jan 16, 2024 15:52

Reviewed Jan 16, 2024 15:52

Erudus ID 96e4500485ce45be8ee386c7c256f0aa

Version 2.0



Red Tractor Gammon 15x500g

Red Tractor Gammon 500g

PRODUCT DESCRIPTION

Red Tractor certified cooked gammon ham, boneless

Brand	Kings Fine Cooked Meats
Manufacturer Product Code	REDGAMPT50
Product Type	Food
Product Category	Bacon & Gammon
Storage Type	Chilled
Erudus ID	96e4500485ce45be8ee386c7c256f0aa
Specification Type	Meat
Inner Component GTIN	5060388581268
Inner Pack GTIN	5060388581268

INGREDIENTS

Ingredient Declaration

Pork (100g of Pork per 100g of finished product), Salt, Stabiliser (Triphosphate), Demerara Sugar, Antioxidant (Sodium Ascorbate), Preservative (Sodium Nitrite)

ALLERGENS

Product Contains:

Celery/Celeriac	No	Mustard	No
Cereals Containing Gluten	No	Nuts (Tree)	No
Barley	No	Almond nuts	No
Oats	No	Brazil nuts	No
Rye	No	Cashew nuts	No
Wheat (including Spelt and Khorasan)	No	Hazelnuts	No
Crustacea	No	Macadamia (Queensland) nuts	No
Eggs	No	Pecan nuts	No
Fish	No	Pistachio nuts	No
Lupin	No	Walnuts	No
Milk	No	Peanuts	No
Molluscs	No	Sesame Seeds	No
		Soybeans	No
		Sulphur Dioxide and Sulphites	No

SUPPLEMENTARY INGREDIENT INFORMATION

Palm Oil	No
Hydrogenated Vegetable Oil/Fat	No
GM Protein/DNA	No

ADDITIVES

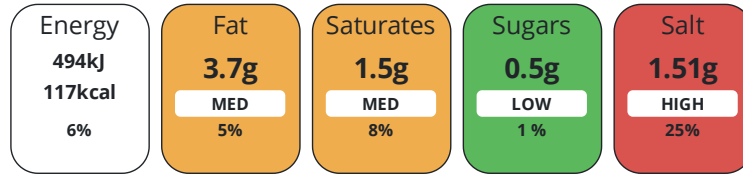
Product Contains:

Artificial Antioxidants	Yes	Artificial Flavourings	No
Artificial Colours	No	Artificial Preservatives	Yes
Artificial Flavour Enhancers	No	Artificial Sweeteners	No
Halal Diet	No	Kosher Diet	No

DIET SUITABILITY

NUTRITIONAL
INFORMATION

Each 100g/ml portion contains:



of your reference intake.

Typical values per 100g/ml : Energy 117kcal / 494kJ

Nutrient	per 100g	RI per 100g	per 50g serving	RI per 50g serving
Energy (kJ)	494 kJ	6%	247 kJ	3%
Energy (kcal)	117 kcal	6%	58.5 kcal	3%
Fat	3.7 g	5%	1.9 g	3%
of which Saturates	1.5 g	8%	0.8 g	4%
Carbohydrate	< 0.5 g	0%	0.3 g	0%
of which Sugars	< 0.5 g	1%	0.3 g	0%
Fibre	< 0.5 g		0.3 g	
Protein	20.7 g	41%	10.4 g	21%
Salt	1.51 g	25%	0.8 g	13%

Serving Size	50 g
Number of Servings	10 Servings

Source of Nutritional Information	Manufacturers analysis
-----------------------------------	------------------------

SUPPLEMENTARY
NUTRITIONAL
INFORMATION

HFSS (HIGH IN
FAT, SALT AND
SUGAR)
HANDLING &
STORAGE
INFORMATION

HFSS Status	2
-------------	---

Directions For Use
Product is ready to eat. Remove the product from the packaging before consuming.

Storage Instructions
Keep refrigerated 0-5°C. Use within 3 days of opening.

Storage Instructions After Opening
Keep refrigerated 0-5°C. Use within 3 days of opening.

Shelf Life from Time of Production	25 Days	Exempt From Shelf Life Labelling	No
Shelf Life From Opening	3 Days		

ACCREDITATIONS/
CERTIFICATIONS/
ASSURANCE
SCHEMES



ORIGIN

Product Country of Origin/Place of Provenance United Kingdom

PRODUCT
CHARACTERISTICS

Standards Testing			
Do you undertake trend analysis of microbiological results?	Yes	Is shelf life testing undertaken?	Yes

ORGANOLEPTICS

Appearance	Deep pink with no bruising or marbling
Aroma	Fresh, clean, meaty aroma
Taste	Rich pork flavour, slightly sweet and salty
Texture	Tender, easy to chew, internal moisture on chewing

HAZARD CONTROLS

Metal Detection	Yes
------------------------	-----

CONFIGURATION

Case Configuration		Inner Pack Configuration	
Total Quantity of Inner Components in Outer Case	15 Units	Is Inner Pack Splittable?	No
Total Quantity of Inner Packs in Outer Case	15 Units		
Is the Outer Case Splittable?	Yes		

PRODUCT WEIGHTS

Inner Component		Inner Pack	
Variable Weight Consumer Item	No	Inner Pack Gross Weight	524 g
Inner Component Weight	500 g	Inner Pack Net Weight	500 g
Net Drained Weight	500 g		
e mark	Yes		

PRODUCT DIMENSIONS

Outer Case			
Outer Case Gross Weight	7.92 kg		
Outer Case Net Weight	7.5 kg		
Inner Component		Inner Pack	
Inner Component Depth	239 mm	Inner Pack Depth	239 mm
Inner Component Width	166 mm	Inner Pack Width	166 mm
Inner Component Height	37 mm	Inner Pack Height	37 mm

PALLET INFORMATION

Outer Case			
Outer Case Depth	385 mm		
Outer Case Width	320 mm		
Outer Case Height	200 mm		
Quantity of Cases Per Pallet Layer	9 Cases	Pallet Height	1.86 MTR
Quantity of Layers Per Pallet	8 Layers	Pallet Gross Weight	540 kg
Quantity of Cases Per Pallet	72 Cases		

PACKAGING

Inner Component Packaging							
Type	Materials	Weight	Recycled Plastic %	Recyclable	Returnable	Composite	
Tray	Plastic	26 g	- %	No	No		
Outer Case Packaging							
Type	Materials	Weight	Recycled Plastic %	Recyclable	Returnable	Composite	
Case	Paper/Cardboard	420 g	- %	Yes	No		

OTHER INFORMATION

Identification/Health Marks	United Kingdom WG 025
------------------------------------	--------------------------

CONTACT
INFORMATION

Address

Kings Fine Cooked Meats
69 Queens Street
Wigan
Lancashire
WN3 4HW
United Kingdom

P: (Phone) 01942322398

The information on the [Erudus System](#) has been supplied by the manufacturers of the products and, whilst the owners of the Erudus System take steps to ensure the information is regularly updated, they give no warranty and no guarantee that the information is accurate. Product information and ingredients may change, please always read product labels carefully in addition to using the information provided by Erudus.

We do not accept liability for any inaccuracies or incorrect information contained on this site.
Please visit <http://www.erudus.com/terms-and-conditions> for full terms and conditions.