

## Cadbury Wispa Chocolate Bar 36g



EAN

7622210470126

Target market(s)

GB, IE



RECEIVED

Thomas Ridley QC Dept.

8:34 am, 10 Jul 2023

The food information supplied by Thomas Ridley Foodservice has been provided by the respective product manufacturer. Whilst we use reasonable endeavours to check this information and ensure its accuracy, we do not give any warranty (whether express or implied), guarantee or representation that it is true, accurate or complete in any respect.

As product information, ingredients, nutritional guides and dietary or allergy advice may change from time to time, **we recommend that you always carefully read the product label prior to using or consuming any such products. You should not solely rely upon the information we provide and make your own assessment as to the suitability or otherwise of any given product.**

## Components

### Ingredients

#### Milk

Sugar

Cocoa Butter

Cocoa Mass

Vegetable Fats (Palm, Shea)

Whey Powder (from **Milk**)

Emulsifier (E442)

Flavourings

Milk Solids 14 % minimum

Cocoa Solids 25 % minimum

Contains Vegetable Fats in addition to Cocoa Butter

### Allergy Text

**May contain Nuts.**

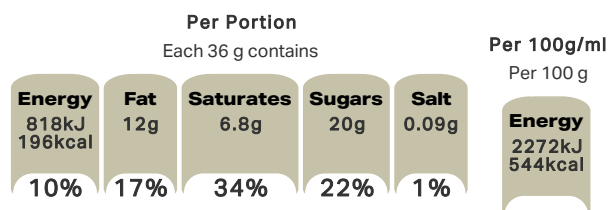
### Nutrition

	Per 100 g:	Per Bar (36 g):
Energy	2272 kJ (544 kcal)	818 kJ (196 kcal)
Fat	32 g	12 g
of which Saturates	19 g	6.8 g
Carbohydrate	56 g	20 g
of which Sugars	55 g	20 g
Fibre	2.2 g	0.8 g
Protein	6.6 g	2.4 g
Salt	0.24 g	0.09 g

### Calculated Nutrition

	per 100g	Per Bar (36 g):
Energy (kJ)	2272	818
Energy (kcal)	544	196
Fat (g)	32	12
of which saturates (g)	19	6.8
Carbohydrate (g)	56	20
of which sugars (g)	55	20
Fibre (g)	2.2	0.8
Protein (g)	6.6	2.4
Salt (g)	0.24	0.09

### Front of Pack Nutrition



% reference intake of an average adult (8400 kJ / 2000 kcal)

## Product Description

### Brand

Cadbury

### Features

Suitable for vegetarians

### Standardised Brand

Brand - Cadbury

### Regulated Product Name

Textured milk chocolate bar.

## Marketing

### Company Name

Mondelez UK / Mondelez Ireland

### Company Address

Mondelez UK,  
PO Box 7008,  
Birmingham,  
B30 2PT.

Mondelez Ireland,  
Malahide Road,  
Coolock,  
Dublin 5.

### Third Party Logos

- Green Dot

### Manufacturer Marketing

By Appointment to H.M. The Queen Cocoa and Chocolate Manufacturers Cadbury UK Ltd., Bournville.

### Other Information

Made under licence from Cadbury UK Ltd.

### Further Description

BeTreatwise.net  
Get to know your treats  
1 x 1 Bar = 10 % of the RI\* of kcal  
\*% reference intake of an average adult (8400 kJ / 2000 kcal)

Cocoa Life  
Partnering with Fairtrade Foundation  
[www.cocoalife.org](http://www.cocoalife.org)

## Health & Lifestyle

### Lifestyle

- Suitable for Vegetarians

### Allergy Advice

Milk - Contains  
Nuts - May Contain

## Storage & Usage

### Storage Type

#### Type

Ambient

### Storage

Store in a dry place. Protect from heat.

## Brandbank Captured Pack Data

### Pack Size

36g e

### Numeric Size

Numeric Size - 36

### Pack Type

Type - Wrap

### Usage Count

Number of uses - Servings

1

### Usage Other Text

1x bar = 1 Portion. 1 portion per pack

## Customer Services

### Manufacturers Address

Mondelez UK,  
PO Box 7008,  
Birmingham,  
B30 2PT.

Mondelez Ireland,  
Malahide Road,  
Coolock,  
Dublin 5.

### Return To

We are passionate about our great quality Cadbury products. Not completely satisfied? Please contact us:

Freephone 0800 818181 (UK only)

Mondelez UK,  
PO Box 7008,  
Birmingham,  
B30 2PT.

Mondelez Ireland,  
Freephone 1-800 678708  
Malahide Road,  
Coolock,  
Dublin 5.  
[www.cadbury.co.uk](http://www.cadbury.co.uk)

### Telephone Helpline

0800 818181 (UK)  
1-800 678708

### Web Address

[www.cadbury.co.uk](http://www.cadbury.co.uk)

