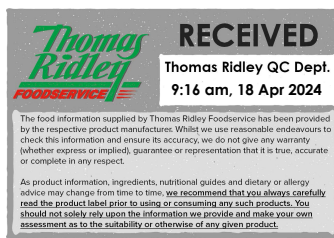


Changed Apr 18, 2024 00:00

Reviewed Apr 17, 2024 10:14

Erudus ID 220e2a643a204ef0b94a2220f38ccf5b

Version 2.0



**Thomas Ridley**  
FOODSERVICE

**RECEIVED**  
Thomas Ridley QC Dept.  
9:16 am, 18 Apr 2024

The food information supplied by Thomas Ridley Foodservice has been provided by the respective product manufacturer. Whilst we use reasonable endeavours to check this information and ensure its accuracy, we do not give any warranty (whether express or implied), guarantee or representation that it is true, accurate or complete in any respect.

As product information, ingredients, nutritional guides and dietary or allergy advice may change from time to time, we recommend that you always carefully read the product label prior to using or consuming any such products. You should not solely rely upon the information we provide and make your own assessment as to the suitability or otherwise of any given product.



98160

# Folkington's cloudy apple juice 250ml

Cloudy Apple Juice 12x250ml

## PRODUCT DESCRIPTION

Pure pressed apple juice from Sussex, Kent & Herefordshire apples.

Brand	Folkington's / Metro Drinks
Manufacturer Product Code	FO025AP
Manufacturer Version	2024 Spec Sheet
Number	
Effective Date	Apr 17, 2024
Product Type	Drink
Product Category	Juices and Cordials
Storage Type	Ambient
Erudus ID	220e2a643a204ef0b94a2220f38ccf5b
Specification Type	Drinks



Inner Component GTIN	5060042980857
Outer Case GTIN	5060042980864



## INGREDIENTS

### Ingredient Declaration

100% pure apple juice (not from concentrate), antioxidant: ascorbic acid

## ALLERGENS

Product Contains:

<b>Celery/Celeriac</b>	No	<b>Mustard</b>	No
<b>Cereals Containing Gluten</b>	No	<b>Nuts (Tree)</b>	No
<b>Barley</b>	No	<b>Almond nuts</b>	No
<b>Oats</b>	No	<b>Brazil nuts</b>	No
<b>Rye</b>	No	<b>Cashew nuts</b>	No
<b>Wheat (including Spelt and Khorasan)</b>	No	<b>Hazelnuts</b>	No
<b>Crustacea</b>	No	<b>Macadamia (Queensland) nuts</b>	No
<b>Eggs</b>	No	<b>Pecan nuts</b>	No
<b>Fish</b>	No	<b>Pistachio nuts</b>	No
<b>Lupin</b>	No	<b>Walnuts</b>	No
<b>Milk</b>	No	<b>Peanuts</b>	No
<b>Molluscs</b>	No	<b>Sesame Seeds</b>	No
		<b>Soybeans</b>	No
		<b>Sulphur Dioxide and Sulphites</b>	No

### Additional Allergen Information

No Allergens

SUPPLEMENTARY  
INGREDIENT  
INFORMATION

<b>Palm Oil</b>	No
<b>Hydrogenated Vegetable Oil/Fat</b>	No
<b>GM Protein/DNA</b>	No

ADDITIVES

Product Contains:

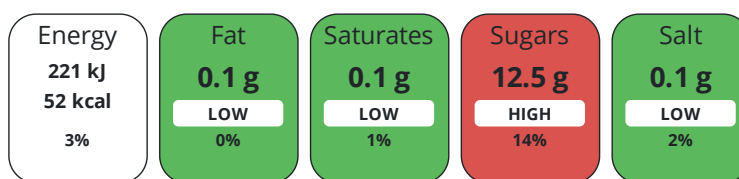
<b>Artificial Antioxidants</b>	Yes	<b>Artificial Flavourings</b>	No
<b>Artificial Colours</b>	No	<b>Artificial Preservatives</b>	No
<b>Artificial Flavour Enhancers</b>	No	<b>Artificial Sweeteners</b>	No

DIET  
SUITABILITY

<b>Vegan Diet</b>	Suitable for	<b>Vegetarian Diet</b>	Suitable for
<b>Halal Diet</b>	No	<b>Kosher Diet</b>	No

NUTRITIONAL  
INFORMATION

Each 100g/ml portion contains:



of your reference intake.

Typical values per 100g/ml : Energy 52kcal / 221kj

Nutrient	per 100ml	RI per 100ml	per 100ml serving	RI per 100ml serving
<b>Energy (kJ)</b>	221 kJ	3%	221 kJ	3%
<b>Energy (kcal)</b>	52 kcal	3%	52 kcal	3%
<b>Fat</b>	0.1 g	0%	0.1 g	0%
<b>of which Saturates</b>	0.1 g	1%	0.1 g	1%
<b>Carbohydrate</b>	12.5 g	5%	12.5 g	5%
<b>of which Sugars</b>	12.5 g	14%	12.5 g	14%
<b>Protein</b>	< 0.5 g	1%	0.5 g	1%
<b>Salt</b>	0.1 g	2%	0.1 g	2%
<b>Sodium</b>	< 0.01 mg	-	-	-
<b>Serving Size</b>	100 ml			

SUPPLEMENTARY  
NUTRITIONAL  
INFORMATION

HANDLING &  
STORAGE  
INFORMATION

**Directions For Use**

Do not consume if safety button on cap does not pop up on first opening. Shake well: once opened, keep refrigerated below 5 deg C and consume within 2 days

**Storage Instructions**

Store at room temperature and away from direct sunlight

**Storage Instructions After Opening**

Shake well: once opened, keep refrigerated below 5 deg C and consume within 2 days

<b>Shelf Life from Time of Production</b>	728 Days	<b>Exempt From Shelf Life Labelling</b>	No
<b>Shelf Life From Opening</b>	2 Days		

ACCREDITATIONS/  
CERTIFICATIONS/  
ASSURANCE  
SCHEMES

<b>BRCGS Certified</b>		<b>Other Accreditation</b>	
------------------------	--	----------------------------	--

ORIGIN	<b>Product Country of Origin/Place of Provenance</b>	United Kingdom					
PRODUCT CHARACTERISTICS CONFIGURATION	<b>Additional Origin Details</b>	Apple juice from England					
	Standards Testing	Standards Testing					
	Case Configuration	Inner Pack Configuration					
	<b>Total Quantity of Inner Components in Outer Case</b>	12 Units					
PRODUCT WEIGHTS	<b>Is the Outer Case Splittable?</b>	Yes					
	Inner Component	Inner Component					
	<b>Inner Component Volume</b>	250 ml					
	Outer Case	Outer Case					
	<b>Outer Case Gross Weight</b>	4.98 kg					
	<b>Outer Case Net Weight</b>	3.12 kg					
PRODUCT DIMENSIONS	Inner Component	Inner Component					
	<b>Inner Component Depth</b>	55 mm					
	<b>Inner Component Width</b>	55 mm					
	<b>Inner Component Height</b>	155 mm					
	Outer Case	Outer Case					
	<b>Outer Case Depth</b>	240 mm					
PALLET INFORMATION	<b>Outer Case Width</b>	185 mm					
	<b>Outer Case Height</b>	160 mm					
	<b>Quantity of Cases Per Pallet Layer</b>	26 Cases			<b>Pallet Height</b>	1.5 MTR	
	<b>Quantity of Layers Per Pallet</b>	8 Layers			<b>Pallet Gross Weight</b>	1075 kg	
	<b>Quantity of Cases Per Pallet</b>	208 Cases					
	PACKAGING	Inner Component Packaging					
<b>Type</b>		<b>Materials</b>	<b>Weight</b>	<b>Recycled Plastic %</b>	<b>Recyclable</b>	<b>Returnable</b>	<b>Composite</b>
Sleeve		Plastic / PET (Polyethylene Terethphalate)	1.6 g	30 %	Yes	No	
Bottle		Glass	142 g	- %	Yes	No	
Lid		Steel	5 g	- %	Yes	No	
Outer Case Packaging							
<b>Type</b>		<b>Materials</b>	<b>Weight</b>	<b>Recycled Plastic %</b>	<b>Recyclable</b>	<b>Returnable</b>	<b>Composite</b>
Shrink Wrap		Plastic / LDPE (Low Density Polyethylene)	48.2 g	30 %	Yes	No	
Case		Paper/Cardboard	28.1 g	- %	Yes	No	
Transport Packaging							
<b>Type</b>		<b>Materials</b>	<b>Weight</b>	<b>Recycled Plastic %</b>	<b>Recyclable</b>	<b>Returnable</b>	<b>Composite</b>
Pallet Wrap		Plastic / LDPE (Low Density Polyethylene)	250 g	30 %	Yes		
Pallet		Wood	20000 g	- %	Yes	No	

MARKETING  
INFORMATION

**Marketing Description**

Made from blending the juice from two apple varieties: Russet apples and Jonagold apples grown in orchards in Sussex, Kent and the Three Counties.

OTHER  
INFORMATION

**Intrastat/Taric Code**

20097199

**Manufacturer Comments**

N/A

CONTACT  
INFORMATION

**Address**

Folkington's / Metro Drinks  
The Workshop  
Endlewick House  
Arlington  
BN26 6RU  
England

**P. (Phone)** 01323 485602

The information on the [Erudus System](#) has been supplied by the manufacturers of the products and, whilst the owners of the Erudus System take steps to ensure the information is regularly updated, they give no warranty and no guarantee that the information is accurate. Product information and ingredients may change, please always read product labels carefully in addition to using the information provided by Erudus.

We do not accept liability for any inaccuracies or incorrect information contained on this site.  
Please visit <http://www.erudus.com/terms-and-conditions> for full terms and conditions.