

Cadbury Boost Chocolate Bar 48.5g



EAN
5034660522782

Target market(s)
GB, IE

Components

Ingredients

Milk

Sugar
Palm Oil
Glucose Syrup
Dextrose
Skimmed **Milk** Powder
Cocoa Butter
Cocoa Mass
Whey Powder (from **Milk**)

Wheat Flour (with added Calcium, Iron, Niacin and Thiamin)

Fat-Reduced Cocoa Powder

Humectant (Glycerol)

Emulsifiers (E442, E471)

Flavourings

Thickener (Dried Cellulose)

Salt

Barley Malt Syrup

Raising Agents (Sodium Hydrogen Carbonate, Tartaric Acid)

Milk Chocolate: Milk Solids 14 % minimum

Contains Vegetable Fats in addition to Cocoa Butter

Allergy Text

May contain Peanuts

Nutrition

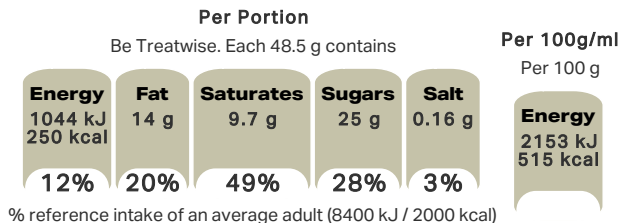
	Per 100 g:	Per Bar (48.5 g):
Energy	2153 kJ / 515 kcal	1044 kJ / 250 kcal
Fat	28 g	14 g
of which Saturates	20 g	9.7 g
Carbohydrate	59 g	29 g
of which Sugars	52 g	25 g
Fibre	1.9 g	0.9 g

Protein	5.6 g	2.7 g
Salt	0.33 g	0.16 g

Calculated Nutrition

	per 100g	Per Bar (48.5 g):
Energy (kJ)	2153	1044
Energy (kcal)	515	250
Fat (g)	28	14
of which saturates (g)	20	9.7
Carbohydrate (g)	59	29
of which sugars (g)	52	25
Fibre (g)	1.9	0.9
Protein (g)	5.6	2.7
Salt (g)	0.33	0.16

Front of Pack Nutrition



Product Description

Alternative Description

Supplier Preferred Product Name - Cadbury Boost Chocolate Bar 48.5g

Brand

Cadbury

Features

Crunchy biscuit pieces, chewy caramel, all smothered in delicious Cadbury milk chocolate
Suitable for vegetarians

Standardised Brand

Brand - Cadbury

Regulated Product Name

Milk chocolate with caramel (26 %) and biscuit (3 %) filling bar.

Marketing

Company Name

Mondelez UK / Mondelez Ireland

Company Address

Mondelez UK,
PO Box 7008,
Birmingham,
B30 2PT.

Mondelez Ireland,
Malahide Road,
Coolock,
Dublin 5.

Product Marketing

Let's taste our way from the inside out. Crunchy biscuit sits in a soft cocoa centre, those two are wrapped in deliciously chewy caramel, and that's then finished off with a thick layer of Cadbury milk chocolate. Mouth-watering yet? Give your tastebuds the boost they're calling for. Made with sustainably sourced cocoa. Vegetarian friendly.

Manufacturer Marketing

By Appointment to H.M. The Queen Cocoa and Chocolate Manufacturers Cadbury UK Ltd., Bournville.

Further Description

Cocoa Life
Partnering with Fairtrade Foundation
www.cocoalife.org

Trademark Information

Made under licence from Cadbury UK Ltd.

Health & Lifestyle

Lifestyle

- Suitable for Vegetarians

Allergy Advice

Barley - Contains
Milk - Contains
Peanuts - May Contain
Wheat - Contains

Storage & Usage

Storage Type

Type
Ambient

Storage

Store in a dry place. Protect from heat.

Brandbank Captured Pack Data

Pack Size

48.5g e

Numeric Size

Numeric Size - 48.5

Dimension

Shelf Height (mm)	Shelf Width (mm)	Shelf Depth (mm)
35	134	21

(GS1 package measurement rules)

Pack Type

Type - Heat Sealed

Weight

Gross Weight - 49

New Product Development

Final Product - Not NPD

Unit Merchandising

Height - 21

Width - 134

Depth - 35

Unit Stackable - No

Unit Stable - Yes

Merchandise Multiple Ways - No

Shelf Ready Pack

GTIN - 05034660043010

Height - 148

Width - 145

Depth - 277

Weight - 2423

Unit Count - 48

Unit Height - 6

Unit Width - 1

Unit Depth - 8

Merchandise Multiple Ways - No

Prototype - No

Is Case - No

Case

GTIN - 05034660043010

Height - 149

Width - 145

Depth - 277

Weight - 2449

Unit Count - 48

Prototype - No

Customer Services

Manufacturers Address

Mondelez UK,
PO Box 7008,
Birmingham,
B30 2PT.

Mondelez Ireland,
Malahide Road,
Coolock,
Dublin 5.

Return To

We are passionate about our great quality Cadbury products. Not completely satisfied? Please contact us:

Freephone 0800 818181 (UK only)

Mondelez UK,
PO Box 7008,
Birmingham,
B30 2PT.

Mondelez Ireland,
Freephone 1-800 678708
Malahide Road,
Coolock,
Dublin 5.
www.cadbury.co.uk

Telephone Helpline

0800 818181 (UK)
1-800 678708

Web Address

www.cadbury.co.uk

Extended Data

SEO Metatag

Boost Chocolate, Boost Chocolate Bar, Cadbury Boost, Chewy Caramel, Biscuit, Biscuit Filling, Milk Chocolate, Vegetarian Chocolate





