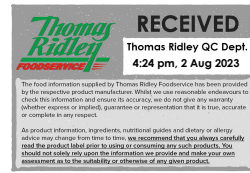


Supplier's Product Code : 02902  
 Product Added : 25 November 2014  
 Last Updated by Supplier : 16 November 2022  
 erudus id : 6401193360364aab97414748bb15bb3f



The information on the Erudus System has been supplied by the manufacturers of the products and, whilst the owners of the Erudus System take steps to ensure the information is regularly updated, they give no warranty and no guarantee that the information is accurate. Product information and ingredients may change, please always read product labels carefully in addition to using the information provided by Erudus One.

We do not accept liability for any inaccuracies or incorrect information contained on this site. Please visit <http://www.erudus.com/terms-and-conditions> for full terms and conditions.

## Alpen Cereal Bar Strawberry & Yogurt 24 x 29g

Short Product Name:  
 Cereal Bar Strawberry & Yogurt

Product Description:  
 Mixed cereal bar with apple and strawberry, dipped and drizzled with a yogurt flavour coating. 24 x 29g bars

### General Information

Food/Drink :	Food
Product Category :	Ambient
Generic Product Type :	Cereals

**Supplier's Product Code :**  
 02902  
**Supplier:** Weetabix Ltd  
 Station Road  
 Burton Latimer  
 NN15 5JR  
 England  
 P: 01536 722181

### OUTER PRODUCT

#### Outer case Information

Outer Case GTIN :	05010029204056	Outer Case Length :	255 mm
Packaging Type Description :	Case	Outer Case Width :	158 mm
Total Quantity of Inner Units in Outer Case :	24 Units	Outer Case Height :	100 mm
Is Trade Item Splittable? :	Yes	Product Gross Weight :	0.78 kg
		Product Net Weight :	0.70 kg

#### Pallet Information

Quantity of Cases Per Pallet Layer :	27 Cases	Pallet Height :	0.56 MTR
Quantity of Layers Per Pallet :	4 Layers	Pallet Gross Weight :	110.00 kg
Quantity of Cases Per Pallet :	108 Cases		

#### Logistical Information

Shelf Life from Time of Production :	365 Days	Minimum Order Quantity :	70 Cases
Guaranteed Shelf Life on Delivery :	274 Days	Delivery Lead Time :	7 Days

#### Waste Packaging Weight - Outer Case

Glass :	0.00 g	Aluminium :	0.00 g
Plastic :	0.00 g	Steel :	0.00 g
Percentage Recycled Plastic :	Not specified.	Other :	0.00 g
Paper/Board :	69.00 g		

#### Waste Packaging Weight - Transport Packaging

Plastic :	Not specified.	Wood Total :	Not specified.
Paper/Board :	Not specified.	Is Pallet Returnable? :	-
Percentage Recycled Plastic :	Not specified.		

#### Other Information

**Supplier Comments:**  
 Mixed cereal bar with apple and strawberry, dipped and drizzled with a yogurt flavour coating.  
 24 x 29g bars  
 Bar film is polypropylene laminated to metallised polypropylene.

## INNER PRODUCT

### Origin Information

Product Country of Origin/Place of Provenance : United Kingdom

Additional Origin Details :  
N/A

### Inner Pack Information

Internal GTIN : 5010029203905

Packaging Type Description : Polypropylene Film

Variable Weight Consumer Item : No

Net Drained Weight : Not specified.

Inner Unit Length : 152 mm

Inner Unit Height : 0 mm

Inner Unit Width : 0 mm

Inner Product Weight : Not specified.

Inner Product Weight Units : g

Weight/Volume :  
N/A

### Handling Information

Directions For Use :  
N/A

Storage Instructions :  
Store in a cool, dry and odour free place.

## Dietary Information

### Ingredients :

Cereals (47%) (Whole **OATS**, Rice, Whole **WHEAT**), Glucose Syrup, Sugar, Vegetable Oils (Palm Kernel, (Contains Sunflower and/or Rapeseed)), Oligofructose Syrup, Dried Apple Pieces (3.1%) (with Preservative; **SULPHUR DIOXIDE**), Humectant; Glycerol, **MILK** Lactose, **MILK** Yogurt Powder (2.5%), Dextrose, Freeze Dried Strawberry (0.8%), Strawberry Juice from Concentrate (0.7%), Maize Starch, Emulsifier; **SOYA** Lecithin, Salt, Elderberry Juice Extract, Flavourings, Acidity Regulator: Malic Acid.

### Product contains:

GM Protein/DNA :	No
Celery/Celeriac (and products thereof) :	No
Lupin (and products thereof) :	No
Eggs (and products thereof) :	No
Fish (and products thereof) :	No
Soybeans (and products thereof) :	Yes
Milk (and products thereof) :	Yes
Mustard (and products thereof) :	No
Peanuts (and products thereof) :	No
Sesame Seeds (and products thereof) :	No
Crustacea (and products thereof) :	No
Molluscs (and products thereof) :	No
Nuts (and products thereof) :	May Contain
Almond nuts :	May Contain
Hazelnuts :	May Contain
Walnuts :	May Contain
Cashew nuts :	May Contain
Pecan nuts :	May Contain
Brazil nuts :	May Contain
Pistachio nuts :	May Contain
Macadamia nuts :	May Contain
Queensland nuts :	May Contain
Cereals Containing Gluten :	Yes
Wheat (and products thereof) :	Yes
Rye (and products thereof) :	No
Barley (and products thereof) :	No
Oats (and products thereof) :	Yes
Spelt (and products thereof) :	No
Kamut (and products thereof) :	No
Gluten content <20ppm :	No
Hydrogenated Vegetable Oil/Fat :	No
Palm Oil :	No
Sulphur Dioxide and Sulphites :	Yes - above 10mg per kg/litre
Sulphur Dioxide/Sulphites Concentration :	45 mg/kg

### Product contains :

Artificial Antioxidants :	No
Artificial Colours :	No
Artificial Flavourings :	No
Artificial Flavour Enhancers :	No
Artificial Preservatives :	Yes
Artificial Sweeteners :	No

### Product suitability:

Suitable for a Vegetarian Diet :	Yes
Suitable for a Vegan Diet :	No
Suitable for Sufferers of Lactose Intolerance :	No
Suitable for Coeliacs :	No
Approved for a Halal Diet :	No
Approved for a Kosher Diet :	No
HFSS (High in Fat, Salt and Sugar) :	Yes

### Allergen Statement :

Allergy Advice. For allergens see ingredients in bold. Also may contain nuts.

## Nutritional Information

Average Serving :	29.00 g or ml
Count per 100g :	Not specified.
Count Per Pack :	Not specified.
Energy per 100 G/ML :	1,702.00 kJ
Energy per 100 G/ML :	404.00 kcal
Fat per 100 G/ML :	10 g
- of which Saturates per 100 G/ML :	5.6 g
- of which Mono-unsaturates per 100 G/ML :	Not specified.
- of which Polyunsaturates per 100 G/ML :	Not specified.
Trans Fats per 100 G\ML :	Not specified.
Carbohydrate Per 100 G/ML :	69 g
- of which Sugars per 100 G/ML :	27 g
- of which Polyols per 100 G/ML :	Not specified.
- of which Starch per 100 G/ML :	Not specified.
Fibre per 100 G/ML :	8 g
Protein per 100 G/ML :	5.6 g
Salt per 100 G/ML :	0.15 g
Sodium per 100 G\ML :	0.06 g

## Waste Packaging Weight - Inner Unit

Glass :	0.00 g
Plastic :	0.67 g
Percentage Recycled Plastic :	Not specified.
Paper/Board :	0.00 g

## Accreditations / Certifications / Assurance Schemes

BRCGS Certified Production :	Yes
Red Tractor :	No
Fairtrade :	No
Marine Stewardship Council Certified (MSC) :	No
Organic :	No
SALSA (Safe & Local Supplier Approval) :	No
British Lion Mark :	No
RSPCA Assured :	No
LEAF Marque (Linking Environment and Farming) :	No
Rainforest Alliance :	No
Food for Life Supplier Scheme :	No
Quality Meat Scotland :	No
Farm Assured Welsh Livestock :	No
Northern Ireland Beef & Lamb Farm Quality Assurance Scheme :	No
Quality Standard Mark (Beef/Lamb) :	No
Roundtable of Sustainable Palm Oil (RSPO) :	No
School Approved (The Requirement for School Food Regulation 2014) :	No
IFS Food Standard :	No
Best Aquaculture Practices (BAP) Certification :	No
ISO 14001 (Environmental System) :	No
FSSC 22000 :	No

Vitamin A per 100g :	Not specified.
Vitamin C per 100g :	Not specified.
Folate/Folic Acid per 100g :	Not specified.
Calcium per 100g :	Not specified.
Iron per 100g :	Not specified.
Zinc per 100g :	Not specified.
Cholesterol per 100 G/ML (UK/FR) :	0.00 g
Non Milk Extrinsic Sugars per 100gm :	Not specified.
Alcoholic Strength %Vol :	Not specified.
Fat Percentage in Dry Matter per 100g :	Not specified.

Aluminium :	0.00 g
Steel :	0.00 g
Other :	0.00 g

<b>Other Accreditation :</b> N/A	
Intra Stat/Taric Code :	Not specified.
Commodity Code :	Not specified.
Identification/Health Marks :	Not specified.

## Standards Testing

Do you undertake trend analysis of  
microbiological results? : Yes

Is shelf life testing undertaken? : Yes

## Microbiological Standards

Not available.

## Analytical Standards

Not available.