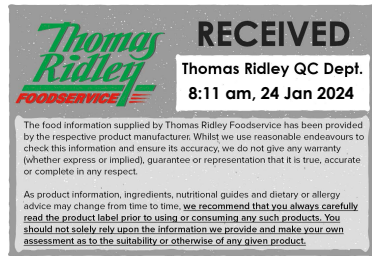


Changed Jan 22, 2024 14:31

Reviewed Jan 22, 2024 14:31

Erudus ID fd3a1f342bf340a1936787c1ab6b7174

Version 2.0



Thomas Ridley
FOODSERVICE

RECEIVED
Thomas Ridley QC Dept.
8:11 am, 24 Jan 2024

The food information supplied by Thomas Ridley Foodservice has been provided by the respective product manufacturer. Whilst we use reasonable endeavours to check this information and ensure its accuracy, we do not give any warranty (whether express or implied), guarantee or representation that it is true, accurate or complete in any respect.

As product information, ingredients, nutritional guides and dietary or allergy advice may change from time to time, we recommend that you always carefully read the product label prior to using or consuming any such products. You should not solely rely upon the information we provide and make your own assessment as to the suitability or otherwise of any given product.



Dark Couverture Chocolate

DARK COUVERTURE CHOCOLATE 8 x 2.5kg

PRODUCT DESCRIPTION

FINEST BELGIAN 70% DARK COUVERTURE CHOCOLATE

Brand	Barry Callebaut Belgium NV & IBC Belgium
Manufacturer Product Code	70-30-38-E4-U71.
Product Type	Food
Product Category	Confectionery
Storage Type	Ambient
Erudus ID	fd3a1f342bf340a1936787c1ab6b7174
Specification Type	Generic



Inner Component GTIN	5410522512854
Outer Case GTIN	5410522512847



INGREDIENTS

Ingredient Declaration

Cocoa Mass 71.0%; Sugar 26.0%; Fat-reduced cocoa powder 2.0%; emulsifier **SOYA** lecithin <1%; Natural vanilla flavouring <1%;

ALLERGENS

Product Contains:

Celery/Celery	No	Mustard	No
Cereals Containing Gluten	No	Nuts (Tree)	No
Barley	No	Almond nuts	No
Oats	No	Brazil nuts	No
Rye	No	Cashew nuts	No
Wheat (including Spelt and Khorasan)	No	Hazelnuts	No
Crustacea	No	Macadamia (Queensland) nuts	No
Eggs	No	Pecan nuts	No
Fish	No	Pistachio nuts	No
Lupin	No	Walnuts	No
Milk	May Contain	Peanuts	No
Molluscs	No	Sesame Seeds	No
		Soybeans	Yes
		Sulphur Dioxide and Sulphites	No

Risk Source:

Milk (Risk Source)	Factory
---------------------------	---------

Additional Allergen Information

May contain Milk This product is made on shared lines that process products containing allergen ingredients and therefore may contain these allergens. The levels of cross contact allergens can vary. We strongly recommend our customers pass this allergen

information forward and include it on their own product labels, particularly products sold to consumers. We also advise our customers to take into account any local allergen content and labeling standards. For more information please contact your BC representative.

SUPPLEMENTARY
INGREDIENT
INFORMATION

Palm Oil	No	Alcoholic Strength %Vol (ABV)	0 % Vol
Hydrogenated Vegetable Oil/Fat	No		
GM Protein/DNA	No		

ADDITIVES

Product Contains:

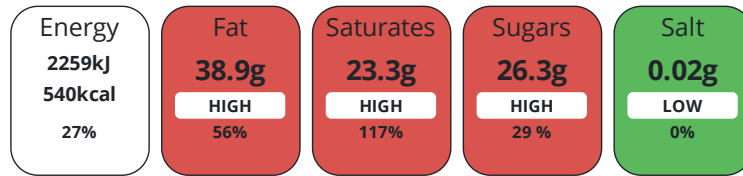
Artificial Antioxidants	No	Artificial Flavourings	No
Artificial Colours	No	Artificial Preservatives	No
Artificial Flavour Enhancers	No	Artificial Sweeteners	Yes

DIET
SUITABILITY

Vegan Diet	Suitable for	Vegetarian Diet	Suitable for
Halal Diet	Certified	Kosher Diet	Certified

NUTRITIONAL
INFORMATION

Each 100g/ml portion contains:



of your reference intake.

Typical values per 100g/ml : Energy 540kcal / 2259kJ

Nutrient	per 100g	RI per 100g	per 0.05g serving	RI per 0.05g serving
Energy (kJ)	2259 kJ	27%	1.1 kJ	0%
Energy (kcal)	540 kcal	27%	0.3 kcal	0%
Fat	38.9 g	56%	-	
of which Saturates	23.3 g	117%	-	
of which Mono-unsaturates	12.6 g		-	
of which Polyunsaturates	1.3 g		-	
Carbohydrate	30.8 g	12%	-	
of which Sugars	26.3 g	29%	-	
of which Polyols	0 g		-	
of which Starch	3.8 g		-	
Fibre	14 g		-	
Protein	8.8 g	18%	-	
Salt	0.02 g	0%	-	
Sodium	7.4 mg		-	
Serving Size	0.05 g			

VITAMINS AND MINERALS

Nutrient	per 100g	RI per 100g	per 0.05g serving	RI per 0.05g serving
Vitamin A	15.39 µg	2%	-	
Vitamin C	0 mg	0%	-	
Folate/Folic Acid	16.66 µg	8%	-	
Calcium	48.9 mg	6%	-	
Iron	20.89 mg	149%	-	
Zinc	2.47 mg	25%	-	

SUPPLEMENTARY NUTRITIONAL INFORMATION

Cholesterol per 100 g/ml (UK/FR)	0 g
Trans Fats per 100 g/ml	0 g

HANDLING & STORAGE INFORMATION

Directions For Use

Use as required

Storage Instructions

Ambient

Shelf Life from Time of Production	730 Days	Exempt From Shelf Life Labelling	No
------------------------------------	----------	----------------------------------	----

ACCREDITATIONS/ CERTIFICATIONS/ ASSURANCE SCHEMES



ORIGIN

Product Country of Origin/Place of Provenance	Belgium
---	---------

PRODUCT CHARACTERISTICS

Standards Testing			
Do you undertake trend analysis of microbiological results?	No	Is shelf life testing undertaken?	No

CONFIGURATION

Case Configuration	Inner Pack Configuration
Total Quantity of Inner Components in Outer Case	8 Units
Is the Outer Case Splittable?	Yes

PRODUCT WEIGHTS

Inner Component	
Variable Weight Consumer Item	Yes
Outer Case	
Outer Case Gross Weight	21.4 kg
Outer Case Net Weight	20 kg

PRODUCT DIMENSIONS

Inner Component	
Inner Component Depth	215 mm
Inner Component Width	120 mm
Inner Component Height	330 mm
Outer Case	
Outer Case Depth	520 mm
Outer Case Width	264 mm
Outer Case Height	330 mm

PALLET
INFORMATION

Quantity of Cases Per Pallet Layer	6 Cases	Pallet Height	0.14 MTR
Quantity of Layers Per Pallet	5 Layers	Pallet Gross Weight	640 kg
Quantity of Cases Per Pallet	30 Cases		

PACKAGING

Inner Component Packaging

Type	Materials	Weight	Recycled Plastic %	Recyclable	Returnable	Composite
Pack	Plastic	0.18 g	- %			

Outer Case Packaging

Type	Materials	Weight	Recycled Plastic %	Recyclable	Returnable	Composite
Case	Paper/Cardboard	0.7 g	- %			

OTHER
INFORMATION
CONTACT
INFORMATION

Address

Barry Callebaut Belgium NV & IBC Belgium
Barry Callebaut (UK) Ltd
Wildmere Road, Wildmere Ind Estate
Banbury
OX16 3UU
United Kingdom

The information on the [Erudus System](#) has been supplied by the manufacturers of the products and, whilst the owners of the Erudus System take steps to ensure the information is regularly updated, they give no warranty and no guarantee that the information is accurate. Product information and ingredients may change, please always read product labels carefully in addition to using the information provided by Erudus.

We do not accept liability for any inaccuracies or incorrect information contained on this site.
Please visit <http://www.erudus.com/terms-and-conditions> for full terms and conditions.