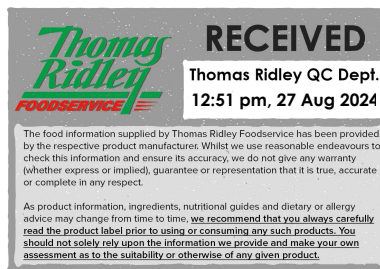


Changed Aug 21, 2024 13:27

Reviewed Aug 21, 2024 13:27

Erudus ID d0a4b1df98e843938bed03efd37846f0

Version 2.0



Thomas Ridley
FOODSERVICE

RECEIVED
Thomas Ridley QC Dept.
12:51 pm, 27 Aug 2024

The food information supplied by Thomas Ridley Foodservice has been provided by the respective product manufacturers. Whilst we use reasonable endeavours to check this information and ensure its accuracy, we do not give any warranty (whether express or implied), guarantee or representation that it is true, accurate or complete in any respect.

As product information, ingredients, nutritional guides and dietary or allergy advice may change from time to time, we recommend that you always carefully read the product label prior to using or consuming any such products. You should not solely rely upon the information we provide and make your own assessment as to the suitability or otherwise of any given product.



FA0220

27 TARTLET GLUTEN FREE NEUTRAL SG 8.5CM

Tarlet Neutral

PRODUCT DESCRIPTION

Neutral GLUTEN FREE ready to fill pastry case, 8.5cm in diameter

Brand	Pidy Limited
Manufacturer Product Code	749.01.027
Product Type	Food
Product Category	Pastry
Storage Type	Ambient
Erudus ID	d0a4b1df98e843938bed03efd37846f0
Specification Type	Bakery Products



Outer Case GTIN 3528960007527



INGREDIENTS

Ingredient Declaration

potato starch, palm fat, corn starch, rapeseedoil, sugar, whole EGG barn, EGG white powder, dextrose, water, rice flour, salt, coconut fat, caramelized sugar, thickeners E461 and E412, raising agent E450 and E500, emulsifiers E475 and E471, inulin

ALLERGENS

Product Contains:

Celery/Celeriac	No
Cereals Containing Gluten	No
Barley	No
Oats	No
Rye	No
Wheat (including Spelt and Khorasan)	No
Crustacea	No
Eggs	Yes
Fish	No
Lupin	No
Milk	May Contain
Molluscs	No

Mustard	No
Nuts (Tree)	No
Almond nuts	No
Brazil nuts	No
Cashew nuts	No
Hazelnuts	No
Macadamia (Queensland) nuts	No
Pecan nuts	No
Pistachio nuts	No
Walnuts	No
Peanuts	No
Sesame Seeds	No
Soybeans	No
Sulphur Dioxide and Sulphites	No

Risk Source:

Milk (Risk Source)	Line
--------------------	------

Additional Allergen Information

Contains EGG May contain traces of MILK

SUPPLEMENTARY
INGREDIENT
INFORMATION

Palm Oil	Yes
Hydrogenated Vegetable Oil/Fat	No
GM Protein/DNA	No

ADDITIVES

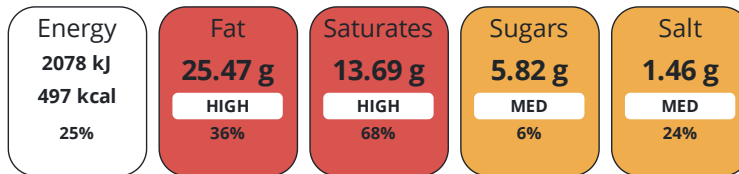
Product Contains:

DIET
SUITABILITY

Vegan Diet	No	Vegetarian Diet	Suitable for
Halal Diet	Suitable for	Kosher Diet	No

NUTRITIONAL
INFORMATION

Each 100g/ml portion contains:



of your reference intake.

Typical values per 100g/ml : Energy 497kcal / 2078kj

Nutrient	per 100g	RI per 100g	per 19g serving	RI per 19g serving
Energy (kJ)	2078 kJ	25%	394.8 kJ	5%
Energy (kcal)	497 kcal	25%	94.4 kcal	5%
Fat	25.47 g	36%	4.8 g	7%
of which Saturates	13.69 g	68%	2.6 g	13%
Carbohydrate	62.79 g	24%	11.9 g	5%
of which Sugars	5.82 g	6%	1.1 g	1%
Fibre	1.25 g		0.2 g	
Protein	3.42 g	7%	0.6 g	1%
Salt	1.46 g	24%	0.3 g	5%
Sodium	596 mg		113.2 mg	

Serving Size	19 g
Serving Size Description	1 piece
Number of Servings	27 Servings

SUPPLEMENTARY
NUTRITIONAL
INFORMATION

Trans Fats per 100 g/ml	0.06 g
--------------------------------	--------

HANDLING &
STORAGE
INFORMATION

Directions For Use

Ready to fill

Storage Instructions

Store in a dry place - ambient (10°C - 25°C).

Shelf Life from Time of Production	300 Days
---	----------

ACCREDITATIONS/
CERTIFICATIONS/
ASSURANCE
SCHEMES
ORIGIN

BRCGS Certified	IFS Food Standard
------------------------	--------------------------

Roundtable of Sustainable Palm Oil (RSPO)
--

Product Country of Origin/Place of	France
---	--------

Provenance

Additional Origin Details

BE,FR

PRODUCT
CHARACTERISTICS

Standards Testing

	Do you undertake trend analysis of microbiological results?	No		Is shelf life testing undertaken?	No		
	Microbiological Standards						
	Organism	Description	Frequency	Target	Maximum	Sample (g or ml)	
	Total Viable Count (TVC) (cfu/g or ml)		Annually	<1000	10000	400	
	Enterobacteriaceae (cfu/g or ml)		Annually	<10	100	400	
	Coliforms (cfu/g or ml)		Annually	<100	1000	400	
	E. Coli (cfu/g or ml)		Annually	<0	10	400	
	Staphylococcus Aureus (cfu/g or ml)		Annually	<20	100	400	
	Salmonella (cfu/g or ml)	/25g	Annually	<0	1	25	
	Yeast (cfu/g or ml)		Annually	<100	1500	400	
	Moulds (cfu/g or ml)		Annually	<100	1500	400	
	Physical Standards						
	Test	Description	Frequency	Target	Range	Sample (g or ml)	
	Weight (g)		Annually	<0.79	0 to 0.79	19	
CONFIGURATION	Case Configuration			Inner Pack Configuration			
	Total Quantity of Inner Components in Outer Case	27 Units					
	Is the Outer Case Splittable?	No					
PRODUCT WEIGHTS	Inner Component						
	Variable Weight Consumer Item	Yes					
	Outer Case						
	Outer Case Gross Weight	0.77 kg					
	Outer Case Net Weight	0.51 kg					
PRODUCT DIMENSIONS	Inner Component						
	Inner Component Depth	0 mm					
	Inner Component Width	0 mm					
	Inner Component Height	0 mm					
	Outer Case						
	Outer Case Depth	400 mm					
	Outer Case Width	300 mm					
	Outer Case Height	67 mm					
PALLET INFORMATION	Quantity of Cases Per Pallet Layer	8 Cases		Pallet Type	UK Standard Pallet		
	Quantity of Layers Per Pallet	25 Layers		Pallet Height	1.8 MTR		
	Quantity of Cases Per Pallet	200 Cases		Pallet Gross Weight	177.8 kg		
PACKAGING	Outer Case Packaging						
	Type	Materials	Weight	Recycled Plastic %	Recyclable	Returnable	Composite
	Case	Plastic	46 g	- %			
	Case	Paper/Cardboard	198 g	- %			
OTHER INFORMATION	Commodity Code	1905908000					

CONTACT
INFORMATION

Address

Pidy Limited
Pidy Production
32 Ave de menin
Halluin
59250

The information on the [Erudus System](#) has been supplied by the manufacturers of the products and, whilst the owners of the Erudus System take steps to ensure the information is regularly updated, they give no warranty and no guarantee that the information is accurate. Product information and ingredients may change, please always read product labels carefully in addition to using the information provided by Erudus.

We do not accept liability for any inaccuracies or incorrect information contained on this site.
Please visit <http://www.erudus.com/terms-and-conditions> for full terms and conditions.