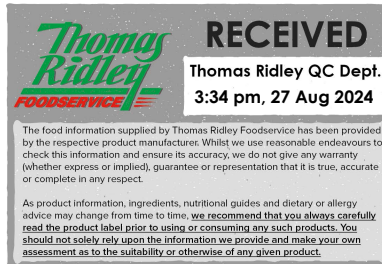


Changed Aug 23, 2024 10:53

Reviewed Aug 23, 2024 10:53

Erudus ID 8984f60273494797adc006fd1c3365dd

Version 2.0



Thomas Ridley QC Dept.
3:34 pm, 27 Aug 2024

The food information supplied by Thomas Ridley Foodservice has been provided by the respective product manufacturer. Whilst we use reasonable endeavours to check this information and ensure its accuracy, we do not give any warranty (whether express or implied), guarantee or representation that it is true, accurate or complete in any respect.

As product information, ingredients, nutritional guides and dietary or allergy advice may change from time to time, we recommend that you always carefully read the product label prior to using or consuming any such products. You should not solely rely upon the information we provide and make your own assessment as to the suitability or otherwise of any given product.



FA0222

72 QUICHE FEUILL SG 8.5 cm

Quiche Feuill

PRODUCT DESCRIPTION

Puff pastry product ready to fill

Brand	Pidy Limited
Manufacturer Product Code	750.20.072
Product Type	Food
Product Category	Pastry
Storage Type	Ambient
Erudus ID	8984f60273494797adc006fd1c3365dd
Specification Type	Bakery Products
Outer Case GTIN	0020176750301



INGREDIENTS

Ingredient Declaration

WHEAT flour (GLUTEN), Margarine (palmfat, water, rapeseed oil, emulsifier: E471. acid: E330, water, salt).

ALLERGENS

Product Contains:

Celery/Celeriac	No	Mustard	No
Cereals Containing Gluten	Yes	Nuts (Tree)	No
Barley	No	Almond nuts	No
Oats	No	Brazil nuts	No
Rye	No	Cashew nuts	No
Wheat (including Spelt and Khorasan)	Yes	Hazelnuts	No
Crustacea	No	Macadamia (Queensland) nuts	No
Eggs	May Contain	Pecan nuts	No
Fish	No	Pistachio nuts	No
Lupin	No	Walnuts	No
Milk	May Contain	Peanuts	No
Molluscs	No	Sesame Seeds	No
		Soybeans	No
		Sulphur Dioxide and Sulphites	No

Risk Source:

Eggs (Risk Source)	Factory	Milk (Risk Source)	Factory
---------------------------	---------	---------------------------	---------

Allergen Statement On Pack

Contains WHEAT flour (GLUTEN) May contain traces of MILK & EGGS

Additional Allergen Information

Contains WHEAT flour (GLUTEN) May contain traces of MILK & EGGS

SUPPLEMENTARY
INGREDIENT
INFORMATION

Palm Oil	Yes
Hydrogenated Vegetable Oil/Fat	Yes
GM Protein/DNA	No

ADDITIVES

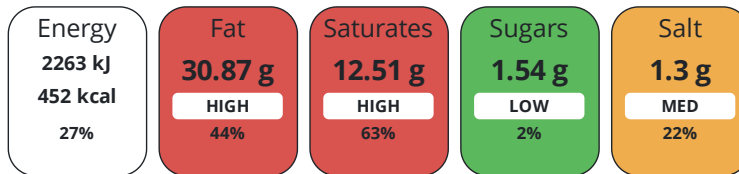
Product Contains:

DIET
SUITABILITY

Vegan Diet	No	Vegetarian Diet	Suitable for
Halal Diet	Suitable for	Kosher Diet	No

NUTRITIONAL
INFORMATION

Each 100g/ml portion contains:



of your reference intake.

Typical values per 100g/ml : Energy 452kcal / 2263kj

Nutrient	per 100g	RI per 100g	per 18.2g serving	RI per 18.2g serving
Energy (kJ)	2263 kJ	27%	411.9 kJ	5%
Energy (kcal)	452 kcal	23%	82.3 kcal	4%
Fat	30.87 g	44%	5.6 g	8%
of which Saturates	12.51 g	63%	2.3 g	12%
Carbohydrate	56.27 g	22%	10.2 g	4%
of which Sugars	1.54 g	2%	0.3 g	0%
Fibre	3.15 g		0.6 g	
Protein	8.17 g	16%	1.5 g	3%
Salt	1.3 g	22%	0.2 g	3%
Sodium	372 mg		67.7 mg	

Serving Size	18.2 g
Serving Size Description	1 piece
Number of Servings	72 Servings

SUPPLEMENTARY
NUTRITIONAL
INFORMATION

Trans Fats per 100 g/ml	0.14 g
--------------------------------	--------

HFSS (HIGH IN
FAT, SALT AND
SUGAR)
HANDLING &
STORAGE
INFORMATION

HFSS Status	Not Applicable (out of scope, exempt)
--------------------	---------------------------------------

Directions For Use

Bake filled at 170°C for 10-15mins dependant on filling. Serve hot or cold with sweet or savoury filling.

Storage Instructions

Store in a dry place - ambient (10°C - 25°C).

Shelf Life from Time of Production	510 Days
-------------------------------------------	----------

ACCREDITATIONS/
CERTIFICATIONS/
ASSURANCE
SCHEMES

BRCGS Certified	IFS Food Standard
Roundtable of Sustainable Palm Oil (RSPO)	Other Accreditation

ORIGIN	Product Country of Origin/Place of Provenance France						
PRODUCT CHARACTERISTICS	Additional Origin Details						
	France						
	Standards Testing						
	Do you undertake trend analysis of microbiological results?		No	Is shelf life testing undertaken?		No	
	Microbiological Standards						
	Organism	Description	Frequency	Target	Maximum	Sample (g or ml)	
	Coliforms (cfu/g or ml)		Annually	<100	1000	400	
	E. Coli (cfu/g or ml)		Annually	<0	10	400	
	Enterobacteriaceae (cfu/g or ml)		Annually	<10	100	400	
	Staphylococcus Aureus (cfu/g or ml)		Annually	<20	100	400	
Total Viable Count (TVC) (cfu/g or ml)		Annually	<1000	10000	400		
Salmonella (cfu/g or ml)	/25g	Annually	<0	1	25		
Yeast (cfu/g or ml)		Annually	<100	1500	400		
Moulds (cfu/g or ml)		Annually	<100	1500	400		
CONFIGURATION	Case Configuration		Inner Pack Configuration				
	Total Quantity of Inner Components in Outer Case		72 Units				
	Is the Outer Case Splittable?		No				
PRODUCT WEIGHTS	Inner Component						
	Variable Weight Consumer Item		Yes				
	Outer Case						
	Outer Case Gross Weight		1.73 kg				
Outer Case Net Weight		1.31 kg					
PRODUCT DIMENSIONS	Inner Component						
	Inner Component Depth		0 mm				
	Inner Component Width		0 mm				
	Inner Component Height		0 mm				
	Outer Case						
	Outer Case Depth		400 mm				
	Outer Case Width		300 mm				
	Outer Case Height		127 mm				
	PALLET INFORMATION	Quantity of Cases Per Pallet Layer		8 Cases		Pallet Type UK Standard Pallet	
		Quantity of Layers Per Pallet		15 Layers		Pallet Height 2.1 MTR	
Quantity of Cases Per Pallet		120 Cases		Pallet Gross Weight 217.53 kg			
Outer Case Packaging							
PACKAGING	Type	Materials	Weight	Recycled Plastic %	Recyclable	Returnable Composite	
	Paper/Polyethylene	Plastic	144 g	- %			
	Paper/Polyethylene	Paper/Cardboard	352 g	- %			

OTHER
INFORMATION

Commodity Code 1905908000

Manufacturer Comments

N/A

CONTACT
INFORMATION

Address

Pidy Limited

Unit 4 Sterling Business Park

Salthouse Road, Brackmills

Northampton

NN4 7EX

England

P: (Phone) 01604 705666

The information on the [Erudus System](#) has been supplied by the manufacturers of the products and, whilst the owners of the Erudus System take steps to ensure the information is regularly updated, they give no warranty and no guarantee that the information is accurate. Product information and ingredients may change, please always read product labels carefully in addition to using the information provided by Erudus.

We do not accept liability for any inaccuracies or incorrect information contained on this site.
Please visit <http://www.erudus.com/terms-and-conditions> for full terms and conditions.