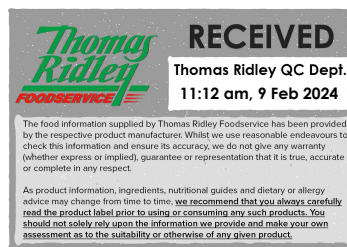


Changed Feb 08, 2024 00:00

Reviewed Feb 07, 2024 13:13

Erudus ID e00f0bb64821480c87803e30ae86cbae

Version 2.0



# 144 QUICHE FEUILL SG 8.5CM

Quiche Feuill

## PRODUCT DESCRIPTION

Puff pastry product ready to fill for first course, main dish or dessert. Round in shape with a golden yellow colour with a crispy, crunch texture.

Brand	Pidy Limited
Manufacturer Product Code	750.20.144
Effective Date	Feb 7, 2024
Product Type	Food
Product Category	Pastry
Storage Type	Ambient
Erudus ID	e00f0bb64821480c87803e30ae86cbae
Specification Type	Bakery Products
Inner Component GTIN	0020176750608
Outer Case GTIN	0020176750608



## INGREDIENTS

### Ingredient Declaration

WHEAT flour (GLUTEN) (EU), margarine (palm fat, water, rapeseed oil, salt, emulsifier E471, acid E330), water, salt

## ALLERGENS

Product Contains:

<b>Celery/Celериac</b>	No	<b>Mustard</b>	No
<b>Cereals Containing Gluten</b>	Yes	<b>Nuts (Tree)</b>	No
<b>Barley</b>	No	<b>Almond nuts</b>	No
<b>Oats</b>	No	<b>Brazil nuts</b>	No
<b>Rye</b>	No	<b>Cashew nuts</b>	No
<b>Wheat (including Spelt and Khorasan)</b>	Yes	<b>Hazelnuts</b>	No
<b>Crustacea</b>	No	<b>Macadamia (Queensland) nuts</b>	No
<b>Eggs</b>	May Contain	<b>Pecan nuts</b>	No
<b>Fish</b>	No	<b>Pistachio nuts</b>	No
<b>Lupin</b>	No	<b>Walnuts</b>	No
<b>Milk</b>	May Contain	<b>Peanuts</b>	No
<b>Molluscs</b>	No	<b>Sesame Seeds</b>	No
		<b>Soybeans</b>	No
		<b>Sulphur Dioxide and Sulphites</b>	No
<i>Risk Source:</i>			
<b>Eggs (Risk Source)</b>	Line	<b>Milk (Risk Source)</b>	Line

### Additional Allergen Information

Contains WHEAT (GLUTEN) . May contain MILK

SUPPLEMENTARY  
INGREDIENT  
INFORMATION

<b>Palm Oil</b>	Yes
<b>Hydrogenated Vegetable Oil/Fat</b>	Yes
<b>GM Protein/DNA</b>	No

ADDITIVES

*Product Contains:*

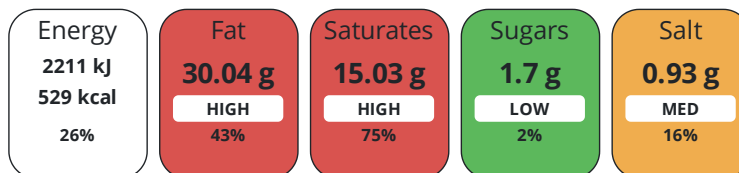
<b>Artificial Flavour Enhancers</b>	Yes
-------------------------------------	-----

DIET  
SUITABILITY

<b>Vegan Diet</b>	No	<b>Vegetarian Diet</b>	Suitable for
<b>Halal Diet</b>	Suitable for	<b>Kosher Diet</b>	No

NUTRITIONAL  
INFORMATION

Each 100g/ml portion contains:



of your reference intake.

Typical values per 100g/ml : Energy 529kcal / 2211kJ

Nutrient	per 100g	RI per 100g	per 18.2g serving	RI per 18.2g serving
<b>Energy (kJ)</b>	2211 kJ	26%	402.4 kJ	5%
<b>Energy (kcal)</b>	529 kcal	26%	96.3 kcal	5%
<b>Fat</b>	30.04 g	43%	5.5 g	8%
<b>of which Saturates</b>	15.03 g	75%	2.7 g	14%
<b>Carbohydrate</b>	54.54 g	21%	9.9 g	4%
<b>of which Sugars</b>	1.7 g	2%	0.3 g	0%
<b>Fibre</b>	3.4 g		0.6 g	
<b>Protein</b>	8.51 g	17%	1.5 g	3%
<b>Salt</b>	0.93 g	16%	0.2 g	3%
<b>Sodium</b>	372 mg		67.7 mg	

<b>Serving Size</b>	18.2 g
---------------------	--------

SUPPLEMENTARY  
NUTRITIONAL  
INFORMATION

<b>Trans Fats per 100 g/ml</b>	0.14 g
--------------------------------	--------

HANDLING &  
STORAGE  
INFORMATION

**Directions For Use**

Bake filled at 170°C for 10-15minutes depending on filling. Serve hot or cold and fill with sweet or savoury product.

**Storage Instructions**

Store in a dry place - ambient (10°C - 25°C).

<b>Shelf Life from Time of Production</b>	510 Days	<b>Exempt From Shelf Life Labelling</b>	No
---	----------	---	----

ACCREDITATIONS/  
CERTIFICATIONS/  
ASSURANCE  
SCHEMES



**Other Accreditation**

IFS higher level certificate

ORIGIN	<b>Product Country of Origin/Place of Provenance</b> France						
	<b>Additional Origin Details</b>		France				
PRODUCT CHARACTERISTICS	Standards Testing						
	<b>Do you undertake trend analysis of microbiological results?</b>	No	<b>Is shelf life testing undertaken?</b>		No		
CONFIGURATION	Case Configuration		Inner Pack Configuration				
	<b>Total Quantity of Inner Components in Outer Case</b>	144 Units					
	<b>Is the Outer Case Splittable?</b>	No					
PRODUCT WEIGHTS	Inner Component						
	<b>Variable Weight Consumer Item</b>	Yes					
	Outer Case						
	<b>Outer Case Gross Weight</b>	3.15 kg					
	<b>Outer Case Net Weight</b>	2.62 kg					
PRODUCT DIMENSIONS	Inner Component						
	<b>Inner Component Depth</b>	0 mm					
	<b>Inner Component Width</b>	0 mm					
	<b>Inner Component Height</b>	0 mm					
	Outer Case						
	<b>Outer Case Depth</b>	400 mm					
	<b>Outer Case Width</b>	300 mm					
	<b>Outer Case Height</b>	270 mm					
PALLET INFORMATION	<b>Non Palletised</b>	Yes					
PACKAGING	Outer Case Packaging						
	<b>Type</b>	<b>Materials</b>	<b>Weight</b>	<b>Recycled Plastic %</b>	<b>Recyclable</b>	<b>Returnable</b>	<b>Composite</b>
	Poly Treated PET/PE	Plastic	144 g	- %			
	Poly Treated PET/PE	Paper/Cardboard	360 g	- %			
OTHER INFORMATION	<b>Commodity Code</b>	1905908000					
	<b>Manufacturer Comments</b>		N/A				
CONTACT INFORMATION	Address						
	Pidy Limited						
	Unit 4 Sterling Business Park						
	Salhouse Road, Brackmills						
	Northampton						
	NN4 7EX						
	England						
	P: (Phone) 01604 705666						

The information on the [Erudus System](#) has been supplied by the manufacturers of the products and, whilst the owners of the Erudus System take steps to ensure the information is regularly updated, they give no warranty and no guarantee that the information is accurate. Product information and ingredients may change, please always read product labels carefully in addition to using the information provided by Erudus.

We do not accept liability for any inaccuracies or incorrect information contained on this site.  
Please visit <http://www.erudus.com/terms-and-conditions> for full terms and conditions.