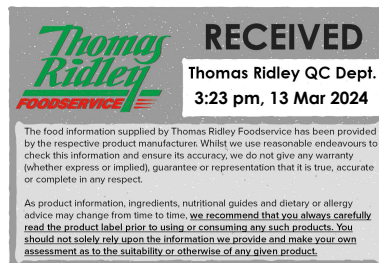


Changed Mar 13, 2024 00:00

Reviewed Mar 12, 2024 13:39

Erudus ID a6d8cf1d49e6452599c7c4c5ab09ae7c

Version 3.0



# 42 QUICHE FEUILL SG 11CM

Quiche Feuill

## PRODUCT DESCRIPTION

Puff pastry product ready to fill for first course, main dish or dessert. Round shape, golden yellow colour with a crispy, crunchy texture.

Brand	Pidy Limited
Manufacturer Product Code	760.00.042
Effective Date	Mar 12, 2024
Product Type	Food
Product Category	Pastry
Storage Type	Ambient
Erudus ID	a6d8cf1d49e6452599c7c4c5ab09ae7c
Specification Type	Bakery Products
Inner Component GTIN	0020176760607
Outer Case GTIN	0020176760607



## INGREDIENTS

### Ingredient Declaration

WHEAT flour (GLUTEN) (EU), margarine (palm fat, water, rapeseed oil, salt, emulsifier E471, acid E330), water, salt

### Ingredient Statements

Contains WHEAT flour (GLUTEN) May contain traces of MILK and EGG

## ALLERGENS

Product Contains:

<b>Celery/Celery</b>	No	<b>Mustard</b>	No
<b>Cereals Containing Gluten</b>	Yes	<b>Nuts (Tree)</b>	No
<b>Barley</b>	No	<b>Almond nuts</b>	No
<b>Oats</b>	No	<b>Brazil nuts</b>	No
<b>Rye</b>	No	<b>Cashew nuts</b>	No
<b>Wheat (including Spelt and Khorasan)</b>	Yes	<b>Hazelnuts</b>	No
<b>Crustacea</b>	No	<b>Macadamia (Queensland) nuts</b>	No
<b>Eggs</b>	May Contain	<b>Pecan nuts</b>	No
<b>Fish</b>	No	<b>Pistachio nuts</b>	No
<b>Lupin</b>	No	<b>Walnuts</b>	No
<b>Milk</b>	May Contain	<b>Peanuts</b>	No
<b>Molluscs</b>	No	<b>Sesame Seeds</b>	No
		<b>Soybeans</b>	No
		<b>Sulphur Dioxide and Sulphites</b>	No

Risk Source:

<b>Eggs (Risk Source)</b>	Line	<b>Milk (Risk Source)</b>	Line
---------------------------	------	---------------------------	------

### Allergen Statement On Pack

Contains WHEAT flour (GLUTEN)

**Additional Allergen Information**

May Contain EGG, MILK

SUPPLEMENTARY  
INGREDIENT  
INFORMATION

<b>Palm Oil</b>	Yes
<b>Hydrogenated Vegetable Oil/Fat</b>	No
<b>GM Protein/DNA</b>	No

## ADDITIVES

*Product Contains:*

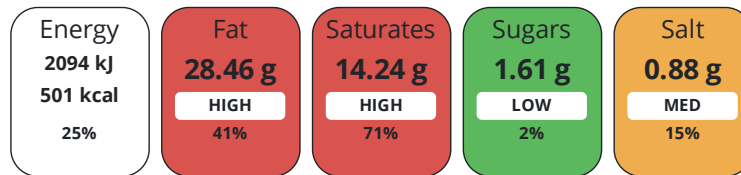
<b>Artificial Flavour Enhancers</b>	No
-------------------------------------	----

DIET  
SUITABILITY

<b>Vegan Diet</b>	No	<b>Vegetarian Diet</b>	Suitable for
<b>Halal Diet</b>	Suitable for	<b>Kosher Diet</b>	No

NUTRITIONAL  
INFORMATION

Each 100g/ml portion contains:



of your reference intake.

Typical values per 100g/ml : Energy 501kcal / 2094kj

Nutrient	per 100g	RI per 100g	per 46g serving	RI per 46g serving
<b>Energy (kJ)</b>	2094 kJ	25%	963.2 kJ	11%
<b>Energy (kcal)</b>	501 kcal	25%	230.5 kcal	12%
<b>Fat</b>	28.46 g	41%	13.1 g	19%
<b>of which Saturates</b>	14.24 g	71%	6.6 g	33%
<b>Carbohydrate</b>	51.66 g	20%	23.8 g	9%
<b>of which Sugars</b>	1.61 g	2%	0.7 g	1%
<b>Fibre</b>	3.22 g		1.5 g	
<b>Protein</b>	8.06 g	16%	3.7 g	7%
<b>Salt</b>	0.88 g	15%	0.4 g	7%
<b>Sodium</b>	352 mg		161.9 mg	

<b>Serving Size</b>	46 g
<b>Serving Size Description</b>	1 piece
<b>Number of Servings</b>	46 Servings

SUPPLEMENTARY  
NUTRITIONAL  
INFORMATION

<b>Trans Fats per 100 g/ml</b>	0.14 g
<b>Fibre Type</b>	Fibre Unknown

HFSS (HIGH IN  
FAT, SALT AND  
SUGAR)

<b>HFSS Status</b>	Not Applicable (out of scope, exempt)
--------------------	---------------------------------------

HANDLING &  
STORAGE  
INFORMATION

<b>Directions For Use</b>	Bake filled at 170 °C for 10 - 15mins dependent on filling. Serve hot or cold with sweet or savoury filling.
---------------------------	--

<b>Storage Instructions</b>	Store in a dry place - ambient (10°C - 25°C).
-----------------------------	---

<b>Storage Instructions After Opening</b>	Store in a dry place - ambient (10°C - 25°C) Out of direct sunlight
---	---

<b>Shelf Life from Time of Production</b>	510 Days	<b>Exempt From Shelf Life Labelling</b>	No
---	----------	---	----

ORIGIN

**Product Country of Origin/Place of** France

**Provenance**

**Additional Origin Details**

BE, DE, FR

PRODUCT  
CHARACTERISTICS

Standards Testing

**Do you undertake trend analysis of microbiological results?** No

**Is shelf life testing undertaken?** No

Microbiological Standards

Organism	Description	Frequency	Target	Maximum	Sample (g or ml)
Total Viable Count (TVC) (cfu/g or ml)	Total Viable Count (TVC)	Annually	<1000	10000	400
Enterobacteriaceae (cfu/g or ml)	Enterobacteriaceae	Annually	<10	100	400
Coliforms (cfu/g or ml)	Coliforms	Annually	<100	1000	400
E. Coli (cfu/g or ml)	E. Coli	Annually	<0	10	400
Salmonella (cfu/g or ml)	Salmonella	Annually	<0	0	400
Staphylococcus Aureus (cfu/g or ml)	Staphylococcus Aureus	Annually	<20	100	400
Yeast (cfu/g or ml)	Yeast	Annually	<100	500	400
Moulds (cfu/g or ml)	Moulds	Annually	<100	500	400

SUPPLEMENTARY INFORMATION

**Egg Source** Free-range

HAZARD CONTROLS

**Metal Detection** Yes

**Sieving** Yes

CONFIGURATION

Case Configuration

Inner Pack Configuration

**Variable Inner Components in Outer Case** No

**Total Quantity of Inner Components in Outer Case** 42 Units

**Outer Case**

**Is the Outer Case Splittable?** No

PRODUCT  
WEIGHTS

Inner Component

**Variable Weight Consumer Item** Yes

**Net Drained Weight** 45 g

Outer Case

**Outer Case Gross Weight** 2.66 kg

**Outer Case Net Weight** 1.93 kg

PRODUCT DIMENSIONS

Inner Component	
<b>Inner Component Depth</b>	33 mm
<b>Inner Component Width</b>	11 mm
<b>Inner Component Height</b>	33 mm
Outer Case	
<b>Outer Case Depth</b>	400 mm
<b>Outer Case Width</b>	300 mm
<b>Outer Case Height</b>	340 mm

PALLET INFORMATION

<b>Quantity of Cases Per Pallet Layer</b>	6 Cases	<b>Pallet Height</b>	2.19 MTR
<b>Quantity of Layers Per Pallet</b>	8 Layers	<b>Pallet Gross Weight</b>	136.58 kg
<b>Quantity of Cases Per Pallet</b>	48 Cases		

PACKAGING

Inner Component Packaging						
Type	Materials	Weight	Recycled Plastic %	Recyclable	Returnable	Composite
Bag	Plastic	0.11 g	0 %	No	No	No
Tray	Plastic	0.043 g	50 %	Yes	No	No
Outer Case Packaging						
Type	Materials	Weight	Recycled Plastic %	Recyclable	Returnable	Composite
Box	Paper/Cardboard	401 g	- %	Yes	No	No
Paper/Polyethylene	Paper/Cardboard	0.004 g	- %	No	No	No
Transport Packaging						
Type	Materials	Weight	Recycled Plastic %	Recyclable	Returnable	Composite
Pallet Wrap	Plastic	100 g	0 %	Yes	No	No

MARKETING INFORMATION

**Marketing Description**  
The go-to pastry case. Ready-to-fill with your choice of sweet or savoury filling.

OTHER INFORMATION

<b>Commodity Code</b>	1905908000	<b>Value Added Tax Rate</b>	No VAT
-----------------------	------------	-----------------------------	--------

**Manufacturer Comments**

N/A

CONTACT INFORMATION

Address  
Pidy Limited  
Unit 4 Sterling Business Park  
Salthouse Road, Brackmills  
Northampton  
NN4 7EX  
England

P. (Phone) 01604 705666

The information on the [Erudus System](#) has been supplied by the manufacturers of the products and, whilst the owners of the Erudus System take steps to ensure the information is regularly updated, they give no warranty and no guarantee that the information is accurate. Product information and ingredients may change, please always read product labels carefully in addition to using the information provided by Erudus.

We do not accept liability for any inaccuracies or incorrect information contained on this site.  
Please visit <http://www.erudus.com/terms-and-conditions> for full terms and conditions.