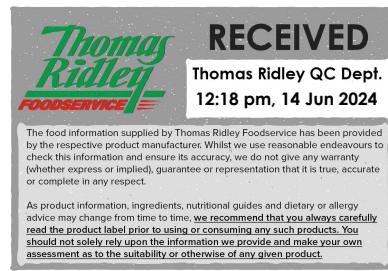


Changed Jun 14, 2024 09:07

Reviewed Jun 14, 2024 09:07

Erudus ID 9f568c2ccd824fcbb193ac207165f5d9

Version 2.0



FA0226

10 QUICHE FEUIL SG 18 CM + ALU

Quiche Feuil 10x23.8g

PRODUCT DESCRIPTION

Ready to fill Quiche case, supplied in an aluminium case.

Brand	Pidy Limited
Manufacturer Product Code	770.00.010
Product Type	Food
Product Category	Pastry
Storage Type	Ambient
Erudus ID	9f568c2ccd824fcbb193ac207165f5d9
Specification Type	Bakery Products
Outer Case GTIN	0020176770644



INGREDIENTS

Ingredient Declaration

WHEAT flour (GLUTEN), margarine (palm fat, water, rapeseed oil, emulsifier E471, acid E330), water, salt

ALLERGENS

Product Contains:

Celery/Celeriac	No	Mustard	No
Cereals Containing Gluten	Yes	Nuts (Tree)	No
Barley	No	Almond nuts	No
Oats	No	Brazil nuts	No
Rye	No	Cashew nuts	No
Wheat (including Spelt and Khorasan)	Yes	Hazelnuts	No
Crustacea	No	Macadamia (Queensland) nuts	No
Eggs	May Contain	Pecan nuts	No
Fish	No	Pistachio nuts	No
Lupin	No	Walnuts	No
Milk	May Contain	Peanuts	No
Molluscs	No	Sesame Seeds	No
		Soybeans	No
		Sulphur Dioxide and Sulphites	No

Risk Source:

Eggs (Risk Source)	Line	Milk (Risk Source)	Line
---------------------------	------	---------------------------	------

Allergen Statement On Pack

Contains WHEAT flour (GLUTEN) May contain traces of MILK and EGG

Additional Allergen Information

Contains WHEAT flour (GLUTEN) May contain traces of MILK and EGG

SUPPLEMENTARY
INGREDIENT
INFORMATION

Palm Oil	Yes
Hydrogenated Vegetable Oil/Fat	Yes
GM Protein/DNA	No

ADDITIVES

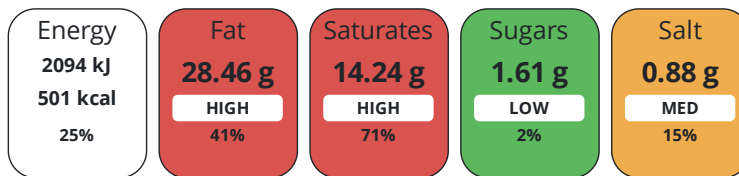
Product Contains:

DIET
SUITABILITY

Vegan Diet	No	Vegetarian Diet	Suitable for
Halal Diet	Suitable for	Kosher Diet	No

NUTRITIONAL
INFORMATION

Each 100g/ml portion contains:



of your reference intake.

Typical values per 100g/ml : Energy 501kcal / 2094kj

Nutrient	per 100g	RI per 100g	per 23.8g serving	RI per 23.8g serving
Energy (kJ)	2094 kJ	25%	498.4 kJ	6%
Energy (kcal)	501 kcal	25%	119.2 kcal	6%
Fat	28.46 g	41%	6.8 g	10%
of which Saturates	14.24 g	71%	3.4 g	17%
Carbohydrate	51.66 g	20%	12.3 g	5%
of which Sugars	1.61 g	2%	0.4 g	0%
Fibre	3.22 g		0.8 g	
Protein	8.06 g	16%	1.9 g	4%
Salt	0.88 g	15%	0.2 g	3%
Sodium	352 mg		83.8 mg	

Serving Size 23.8 g

Source of Nutritional Information Calculation based on known values of ingredients

SUPPLEMENTARY
NUTRITIONAL
INFORMATION

Trans Fats per 100 g/ml 0.14 g

HFSS (HIGH IN
FAT, SALT AND
SUGAR)

HFSS Status Yes

HANDLING &
STORAGE
INFORMATION

Directions For Use

Ready to fill from packing. Suitable for re-baking and savoury fillings.

Storage Instructions

Store in a dry place - ambient (10°C - 25°C).

Shelf Life from Time of Production 510 Days

ACCREDITATIONS/
CERTIFICATIONS/
ASSURANCE
SCHEMES
ORIGIN

BRCGS Certified **Roundtable of Sustainable Palm Oil (RSPO)**

Other Accreditation

Product Country of Origin/Place of France

Provenance

Additional Origin Details

France

PRODUCT CHARACTERISTICS

Standards Testing

Do you undertake trend analysis of microbiological results? No

Is shelf life testing undertaken? No

Microbiological Standards

Organism	Description	Frequency	Target	Maximum	Sample (g or ml)
Total Viable Count (TVC) (cfu/g or ml)		Annually	<1000	10000	400
Enterobacteriaceae (cfu/g or ml)		Annually	<10	100	400
Coliforms (cfu/g or ml)		Annually	<100	1000	400
E. Coli (cfu/g or ml)		Annually	<0	10	400
Salmonella (cfu/g or ml)	/25g	Annually	<0	1	400
Staphylococcus Aureus (cfu/g or ml)		Annually	<20	100	400
Yeast (cfu/g or ml)		Annually	<100	1500	400
Moulds (cfu/g or ml)		Annually	<100	1500	400

CONFIGURATION

Case Configuration

Inner Pack Configuration

Total Quantity of Inner Components in Outer Case 10 Units

Is the Outer Case Splittable? No

PRODUCT WEIGHTS

Inner Component

Variable Weight Consumer Item No

Inner Component Weight 23.8 g

Outer Case

Outer Case Gross Weight 1.18 kg

Outer Case Net Weight 0.85 kg

PRODUCT DIMENSIONS

Inner Component

Inner Component Depth 0 mm

Inner Component Width 0 mm

Inner Component Height 0 mm

Outer Case

Outer Case Depth 396 mm

Outer Case Width 206 mm

Outer Case Height 175 mm

PALLET INFORMATION

Quantity of Cases Per Pallet Layer 10 Cases

Pallet Height 1.9 MTR

Quantity of Layers Per Pallet 10 Layers

Pallet Gross Weight 140.6 kg

Quantity of Cases Per Pallet 100 Cases

PACKAGING

Outer Case Packaging

Type	Materials	Weight	Recycled Plastic %	Recyclable	Returnable	Composite
Case	Plastic	51 g	- %			
Case	Paper/Cardboard	195 g	- %			
Case	Aluminium	80 g	- %			

OTHER
INFORMATION

Commodity Code 1905908000

Manufacturer Comments

N/A

CONTACT
INFORMATION

Address

Pidy Limited
Unit 4 Sterling Business Park
Salthouse Road, Brackmills
Northampton
NN4 7EX
England

P: (Phone) 01604 705666

The information on the [Erudus System](#) has been supplied by the manufacturers of the products and, whilst the owners of the Erudus System take steps to ensure the information is regularly updated, they give no warranty and no guarantee that the information is accurate. Product information and ingredients may change, please always read product labels carefully in addition to using the information provided by Erudus.

We do not accept liability for any inaccuracies or incorrect information contained on this site.
Please visit <http://www.erudus.com/terms-and-conditions> for full terms and conditions.