

Changed Sep 12, 2024 09:08

Reviewed Sep 12, 2024 09:08

Erudus ID de3a6153e5db42409d8cb11dfddc87a5

Version 3.0

FA0244

135 SABLES STR.SIDED 8.5CM BUTTER

Rich Shortcrust Ready To Fill

PRODUCT DESCRIPTION

Ready to fill

Brand	Pidy Limited
Manufacturer Product Code	894.14.135
Product Type	Food
Product Category	Pastry
Storage Type	Ambient
Erudus ID	de3a6153e5db42409d8cb11dfddc87a5
Specification Type	Bakery Products
Outer Case GTIN	0020176894029



INGREDIENTS

Ingredient Declaration

WHEAT flour (GLUTEN) (EU), BUTTERfat (MILK) (EU) 22%, sugar, free range EGG (EGG), water, salt

ALLERGENS

Product Contains:

Celery/Celery	No	Mustard	No
Cereals Containing Gluten	Yes	Nuts (Tree)	No
Barley	No	Almond nuts	No
Oats	No	Brazil nuts	No
Rye	No	Cashew nuts	No
Wheat (including Spelt and Khorasan)	Yes	Hazelnuts	No
Crustacea	No	Macadamia (Queensland) nuts	No
Eggs	Yes	Pecan nuts	No
Fish	No	Pistachio nuts	No
Lupin	No	Walnuts	No
Milk	Yes	Peanuts	No
Molluscs	No	Sesame Seeds	No
		Soybeans	No
		Sulphur Dioxide and Sulphites	No

Allergen Statement On Pack

Contains WHEAT (GLUTEN), MILK, EGG

SUPPLEMENTARY INGREDIENT INFORMATION

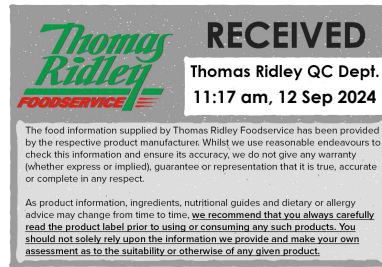
Palm Oil	No
Hydrogenated Vegetable Oil/Fat	No
GM Protein/DNA	No

ADDITIVES

Product Contains:

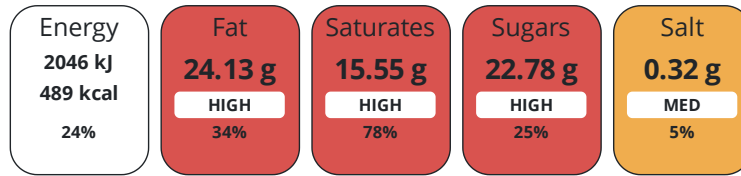
DIET SUITABILITY

Vegan Diet	No	Vegetarian Diet	Suitable for
Halal Diet	Suitable for	Kosher Diet	No



NUTRITIONAL
INFORMATION

Each 100g/ml portion contains:



of your reference intake.

Typical values per 100g/ml : Energy 489kcal / 2046kJ

Nutrient	per 100g	RI per 100g	per 23g serving	RI per 23g serving
Energy (kJ)	2046 kJ	24%	470.6 kJ	6%
Energy (kcal)	489 kcal	24%	112.5 kcal	6%
Fat	24.13 g	34%	5.5 g	8%
of which Saturates	15.55 g	78%	3.6 g	18%
Carbohydrate	60.39 g	23%	13.9 g	5%
of which Sugars	22.78 g	25%	5.2 g	6%
Fibre	2.09 g		0.5 g	
Protein	6.46 g	13%	1.5 g	3%
Salt	0.32 g	5%	0.1 g	2%

Serving Size	23 g
Serving Size Description	one serving = 1 PC (23,0 g)
Number of Servings	135 Servings

Source of Nutritional Information Calculation based on known values of ingredients

SUPPLEMENTARY
NUTRITIONAL
INFORMATION

HFSS (HIGH IN
FAT, SALT AND
SUGAR)
HANDLING &
STORAGE
INFORMATION

HFSS Status Not Applicable (out of scope, exempt)

Directions For Use

Ready to fill

Storage Instructions

Store in a dry place - ambient (10°C - 25°C)

Shelf Life from Time of Production 360 Days

ACCREDITATIONS/
CERTIFICATIONS/
ASSURANCE
SCHEMES

BRCGS Certified
ISO 9001:2015 (Quality Management Systems)

IFS Food Standard
Roundtable of Sustainable Palm Oil (RSPO)

Sedex

ORIGIN

Product Country of Origin/Place of France

Provenance

Additional Origin Details

WHEAT flour (GLUTEN) : BE, FR

PRODUCT
CHARACTERISTICS

Standards Testing

Do you undertake trend analysis of No
microbiological results?

Is shelf life testing undertaken? No

Microbiological Standards

Organism	Description	Frequency	Target	Maximum	Sample (g or ml)
Total Viable Count (TVC) (cfu/g or ml)		Annually	<1000	10000	400
Enterobacteriaceae (cfu/g or ml)		Annually	<10	100	400
Coliforms (cfu/g or ml)		Annually	<100	1000	400
E. Coli (cfu/g or ml)		Annually	<0	10	400
Salmonella (cfu/g or ml)	/25g	Annually	<0	0	25
Staphylococcus Aureus (cfu/g or ml)		Annually	<20	100	400
Yeast (cfu/g or ml)		Annually	<100	500	400
Moulds (cfu/g or ml)		Annually	<100	500	400

CONFIGURATION

Case Configuration	Inner Pack Configuration
Variable Inner Components in Outer Case	No
Total Quantity of Inner Components in Outer Case	135 Units
Is the Outer Case Splittable?	No

PRODUCT WEIGHTS

Inner Component	
Variable Weight Consumer Item	Yes
Outer Case	
Outer Case Gross Weight	3.74 kg
Outer Case Net Weight	3.11 kg

PRODUCT DIMENSIONS

Inner Component	
Inner Component Depth	0 mm
Inner Component Width	0 mm
Inner Component Height	0 mm
Outer Case	
Outer Case Depth	400 mm
Outer Case Width	300 mm
Outer Case Height	270 mm

PALLET INFORMATION

Quantity of Cases Per Pallet Layer	8 Cases	Pallet Type	UK Standard Pallet
Quantity of Layers Per Pallet	7 Layers	Pallet Height	2.04 MTR
Quantity of Cases Per Pallet	56 Cases	Pallet Gross Weight	232.16 kg

PACKAGING

Outer Case Packaging						
Type	Materials	Weight	Recycled Plastic %	Recyclable	Returnable	Composite
Paper/Polyethylene	Plastic	230 g	- %			
Paper/Polyethylene	Paper/Cardboard	360 g	- %			

OTHER INFORMATION

Manufacturer Comments
N/A

CONTACT
INFORMATION

Address

Pidy Limited
Unit 4 Sterling Business Park
Salthouse Road, Brackmills
Northampton
NN4 7EX
England

P. (Phone) 01604 705666

The information on the [Erudus System](#) has been supplied by the manufacturers of the products and, whilst the owners of the Erudus System take steps to ensure the information is regularly updated, they give no warranty and no guarantee that the information is accurate. Product information and ingredients may change, please always read product labels carefully in addition to using the information provided by Erudus.

We do not accept liability for any inaccuracies or incorrect information contained on this site.
Please visit <http://www.erudus.com/terms-and-conditions> for full terms and conditions.