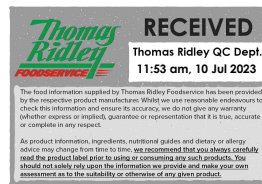


Supplier's Product Code :  
Product Added :  
Last Updated by Supplier :  
erudus id :

895.46.072  
24 October 2014  
18 August 2022  
8d7b9ba0832d4f81b86949a06f9f90f8



The information on the Erudus System has been supplied by the manufacturers of the products and, whilst the owners of the Erudus System take steps to ensure the information is regularly updated, they give no warranty and no guarantee that the information is accurate. Product information and ingredients may change, please always read product labels carefully in addition to using the information provided by Erudus One.

We do not accept liability for any inaccuracies or incorrect information contained on this site. Please visit <http://www.erudus.com/terms-and-conditions> for full terms and conditions.

## 72 SABLES 11cm SG

Short Product Name:  
RICH SHORTCRUST READY TO FILL

Product Description:  
Short crust product ready to garnish for dessert. Round in shape with a golden brown colour. The structure is crispy and crunchy.

### General Information

Food/Drink :	Food
Product Category :	Ambient
Generic Product Type :	Pastry

**Supplier's Product Code :**  
895.46.072  
**Supplier:** Pidy Limited  
Unit 4 Sterling Business Park  
Salthouse Road, Brackmills  
Northampton

NN4 7EX  
England  
P: 01604 705666

## OUTER PRODUCT

### Outer case Information

Outer Case GTIN :	0020176895620	Outer Case Length :	400 mm
Packaging Type Description :	Case	Outer Case Width :	300 mm
Total Quantity of Inner Units in Outer Case :	72 Units	Outer Case Height :	185 mm
Is Trade Item Splittable? :	No	Product Gross Weight :	3.30 kg
		Product Net Weight :	2.74 kg

### Pallet Information

Quantity of Cases Per Pallet Layer :	8 Cases	Pallet Height :	1.80 MTR
Quantity of Layers Per Pallet :	9 Layers	Pallet Gross Weight :	260.53 kg
Quantity of Cases Per Pallet :	72 Cases		

### Logistical Information

Shelf Life from Time of Production :	360 Days	Minimum Order Quantity :	72 Cases
Guaranteed Shelf Life on Delivery :	Not specified.	Delivery Lead Time :	7 Days

### Waste Packaging Weight - Outer Case

Glass :	0.00 g	Aluminium :	0.00 g
Plastic :	165.00 g	Steel :	0.00 g
Percentage Recycled Plastic :	50.00 %	Other :	0.00 g
Paper/Board :	361.00 g		

### Waste Packaging Weight - Transport Packaging

Plastic :	64.68 g	Wood Total :	Not specified.
Paper/Board :	141.51 g	Is Pallet Returnable? :	-
Percentage Recycled Plastic :	50.00 %		

### Other Information

Supplier Comments :	N/A
---------------------	-----

## INNER PRODUCT

### Origin Information

Product Country of Origin/Place of Provenance : France

Additional Origin Details :  
France

### Inner Pack Information

Internal GTIN : 0020176895620

Packaging Type Description : Poly Treated PET/PE

Variable Weight Consumer Item : No

Net Drained Weight : Not specified.

Inner Unit Length : 0 mm

Inner Unit Height : 0 mm

Inner Unit Width : 0 mm

Inner Product Weight : Not specified.

Inner Product Weight Units : g

Weight/Volume :  
0

### Handling Information

Directions For Use :  
Ready to fill from packaging. Can be filled 2 hours before use, dependant on filling.

Storage Instructions :  
Store in a dry place - ambient (10°C - 25°C).

## Dietary Information

### Ingredients :

WHEAT flour (GLUTEN) (EU), palm fat, sugar, rapeseedoil, free range EGG (EGG), water, coconut fat, salt, skimmed MILK powder

### Product contains:

GM Protein/DNA :	No
Celery/Celeriac (and products thereof) :	No
Lupin (and products thereof) :	No
Eggs (and products thereof) :	Yes
Fish (and products thereof) :	No
Soybeans (and products thereof) :	No
Milk (and products thereof) :	Yes
Mustard (and products thereof) :	No
Peanuts (and products thereof) :	No
Sesame Seeds (and products thereof) :	No
Crustacea (and products thereof) :	No
Molluscs (and products thereof) :	No
Nuts (and products thereof) :	No
Almond nuts :	No
Hazelnuts :	No
Walnuts :	No
Cashew nuts :	No
Pecan nuts :	No
Brazil nuts :	No
Pistachio nuts :	No
Macadamia nuts :	No
Queensland nuts :	No
Cereals Containing Gluten :	Yes
Wheat (and products thereof) :	Yes
Rye (and products thereof) :	No
Barley (and products thereof) :	No
Oats (and products thereof) :	No
Spelt (and products thereof) :	No
Kamut (and products thereof) :	No
Gluten content <20ppm :	-
Hydrogenated Vegetable Oil/Fat :	Yes
Palm Oil :	Yes
Sulphur Dioxide and Sulphites :	No
Sulphur Dioxide/Sulphites Concentration :	0

### Product contains :

Artificial Antioxidants :	-
Artificial Colours :	-
Artificial Flavourings :	-
Artificial Flavour Enhancers :	-
Artificial Preservatives :	-
Artificial Sweeteners :	-

### Product suitability:

Suitable for a Vegetarian Diet :	Yes
Suitable for a Vegan Diet :	No
Suitable for Sufferers of Lactose Intolerance :	No
Suitable for Coeliacs :	No
Approved for a Halal Diet :	Yes
Approved for a Kosher Diet :	No
HFSS (High in Fat, Salt and Sugar) :	-

### Allergen Statement :

Contains WHEAT (GLUTEN),EGG, MILK

## Nutritional Information

Average Serving :	38.00 g or ml
Count per 100g :	2.63 Pieces
Count Per Pack :	Not specified.
Energy per 100 G/ML :	2,066.00 kJ
Energy per 100 G/ML :	494.00 kcal
Fat per 100 G/ML :	25.25 g
- of which Saturates per 100 G/ML :	12.78 g
- of which Mono-unsaturates per 100 G/ML :	Not specified.
- of which Polyunsaturates per 100 G/ML :	Not specified.
Trans Fats per 100 G\ML :	0.24 g
Carbohydrate Per 100 G/ML :	59.08 g
- of which Sugars per 100 G/ML :	19.32 g
- of which Polyols per 100 G/ML :	Not specified.
- of which Starch per 100 G/ML :	Not specified.
Fibre per 100 G/ML :	2.21 g
Protein per 100 G/ML :	6.47 g
Salt per 100 G/ML :	0.33 g
Sodium per 100 G\ML :	0.132 g

Vitamin A per 100g :	Not specified.
Vitamin C per 100g :	Not specified.
Folate/Folic Acid per 100g :	Not specified.
Calcium per 100g :	Not specified.
Iron per 100g :	Not specified.
Zinc per 100g :	Not specified.
Cholesterol per 100 G/ML (UK/FR) :	Not specified.
Non Milk Extrinsic Sugars per 100gm :	Not specified.
Alcoholic Strength %Vol :	Not specified.
Fat Percentage in Dry Matter per 100g :	Not specified.

## Waste Packaging Weight - Inner Unit

Glass :	0.00 g
Plastic :	0.00 g
Percentage Recycled Plastic :	Not specified.
Paper/Board :	0.00 g

Aluminium :	0.00 g
Steel :	0.00 g
Other :	0.00 g

## Accreditations / Certifications / Assurance Schemes

BRCGS Certified Production :	Yes
Red Tractor :	No
Fairtrade :	No
Marine Stewardship Council Certified (MSC) :	No
Organic :	No
SALSA (Safe & Local Supplier Approval) :	No
British Lion Mark :	No
RSPCA Assured :	No
LEAF Marque (Linking Environment and Farming) :	No
Rainforest Alliance :	No
Food for Life Supplier Scheme :	No
Quality Meat Scotland :	No
Farm Assured Welsh Livestock :	No
Northern Ireland Beef & Lamb Farm Quality Assurance Scheme :	No
Quality Standard Mark (Beef/Lamb) :	No
Roundtable of Sustainable Palm Oil (RSPO) :	Yes
School Approved (The Requirement for School Food Regulation 2014) :	No
IFS Food Standard :	Yes
Best Aquaculture Practices (BAP) Certification :	No
ISO 14001 (Environmental System) :	No
FSSC 22000 :	No

<b>Other Accreditation :</b> IFS Higher level certificate	
Intra Stat/Taric Code :	Not specified.
Commodity Code :	1905907000
Identification/Health Marks :	Not specified.

## Standards Testing

Do you undertake trend analysis of microbiological results?: No

Is shelf life testing undertaken? : No

## Microbiological Standards

Organism	Frequency	Target	Maximum	Sample (g or ml)	Note
Coliforms (cfu/g or ml)	Annually	<100	1000	-	
E. Coli (cfu/g or ml)	Annually	<0	10	-	
Enterobacteriaceae (cfu/g or ml)	Annually	<10	100	-	
Moulds (cfu/g or ml)	Annually	<100	1500	-	
Salmonella	Annually	<0	1	-	/25g
Staphylococcus Aureus (cfu/g or ml)	Annually	<20	100	-	
Total Viable Count (TVC) (cfu/g or ml)	Annually	<1000	10000	-	
Yeast (cfu/g or ml)	Annually	<100	1500	-	

## Analytical Standards

Not available.