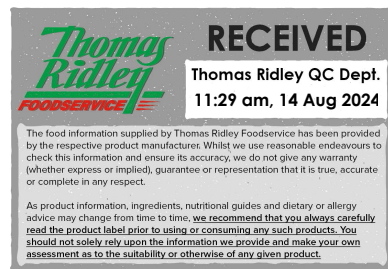


Changed Aug 13, 2024 09:44

Reviewed Aug 13, 2024 09:44

Erudus ID 992499a7a4a84fa8ace888410ada1a7c

Version 2.0



FA0250

# 10 SABLES 28CM SG

Sables

## PRODUCT DESCRIPTION

Short crust product ready to fill

Brand	Pidy Limited
Manufacturer Product Code	910.46.010
Product Type	Food
Product Category	Pastry
Storage Type	Ambient
Erudus ID	992499a7a4a84fa8ace888410ada1a7c
Specification Type	Bakery Products
Outer Case GTIN	0020176910637



## INGREDIENTS

### Ingredient Declaration

WHEAT flour (GLUTEN) (EU), palm fat, sugar, rapeseed oil, free range EGG (EGG), water, coconut fat, salt, skimmed MILK powder

## ALLERGENS

Product Contains:

<b>Celery/Celeriac</b>	No	<b>Mustard</b>	No
<b>Cereals Containing Gluten</b>	Yes	<b>Nuts (Tree)</b>	No
<b>Barley</b>	No	<b>Almond nuts</b>	No
<b>Oats</b>	No	<b>Brazil nuts</b>	No
<b>Rye</b>	No	<b>Cashew nuts</b>	No
<b>Wheat (including Spelt and Khorasan)</b>	Yes	<b>Hazelnuts</b>	No
<b>Crustacea</b>	No	<b>Macadamia (Queensland) nuts</b>	No
<b>Eggs</b>	Yes	<b>Pecan nuts</b>	No
<b>Fish</b>	No	<b>Pistachio nuts</b>	No
<b>Lupin</b>	No	<b>Walnuts</b>	No
<b>Milk</b>	Yes	<b>Peanuts</b>	No
<b>Molluscs</b>	No	<b>Sesame Seeds</b>	No
		<b>Soybeans</b>	No
		<b>Sulphur Dioxide and Sulphites</b>	No

### Allergen Statement On Pack

Contains WHEAT (GLUTEN) EGGS MILK

## SUPPLEMENTARY INGREDIENT INFORMATION

<b>Palm Oil</b>	Yes
<b>Hydrogenated Vegetable Oil/Fat</b>	Yes
<b>GM Protein/DNA</b>	No

## ADDITIVES

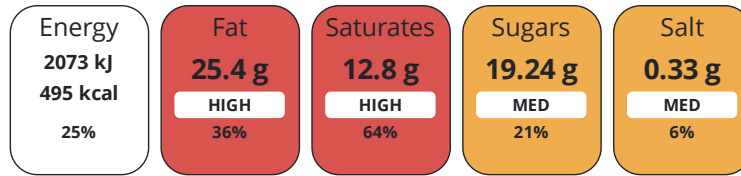
Product Contains:

## DIET SUITABILITY

<b>Vegan Diet</b>	No	<b>Vegetarian Diet</b>	Suitable for
<b>Halal Diet</b>	Suitable for	<b>Kosher Diet</b>	No

NUTRITIONAL  
INFORMATION

Each 100g/ml portion contains:



of your reference intake.

Typical values per 100g/ml : Energy 495kcal / 2073kJ

Nutrient	per 100g	RI per 100g	per 35g serving	RI per 35g serving
Energy (kJ)	2073 kJ	25%	725.6 kJ	9%
Energy (kcal)	495 kcal	25%	173.3 kcal	9%
Fat	25.4 g	36%	8.9 g	13%
of which Saturates	12.8 g	64%	4.5 g	23%
Carbohydrate	58.77 g	23%	20.6 g	8%
of which Sugars	19.24 g	21%	6.7 g	7%
Fibre	2.2 g		0.8 g	
Protein	6.81 g	14%	2.4 g	5%
Salt	0.33 g	6%	0.1 g	2%
Sodium	132 mg		46.2 mg	

Serving Size	35 g
Serving Size Description	1 piece

SUPPLEMENTARY  
NUTRITIONAL  
INFORMATION

Trans Fats per 100 g/ml	0.24 g
-------------------------	--------

HANDLING &  
STORAGE  
INFORMATION

Directions For Use

Ready to fill from packaging.

Storage Instructions

Store in a dry place - ambient (10°C - 25°C).

Shelf Life from Time of Production	360 Days
------------------------------------	----------

ACCREDITATIONS/  
CERTIFICATIONS/  
ASSURANCE  
SCHEMES  
ORIGIN

BRCGS Certified	
Other Accreditation	

Roundtable of Sustainable Palm Oil (RSPO)

Product Country of Origin/Place of Provenance	France
---	--------

Additional Origin Details

FR, BE

Standards Testing

PRODUCT  
CHARACTERISTICS

Do you undertake trend analysis of microbiological results?	No	Is shelf life testing undertaken?	No
---	----	-----------------------------------	----

Microbiological Standards

Organism	Description	Frequency	Target	Maximum	Sample (g or ml)
Coliforms (cfu/g or ml)		Annually	<100	1000	400
E. Coli (cfu/g or ml)		Annually	<0	10	400
Enterobacteriaceae (cfu/g or ml)		Annually	<10	100	400

Organism	Description	Frequency	Target	Maximum	Sample (g or ml)
Staphylococcus Aureus (cfu/g or ml)		Annually	<20	100	400
Total Viable Count (TVC) (cfu/g or ml)		Annually	<1000	10000	400
Salmonella (cfu/g or ml)	/25g	Annually	<0	1	25
Yeast (cfu/g or ml)		Annually	<100	1500	400
Moulds (cfu/g or ml)		Annually	<100	1500	400

CONFIGURATION

Case Configuration Inner Pack Configuration

**Total Quantity of Inner Components in Outer Case** 10 Units

**Is the Outer Case Splittable?** No

PRODUCT WEIGHTS

Inner Component

**Variable Weight Consumer Item** Yes

Outer Case

**Outer Case Gross Weight** 4.3 kg

**Outer Case Net Weight** 3.5 kg

PRODUCT DIMENSIONS

Inner Component

**Inner Component Depth** 0 mm

**Inner Component Width** 0 mm

**Inner Component Height** 0 mm

Outer Case

**Outer Case Depth** 400 mm

**Outer Case Width** 300 mm

**Outer Case Height** 310 mm

PALLET INFORMATION

**Quantity of Cases Per Pallet Layer** 8 Cases **Pallet Type** UK Standard Pallet

**Quantity of Layers Per Pallet** 6 Layers **Pallet Height** 2 MTR

**Quantity of Cases Per Pallet** 48 Cases **Pallet Gross Weight** 229.59 kg

PACKAGING

Outer Case Packaging

Type	Materials	Weight	Recycled Plastic %	Recyclable	Returnable	Composite
Case	Plastic	320 g	- %			
Case	Paper/Cardboard	447 g	- %			

OTHER INFORMATION

**Manufacturer Comments**

N/A

CONTACT INFORMATION

Address

Pidy Limited  
 Unit 4 Sterling Business Park  
 Salthouse Road, Brackmills  
 Northampton  
 NN4 7EX  
 England

P: (Phone) 01604 705666

The information on the [Erudus System](#) has been supplied by the manufacturers of the products and, whilst the owners of the Erudus System take steps to ensure the information is regularly updated, they give no warranty and no guarantee that the information is accurate. Product information and ingredients may change, please always read product labels carefully in addition to using the information provided by Erudus.

We do not accept liability for any inaccuracies or incorrect information contained on this site.  
Please visit <http://www.erudus.com/terms-and-conditions> for full terms and conditions.