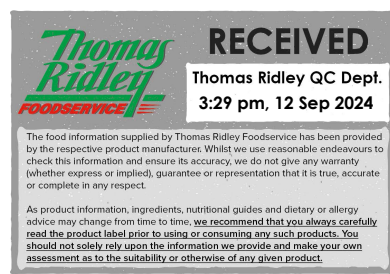


Changed Sep 12, 2024 11:54

Reviewed Sep 12, 2024 11:54

Erudus ID 55c0c6e926754ab5831aa621b8b985f9

Version 2.0



FA0562

112 MINI-CONES SESAME SEED

Mini Cone With Sweetener And Sesame Seeds

PRODUCT DESCRIPTION

Ready to fill

Brand	Pidy Limited
Manufacturer Product Code	508.79.112
Product Type	Food
Product Category	Pastry
Storage Type	Ambient
Erudus ID	55c0c6e926754ab5831aa621b8b985f9
Specification Type	Bakery Products
Outer Case GTIN	3528960009071



INGREDIENTS

Ingredient Declaration

WHEAT flour (GLUTEN), rice flour, sweetener: lactitol*, vegetable fat (coconut), SESAME seeds (6%), WHEAT GLUTEN, emulsifiers: E322 (sunflower) and E471, salt, antioxidant: E300.

*lactitol : an excessive consumption can cause laxative effects.

Ingredient Statements

May contain traces of MILK, NUTS, EGGS, SOY and MUSTARD

ALLERGENS

Product Contains:

Celery/Celeriac	No	Mustard	May Contain
Cereals Containing Gluten	Yes	Nuts (Tree)	May Contain
Barley	No	Almond nuts	May Contain
Oats	No	Brazil nuts	May Contain
Rye	No	Cashew nuts	May Contain
Wheat (including Spelt and Khorasan)	Yes	Hazelnuts	May Contain
Crustacea	No	Macadamia (Queensland) nuts	May Contain
Eggs	May Contain	Pecan nuts	May Contain
Fish	No	Pistachio nuts	May Contain
Lupin	No	Walnuts	May Contain
Milk	May Contain	Peanuts	No
Molluscs	No	Sesame Seeds	Yes
		Soybeans	May Contain
		Sulphur Dioxide and Sulphites	No

Risk Source:

Eggs (Risk Source)	Factory
Mustard (Risk Source)	Factory
Almond nuts (Risk Source)	Factory
Cashew nuts (Risk Source)	Factory
Macadamia nuts (Risk Source)	Factory
Pistachio nuts (Risk Source)	Factory
Soybeans (Risk Source)	Factory

Milk (Risk Source)	Line
Tree Nuts (Risk Source)	Factory
Brazil nuts (Risk Source)	Factory
Hazelnuts (Risk Source)	Factory
Pecan nuts (Risk Source)	Factory
Walnuts (Risk Source)	Factory

Allergen Statement On Pack

Contains WHEAT flour (GLUTEN), SESAME seeds

Additional Allergen Information

May contain traces of MILK, NUTS, EGGS, SOY and MUSTARD

SUPPLEMENTARY
INGREDIENT
INFORMATION

Palm Oil	No
Hydrogenated Vegetable Oil/Fat	No
GM Protein/DNA	No

ADDITIVES

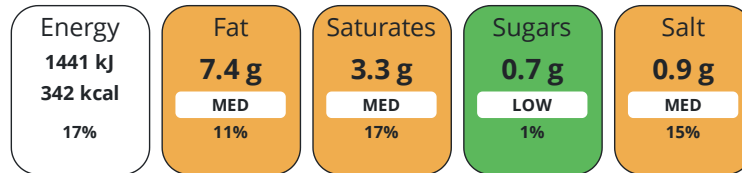
Product Contains:

DIET
SUITABILITY

Vegan Diet	No	Vegetarian Diet	Suitable for
Halal Diet	Suitable for	Kosher Diet	No

NUTRITIONAL
INFORMATION

Each 100g/ml portion contains:



of your reference intake.

Typical values per 100g/ml : Energy 342kcal / 1441kJ

Nutrient	per 100g	RI per 100g	per 3.8g serving	RI per 3.8g serving
Energy (kJ)	1441 kJ	17%	54.8 kJ	1%
Energy (kcal)	342 kcal	17%	13 kcal	1%
Fat	7.4 g	11%	0.3 g	0%
of which Saturates	3.3 g	17%	0.1 g	1%
Carbohydrate	71.5 g	28%	2.7 g	1%
of which Sugars	0.7 g	1%	-	-
Fibre	1.8 g	-	0.1 g	-
Protein	9 g	18%	0.3 g	1%
Salt	0.9 g	15%	-	-

Serving Size	3.8 g
Serving Size Description	one serving = (3,8 g)
Number of Servings	112 Servings

Source of Nutritional Information Calculation based on known values of ingredients

SUPPLEMENTARY
NUTRITIONAL
INFORMATION

HFSS (HIGH IN FAT, SALT AND SUGAR) HANDLING & STORAGE INFORMATION

HFSS Status Not Applicable (out of scope, exempt)

Directions For Use

Ready to fill

Storage Instructions

Store in a dry place - ambient (10°C - 25°C)

Shelf Life from Time of Production 360 Days

ACCREDITATIONS/ CERTIFICATIONS/ ASSURANCE SCHEMES

BRCGS Certified

ISO 9001:2015 (Quality Management Systems)

Sedex

IFS Food Standard

Roundtable of Sustainable Palm Oil (RSPO)

ORIGIN

Product Country of Origin/Place of Spain

Provenance

Standards Testing

PRODUCT CHARACTERISTICS

Do you undertake trend analysis of microbiological results? No

Is shelf life testing undertaken? No

Microbiological Standards

Organism	Description	Frequency	Target	Maximum	Sample (g or ml)
Enterobacteriaceae (cfu/g or ml)		Annually	<0	10	400
Staphylococcus Aureus (cfu/g or ml)		Annually	<0	10	400
Total Viable Count (TVC) (cfu/g or ml)		Annually	<1000	10000	400
Salmonella (cfu/g or ml)		Annually	<0	0	25

CONFIGURATION

Case Configuration

Inner Pack Configuration

Variable Inner Components in Outer Case No

Total Quantity of Inner Components in Outer Case 112 Units

Is the Outer Case Splittable? No

PRODUCT WEIGHTS

Inner Component

Variable Weight Consumer Item Yes

Outer Case

Outer Case Gross Weight 0.69 kg

Outer Case Net Weight 0.43 kg

PRODUCT DIMENSIONS

Inner Component

Inner Component Depth 400 mm

Inner Component Width 300 mm

Inner Component Height 67 mm

Outer Case

Outer Case Depth 400 mm

Outer Case Width 300 mm

Outer Case Height 67 mm

PALLET INFORMATION

Quantity of Cases Per Pallet Layer 8 Cases

Pallet Type UK Standard Pallet

Quantity of Layers Per Pallet 25 Layers

Pallet Height 1.82 MTR

Quantity of Cases Per Pallet 200 Cases

Pallet Gross Weight 160.2 kg

PACKAGING

Outer Case Packaging

Type	Materials	Weight	Recycled Plastic %	Recyclable	Returnable	Composite
Case	Plastic	152 g	- %			
Case	Paper/Cardboard	214 g	- %			

OTHER INFORMATION

Commodity Code 1905329900

CONTACT INFORMATION

Address

Pidy Limited
 Unit 4 Sterling Business Park
 Salthouse Road, Brackmills
 Northampton
 NN4 7EX
 England

P: (Phone) 01604 705666

The information on the [Erudus System](#) has been supplied by the manufacturers of the products and, whilst the owners of the Erudus System take steps to ensure the information is regularly updated, they give no warranty and no guarantee that the information is accurate. Product information and ingredients may change, please always read product labels carefully in addition to using the information provided by Erudus.

We do not accept liability for any inaccuracies or incorrect information contained on this site.
 Please visit <http://www.erudus.com/terms-and-conditions> for full terms and conditions.