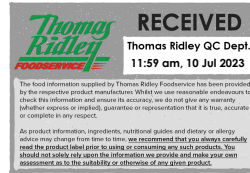


Supplier's Product Code : 510.93.024
 Product Added : 08 January 2016
 Last Updated by Supplier : 01 June 2022
 erudus id : 4592793aaf304ff9bb1b3570da378d2f



The information on the Erudus System has been supplied by the manufacturers of the products and, whilst the owners of the Erudus System take steps to ensure the information is regularly updated, they give no warranty and no guarantee that the information is accurate. Product information and ingredients may change, please always read product labels carefully in addition to using the information provided by Erudus One.

We do not accept liability for any inaccuracies or incorrect information contained on this site. Please visit <http://www.erudus.com/terms-and-conditions> for full terms and conditions.

24 TULIPES

Short Product Name:
TULIPES

Product Description:
Sweet Tulipe shape waffle dough - ready to fill

General Information

Food/Drink :	Food
Product Category :	Ambient
Generic Product Type :	Desserts

Supplier's Product Code :
510.93.024
Supplier: Pidy Limited
 Unit 4 Sterling Business Park
 Salthouse Road, Brackmills
 Northampton

 NN4 7EX
 England
 P: 01604 705666

OUTER PRODUCT

Outer case Information

Outer Case GTIN :	0020176510301	Outer Case Length :	250 mm
Packaging Type Description :	Case	Outer Case Width :	250 mm
Total Quantity of Inner Units in Outer Case :	24 Units	Outer Case Height :	100 mm
Is Trade Item Splittable? :	No	Product Gross Weight :	0.55 kg
		Product Net Weight :	0.29 kg

Pallet Information

Quantity of Cases Per Pallet Layer :	12 Cases	Pallet Height :	1.60 MTR
Quantity of Layers Per Pallet :	15 Layers	Pallet Gross Weight :	121.82 kg
Quantity of Cases Per Pallet :	180 Cases		

Logistical Information

Shelf Life from Time of Production :	330 Days	Minimum Order Quantity :	180 Cases
Guaranteed Shelf Life on Delivery :	Not specified.	Delivery Lead Time :	7 Days

Waste Packaging Weight - Outer Case

Glass :	0.00 g	Aluminium :	0.00 g
Plastic :	138.00 g	Steel :	0.00 g
Percentage Recycled Plastic :	Not specified.	Other :	0.00 g
Paper/Board :	352.00 g		

Waste Packaging Weight - Transport Packaging

Plastic :	Not specified.	Wood Total :	Not specified.
Paper/Board :	Not specified.	Is Pallet Returnable? :	No
Percentage Recycled Plastic :	Not specified.		

Other Information

Supplier Comments :	N/A
---------------------	-----

INNER PRODUCT

Origin Information

Product Country of Origin/Place of Provenance : Belgium

Additional Origin Details :
Belgium

Inner Pack Information

Internal GTIN : Not specified.

Packaging Type Description : N/A

Variable Weight Consumer Item : No

Net Drained Weight : Not specified.

Inner Unit Length : 0 mm

Inner Unit Height : 0 mm

Inner Unit Width : 0 mm

Inner Product Weight : Not specified.

Inner Product Weight Units : g

Weight/Volume :
N/A

Handling Information

Directions For Use :
Ready to fill with cold fillings.

Storage Instructions :
Store in a dry place - ambient (10°C - 25°C).

Dietary Information

Ingredients :

WHEAT flour (GLUTEN), sugar, rapeseed oil, emulsifiers E322 (SOY), potato starch, salt, vanilline

Product contains:

GM Protein/DNA :	No
Celery/Celeriac (and products thereof) :	No
Lupin (and products thereof) :	No
Eggs (and products thereof) :	May Contain
Fish (and products thereof) :	No
Soybeans (and products thereof) :	Yes
Milk (and products thereof) :	May Contain
Mustard (and products thereof) :	No
Peanuts (and products thereof) :	May Contain
Sesame Seeds (and products thereof) :	No
Crustacea (and products thereof) :	No
Molluscs (and products thereof) :	No
Nuts (and products thereof) :	May Contain
Almond nuts :	May Contain
Hazelnuts :	May Contain
Walnuts :	May Contain
Cashew nuts :	May Contain
Pecan nuts :	May Contain
Brazil nuts :	May Contain
Pistachio nuts :	May Contain
Macadamia nuts :	May Contain
Queensland nuts :	May Contain
Cereals Containing Gluten :	Yes
Wheat (and products thereof) :	Yes
Rye (and products thereof) :	No
Barley (and products thereof) :	No
Oats (and products thereof) :	No
Spelt (and products thereof) :	No
Kamut (and products thereof) :	No
Gluten content <20ppm :	-
Hydrogenated Vegetable Oil/Fat :	No
Palm Oil :	No
Sulphur Dioxide and Sulphites :	No
Sulphur Dioxide/Sulphites Concentration :	0

Product contains :

Artificial Antioxidants :	-
Artificial Colours :	-
Artificial Flavourings :	-
Artificial Flavour Enhancers :	-
Artificial Preservatives :	-
Artificial Sweeteners :	-

Product suitability:

Suitable for a Vegetarian Diet :	Yes
Suitable for a Vegan Diet :	No
Suitable for Sufferers of Lactose Intolerance :	No
Suitable for Coeliacs :	No
Approved for a Halal Diet :	No
Approved for a Kosher Diet :	No
HFSS (High in Fat, Salt and Sugar) :	Yes

Allergen Statement :

Contains WHEAT flour (GLUTEN), SOY)

May Contain EGGS, MILK, NUT, PEANUTS

Nutritional Information

Average Serving :	11.00 g or ml
Count per 100g :	9 Pieces
Count Per Pack :	Not specified.
Energy per 100 G/ML :	1,745.00 kJ
Energy per 100 G/ML :	413.00 kcal
Fat per 100 G/ML :	5.75 g
- of which Saturates per 100 G/ML :	0.6 g
- of which Mono-unsaturates per 100 G/ML :	Not specified.
- of which Polyunsaturates per 100 G/ML :	Not specified.
Trans Fats per 100 G\ML :	0.02 g
Carbohydrate Per 100 G/ML :	81.6 g
- of which Sugars per 100 G/ML :	36.6 g
- of which Polyols per 100 G/ML :	Not specified.
- of which Starch per 100 G/ML :	Not specified.
Fibre per 100 G/ML :	2.8 g
Protein per 100 G/ML :	7.1 g
Salt per 100 G/ML :	0.7 g
Sodium per 100 G\ML :	0.28 g

Vitamin A per 100g :	Not specified.
Vitamin C per 100g :	Not specified.
Folate/Folic Acid per 100g :	Not specified.
Calcium per 100g :	Not specified.
Iron per 100g :	Not specified.
Zinc per 100g :	Not specified.
Cholesterol per 100 G/ML (UK/FR) :	Not specified.
Non Milk Extrinsic Sugars per 100gm :	Not specified.
Alcoholic Strength %Vol :	Not specified.
Fat Percentage in Dry Matter per 100g :	Not specified.

Waste Packaging Weight - Inner Unit

Glass :	0.00 g
Plastic :	33.00 g
Percentage Recycled Plastic :	Not specified.
Paper/Board :	0.00 g

Aluminium :	0.00 g
Steel :	0.00 g
Other :	0.00 g

Accreditations / Certifications / Assurance Schemes

BRCGS Certified Production :	No
Red Tractor :	No
Fairtrade :	No
Marine Stewardship Council Certified (MSC) :	No
Organic :	No
SALSA (Safe & Local Supplier Approval) :	No
British Lion Mark :	No
RSPCA Assured :	No
LEAF Marque (Linking Environment and Farming) :	No
Rainforest Alliance :	No
Food for Life Supplier Scheme :	No
Quality Meat Scotland :	No
Farm Assured Welsh Livestock :	No
Northern Ireland Beef & Lamb Farm Quality Assurance Scheme :	No
Quality Standard Mark (Beef/Lamb) :	No
Roundtable of Sustainable Palm Oil (RSPO) :	No
School Approved (The Requirement for School Food Regulation 2014) :	No
IFS Food Standard :	No
Best Aquaculture Practices (BAP) Certification :	No
ISO 14001 (Environmental System) :	No
FSSC 22000 :	No

Other Accreditation :	N/A
Intra Stat/Taric Code :	Not specified.
Commodity Code :	Not specified.
Identification/Health Marks :	Not specified.

Standards Testing

Do you undertake trend analysis of microbiological results?: No

Is shelf life testing undertaken?: No

Microbiological Standards

Organism	Frequency	Target	Maximum	Sample (g or ml)	Note
Coliforms (cfu/g or ml)	Annually	<100	1000	-	
E. Coli (cfu/g or ml)	Annually	<0	10	-	
Enterobacteriaceae (cfu/g or ml)	Annually	<10	100	-	
Salmonella	Annually	<0	1	-	/25g
Staphylococcus Aureus (cfu/g or ml)	Annually	<20	100	-	
Total Viable Count (TVC) (cfu/g or ml)	Annually	<1000	10000	-	

Analytical Standards

Not available.