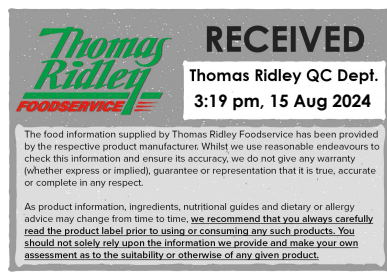


Changed Aug 14, 2024 13:04

Reviewed Aug 14, 2024 13:04

Erudus ID 69e7347d38514077a54691e60298cddd

Version 2.0



FA0751

108 SABLES 9.5CM SG

Sables

PRODUCT DESCRIPTION

Short crust product ready to garnish for dessert. Round in shape with a golden brown colour. The structure is crunchy, can also re bake.

Brand	Pidy Limited
Manufacturer Product Code	892.46.108
Product Type	Food
Product Category	Pastry
Storage Type	Ambient
Erudus ID	69e7347d38514077a54691e60298cddd
Specification Type	Bakery Products

Outer Case GTIN 0020176892629



INGREDIENTS

Ingredient Declaration

WHEAT flour (GLUTEN) (EU), palm fat SG, sugar, rapeseed oil, free range EGG, water, coconut fat, salt, skimmed MILK powder

ALLERGENS

Product Contains:

Celery/Celeriac	No	Mustard	No
Cereals Containing Gluten	Yes (<20ppm)	Nuts (Tree)	No
Barley	No	Almond nuts	No
Oats	No	Brazil nuts	No
Rye	No	Cashew nuts	No
Wheat (including Spelt and Khorasan)	Yes (<20ppm)	Hazelnuts	No
Crustacea	No	Macadamia (Queensland) nuts	No
Eggs	Yes	Pecan nuts	No
Fish	No	Pistachio nuts	No
Lupin	No	Walnuts	No
Milk	Yes	Peanuts	No
Molluscs	No	Sesame Seeds	No
		Soybeans	No
		Sulphur Dioxide and Sulphites	No

Allergen Statement On Pack

Contains WHEAT (GLUTEN), EGG, MILK

Additional Allergen Information

Contains WHEAT (GLUTEN), EGG, MILK

SUPPLEMENTARY INGREDIENT INFORMATION

Palm Oil	Yes
Hydrogenated Vegetable Oil/Fat	Yes
GM Protein/DNA	No

ADDITIVES

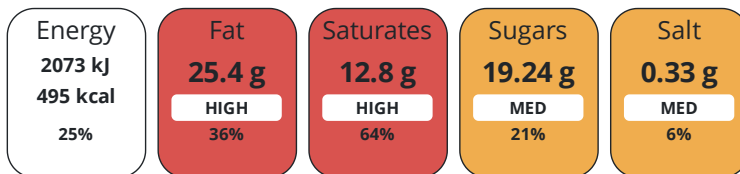
Product Contains:

DIET
SUITABILITY

Vegan Diet	No	Vegetarian Diet	Suitable for
Halal Diet	Suitable for	Kosher Diet	No

NUTRITIONAL
INFORMATION

Each 100g/ml portion contains:



of your reference intake.

Typical values per 100g/ml : Energy 495kcal / 2073kj

Nutrient	per 100g	RI per 100g	per 31g serving	RI per 31g serving
Energy (kJ)	2073 kJ	25%	642.6 kJ	8%
Energy (kcal)	495 kcal	25%	153.5 kcal	8%
Fat	25.4 g	36%	7.9 g	11%
of which Saturates	12.8 g	64%	4 g	20%
Carbohydrate	58.77 g	23%	18.2 g	7%
of which Sugars	19.24 g	21%	6 g	7%
Fibre	2.2 g		0.7 g	
Protein	6.81 g	14%	2.1 g	4%
Salt	0.33 g	6%	0.1 g	2%
Sodium	132 mg		40.9 mg	

Serving Size	31 g
Serving Size Description	1 piece
Number of Servings	108 Servings

SUPPLEMENTARY
NUTRITIONAL
INFORMATION

Trans Fats per 100 g/ml	0.24 g
--------------------------------	--------

HANDLING &
STORAGE
INFORMATION

Directions For Use

Ready to fill

Storage Instructions

Store in a dry place - ambient (10 - 25c)

Shelf Life from Time of Production	365 Days
---	----------

ACCREDITATIONS/
CERTIFICATIONS/
ASSURANCE
SCHEMES
ORIGIN

BRCGS Certified	
------------------------	--

Roundtable of Sustainable Palm Oil (RSPO)	
--	--

Product Country of Origin/Place of	France
---	--------

Provenance

Additional Origin Details

FR,BE

PRODUCT
CHARACTERISTICS

Standards Testing	
--------------------------	--

Do you undertake trend analysis of microbiological results?	No
--	----

Is shelf life testing undertaken?	No
--	----

Microbiological Standards

Organism	Description	Frequency	Target	Maximum	Sample (g or ml)
Total Viable Count (TVC) (cfu/g or ml)		Annually	<1000	10000	400
Enterobacteriaceae (cfu/g or ml)		Annually	<10	100	400
Coliforms (cfu/g or ml)		Annually	<100	1000	400
E. Coli (cfu/g or ml)		Annually	<10	10	400
Salmonella (cfu/g or ml)		Annually	<0	0	25
Staphylococcus Aureus (cfu/g or ml)		Annually	<20	100	400

CONFIGURATION

Case Configuration Inner Pack Configuration

Total Quantity of Inner Components in 108 Units

Outer Case

Is the Outer Case Splittable? No

PRODUCT WEIGHTS

Inner Component

Variable Weight Consumer Item Yes

Outer Case

Outer Case Gross Weight 3.89 kg

Outer Case Net Weight 3.35 kg

PRODUCT DIMENSIONS

Inner Component

Inner Component Depth 0 mm

Inner Component Width 0 mm

Inner Component Height 0 mm

Outer Case

Outer Case Depth 400 mm

Outer Case Width 300 mm

Outer Case Height 225 mm

PALLET INFORMATION

Quantity of Cases Per Pallet Layer 8 Cases **Pallet Type** UK Standard Pallet

Quantity of Layers Per Pallet 6 Layers **Pallet Height** 1.5 MTR

Quantity of Cases Per Pallet 48 Cases **Pallet Gross Weight** 195.91 kg

PACKAGING

Inner Component Packaging

Type	Materials	Weight	Recycled Plastic %	Recyclable	Returnable	Composite
Poly Treated PET/PE	Plastic	0.23 g	- %			

Outer Case Packaging

Type	Materials	Weight	Recycled Plastic %	Recyclable	Returnable	Composite
Case	Plastic	168 g	- %			
Case	Paper/Cardboard	336 g	- %			

OTHER INFORMATION

Commodity Code 1905907000

Manufacturer Comments

N/A

CONTACT
INFORMATION

Address

Pidy Limited
Unit 4 Sterling Business Park
Salthouse Road, Brackmills
Northampton
NN4 7EX
England

P. (Phone) 01604 705666

The information on the [Erudus System](#) has been supplied by the manufacturers of the products and, whilst the owners of the Erudus System take steps to ensure the information is regularly updated, they give no warranty and no guarantee that the information is accurate. Product information and ingredients may change, please always read product labels carefully in addition to using the information provided by Erudus.

We do not accept liability for any inaccuracies or incorrect information contained on this site.
Please visit <http://www.erudus.com/terms-and-conditions> for full terms and conditions.