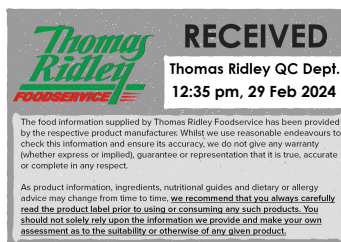


Changed Feb 29, 2024 12:15

Reviewed Feb 29, 2024 12:15

Erudus ID d164ee792aae4bd5badd1390275d7d0d

Version 2.0



FA0819

# INSTANT POWDER FOR WHITE CHOCOLATE MOUSSE

Instant Powder For White Chocolate Mousse 10x800g

## PRODUCT DESCRIPTION

Rich in white chocolate and ready in 1, 2, 3. Nothing beats homemade chocolate mousse. But with White Chocolate Mousse Powder you have a great-tasting alternative at your fingertips.

<b>Brand</b>	Barry Callebaut Belgium NV & IBC Belgium
<b>Manufacturer Product Code</b>	CHW-MO-W-E0-X27
<b>Product Type</b>	Food
<b>Product Category</b>	Confectionery
<b>Storage Type</b>	Ambient
<b>Erudus ID</b>	d164ee792aae4bd5badd1390275d7d0d
<b>Specification Type</b>	Generic



© Barry Callebaut

Inner Component GTIN 5410522546033

Outer Case GTIN 5410522546026



## INGREDIENTS

### Ingredient Declaration

White chocolate 58.5%,(sugar 45.5%,whole MILK powder 23.0%,cocoa butter 21.0%,skimmed MILK powder 10.5%,emulsifier SOYA lecithin <1%,natural vanilla flavouring <1%),skimmed MILK powder 16.5%,sugar 10.5%,fully hydrogenated vegetable fat (palm kernel) 10.0%,MILK proteins 1.5%,emulsifier mono and diglycerides of fatty acids 1.5%,emulsifier E472a 1.5%,stabiliser E340ii <1%,colour E160a <1%

## ALLERGENS

Product Contains:

<b>Celery/Celeryiac</b>	No	<b>Mustard</b>	No
<b>Cereals Containing Gluten</b>	No	<b>Nuts (Tree)</b>	No
<b>Barley</b>	No	<b>Almond nuts</b>	No
<b>Oats</b>	No	<b>Brazil nuts</b>	No
<b>Rye</b>	No	<b>Cashew nuts</b>	No
<b>Wheat (including Spelt and Khorasan)</b>	No	<b>Hazelnuts</b>	No
<b>Crustacea</b>	No	<b>Macadamia (Queensland) nuts</b>	No
<b>Eggs</b>	No	<b>Pecan nuts</b>	No
<b>Fish</b>	No	<b>Pistachio nuts</b>	No
<b>Lupin</b>	No	<b>Walnuts</b>	No
<b>Milk</b>	Yes	<b>Peanuts</b>	No
<b>Molluscs</b>	No	<b>Sesame Seeds</b>	No
		<b>Soybeans</b>	Yes
		<b>Sulphur Dioxide and Sulphites</b>	No

**Additional Allergen Information**

CONTAINS MILK

SUPPLEMENTARY  
INGREDIENT  
INFORMATION

<b>Hydrogenated Vegetable Oil/Fat</b>	Yes	<b>Alcoholic Strength %Vol (ABV)</b>	0 % Vol
<b>GM Protein/DNA</b>	No		

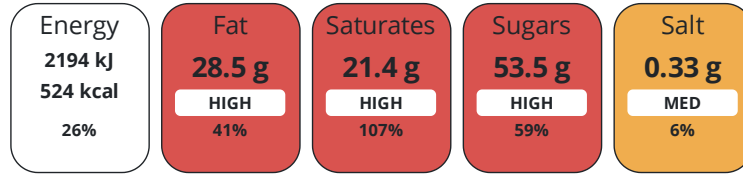
## ADDITIVES

*Product Contains:*

<b>Artificial Colours</b>	Yes	<b>Artificial Sweeteners</b>	Yes
<b>Vegan Diet</b>	No	<b>Vegetarian Diet</b>	Suitable for
<b>Halal Diet</b>	No	<b>Kosher Diet</b>	No

DIET  
SUITABILITYNUTRITIONAL  
INFORMATION

Each 100g/ml portion contains:



of your reference intake.

Typical values per 100g/ml : Energy 524kcal / 2194kj

Nutrient	per 100g	RI per 100g	per 50g serving	RI per 50g serving
<b>Energy (kJ)</b>	2194 kJ	26%	1097 kJ	13%
<b>Energy (kcal)</b>	524 kcal	26%	262 kcal	13%
<b>Fat</b>	28.5 g	41%	14.3 g	20%
of which Saturates	21.4 g	107%	10.7 g	54%
of which Mono-unsaturates	5.1 g		2.6 g	
of which Polyunsaturates	0.5 g		0.3 g	
<b>Carbohydrate</b>	53.8 g	21%	26.9 g	10%
of which Sugars	53.5 g	59%	26.8 g	30%
of which Polyols	0 g		-	
of which Starch	0 g		-	
<b>Fibre</b>	0 g		-	
<b>Protein</b>	12.7 g	25%	6.4 g	13%
<b>Salt</b>	0.33 g	6%	0.2 g	3%
<b>Sodium</b>	1.3 mg		0.7 mg	

Serving Size 50 g

VITAMINS AND  
MINERALS

Nutrient	per 100g	RI per 100g	per 50g serving	RI per 50g serving
<b>Vitamin A</b>	6.92 µg	1%	3.5 µg	0%
<b>Vitamin C</b>	0.71 mg	1%	0.4 mg	1%
<b>Folate/Folic Acid</b>	9.32 µg	5%	4.7 µg	2%
<b>Calcium</b>	324.9 mg	41%	162.5 mg	20%
<b>Iron</b>	0.25 mg	2%	0.1 mg	1%
<b>Zinc</b>	1.19 mg	12%	0.6 mg	6%

SUPPLEMENTARY  
NUTRITIONAL  
INFORMATION

<b>Cholesterol per 100 g/ml (UK/FR)</b>	0.01 g
<b>Trans Fats per 100 g/ml</b>	0.3 g

HANDLING & STORAGE INFORMATION

Directions For Use

PLEASE USE RECIPE INSTRUCTION

Storage Instructions

AMBIENT

Shelf Life from Time of Production

365 Days

Exempt From Shelf Life Labelling

No

ACCREDITATIONS/ CERTIFICATIONS/ ASSURANCE SCHEMES



ORIGIN

Product Country of Origin/Place of Provenance Belgium

PRODUCT CHARACTERISTICS

Standards Testing

Do you undertake trend analysis of microbiological results? Yes

Is shelf life testing undertaken? Yes

CONFIGURATION

Case Configuration

Inner Pack Configuration

Total Quantity of Inner Components in Outer Case 10 Units

Is the Outer Case Splittable? Yes

PRODUCT WEIGHTS

Inner Component

Inner Pack

Variable Weight Consumer Item No

Inner Pack Gross Weight 800 g

Inner Component Weight 800 g

Outer Case

Outer Case Gross Weight 9.28 kg

Outer Case Net Weight 8 kg

PRODUCT DIMENSIONS

Inner Component

Inner Component Depth 150 mm

Inner Component Width 85 mm

Inner Component Height 210 mm

Outer Case

Outer Case Depth 390 mm

Outer Case Width 295 mm

Outer Case Height 225 mm

PALLET INFORMATION

Quantity of Cases Per Pallet Layer 7 Cases

Pallet Height 0.14 MTR

Quantity of Layers Per Pallet 6 Layers

Pallet Gross Weight 383 kg

Quantity of Cases Per Pallet 42 Cases

PACKAGING

Inner Component Packaging

Type	Materials	Weight	Recycled Plastic %	Recyclable	Returnable	Composite
Pack	Plastic	0.13 g	- %			

Outer Case Packaging

Type	Materials	Weight	Recycled Plastic %	Recyclable	Returnable	Composite
Case	Paper/Cardboard	1.28 g	- %			

Transport Packaging

Type	Materials	Weight	Recycled Plastic %	Recyclable	Returnable	Composite
Other	Paper/Cardboard	1.28 g	- %			

OTHER  
INFORMATION  
CONTACT  
INFORMATION

Address

Barry Callebaut Belgium NV & IBC Belgium  
Barry Callebaut (UK) Ltd  
Wildmere Road, Wildmere Ind Estate  
Banbury  
OX16 3UU  
United Kingdom

The information on the [Erudus System](#) has been supplied by the manufacturers of the products and, whilst the owners of the Erudus System take steps to ensure the information is regularly updated, they give no warranty and no guarantee that the information is accurate. Product information and ingredients may change, please always read product labels carefully in addition to using the information provided by Erudus.

We do not accept liability for any inaccuracies or incorrect information contained on this site.  
Please visit <http://www.erudus.com/terms-and-conditions> for full terms and conditions.