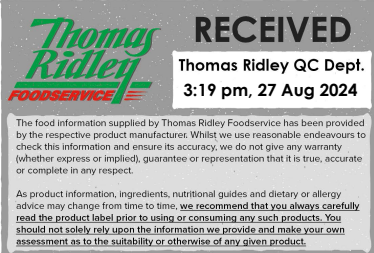


Changed Aug 23, 2024 10:06

Reviewed Aug 23, 2024 10:06

Erudus ID 82b4921d2ffa4130870d4225878fe446

Version 2.0



Thomas Ridley
FOODSERVICE

RECEIVED
Thomas Ridley QC Dept.
3:19 pm, 27 Aug 2024

The food information supplied by Thomas Ridley Foodservice has been provided by the respective product manufacturer. Whilst we use reasonable endeavours to check this information and ensure its accuracy, we do not give any warranty (whether express or implied), guarantee or representation that it is true, accurate or complete in any respect.

As product information, ingredients, nutritional guides and dietary or allergy advice may change from time to time, we recommend that you always carefully read the product label prior to using or consuming any such products. You should not solely rely upon the information we provide and make your own assessment as to the suitability or otherwise of any given product.



FA0925

36 TRENDY ROUND CHOCO 8CM PIDY SELECT

36 Trendy Round Choco 8cm Pidy Select

PRODUCT DESCRIPTION
FLAVOURED SHORTCRUST READY TO FILL

Brand	Pidy Limited
Manufacturer Product Code	641.83.036
Product Type	Food
Product Category	Pastry
Storage Type	Ambient
Erudus ID	82b4921d2ffa4130870d4225878fe446
Specification Type	Bakery Products
Outer Case GTIN	3528960014730



INGREDIENTS

Ingredient Declaration

WHEAT flour (GLUTEN), BUTTERfat (MILK) (EU) 19%, sugar, icing sugar (sugar and potato starch), shea butter, cocoa powder (EU) 4%, free range EGG (EGG), water, coconut oil, skimmed cocoa powder 1%, salt, flavour

ALLERGENS

Product Contains:

Celery/Celery	No	Mustard	No
Cereals Containing Gluten	Yes	Nuts (Tree)	No
Barley	No	Almond nuts	No
Oats	No	Brazil nuts	No
Rye	No	Cashew nuts	No
Wheat (including Spelt and Khorasan)	Yes	Hazelnuts	No
Crustacea	No	Macadamia (Queensland) nuts	No
Eggs	Yes	Pecan nuts	No
Fish	No	Pistachio nuts	No
Lupin	No	Walnuts	No
Milk	Yes	Peanuts	No
Molluscs	No	Sesame Seeds	No
		Soybeans	No
		Sulphur Dioxide and Sulphites	No

Allergen Statement On Pack

CONTAINS EGG WHEAT MILK

Additional Allergen Information

CONTAINS EGG WHEAT MILK

SUPPLEMENTARY INGREDIENT INFORMATION

Palm Oil	No
GM Protein/DNA	No

ADDITIVES

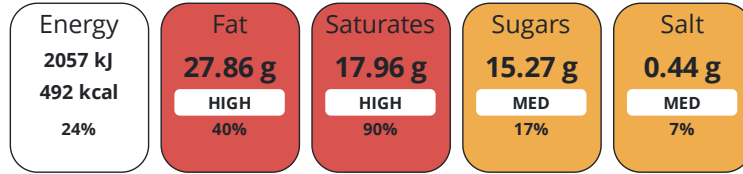
Product Contains:

DIET
SUITABILITY

Vegan Diet	No	Vegetarian Diet	Suitable for
Halal Diet	No	Kosher Diet	No

NUTRITIONAL
INFORMATION

Each 100g/ml portion contains:



of your reference intake.

Typical values per 100g/ml : Energy 492kcal / 2057kJ

Nutrient	per 100g	RI per 100g	per 32g serving	RI per 32g serving
Energy (kJ)	2057 kJ	24%	658.2 kJ	8%
Energy (kcal)	492 kcal	25%	157.4 kcal	8%
Fat	27.86 g	40%	8.9 g	13%
of which Saturates	17.96 g	90%	5.7 g	29%
Carbohydrate	52.44 g	20%	16.8 g	6%
of which Sugars	15.27 g	17%	4.9 g	5%
Fibre	2.81 g		0.9 g	
Protein	6.57 g	13%	2.1 g	4%
Salt	0.44 g	7%	0.1 g	2%

Serving Size 32 g

SUPPLEMENTARY
NUTRITIONAL
INFORMATION

Trans Fats per 100 g/ml 0.74 g

HFSS (HIGH IN
FAT, SALT AND
SUGAR)
HANDLING &
STORAGE
INFORMATION

HFSS Status Not Applicable (out of scope, exempt)

Directions For Use

Ready to fill

Storage Instructions

Store in a dry place - ambient (10°C - 25°C)

Shelf Life from Time of Production 456 Days

ACCREDITATIONS/
CERTIFICATIONS/
ASSURANCE
SCHEMES
ORIGIN

BRCGS Certified

IFS Food Standard

Product Country of Origin/Place of France

Provenance

Additional Origin Details

France

PRODUCT
CHARACTERISTICS

Standards Testing

Do you undertake trend analysis of microbiological results? No

Is shelf life testing undertaken? No

Microbiological Standards

Organism	Description	Frequency	Target	Maximum	Sample (g or ml)
Coliforms (cfu/g or ml)		Annually	<100	1000	400

Organism	Description	Frequency	Target	Maximum	Sample (g or ml)
E. Coli (cfu/g or ml)		Annually	<0	10	400
Staphylococcus Aureus (cfu/g or ml)		Annually	<20	100	400
Salmonella (cfu/g or ml)		Annually	<0	0	25
Yeast (cfu/g or ml)		Annually	<100	500	400
Moulds (cfu/g or ml)		Annually	<100	500	400
Enterobacter Sakazakii (cfu/g or ml)		Annually	<10	100	400

CONFIGURATION

Case Configuration Inner Pack Configuration

Total Quantity of Inner Components in 36 Units

Outer Case

Is the Outer Case Splittable? No

PRODUCT WEIGHTS

Inner Component

Variable Weight Consumer Item Yes

Outer Case

Outer Case Gross Weight 1.73 kg

Outer Case Net Weight 1.52 kg

PRODUCT DIMENSIONS

Inner Component

Inner Component Depth 0 mm

Inner Component Width 0 mm

Inner Component Height 0 mm

Outer Case

Outer Case Depth 400 mm

Outer Case Width 300 mm

Outer Case Height 92 mm

PALLET INFORMATION

Quantity of Cases Per Pallet Layer 8 Cases **Pallet Type** UK Standard Pallet

Quantity of Layers Per Pallet 19 Layers **Pallet Height** 1.89 MTR

Quantity of Cases Per Pallet 152 Cases **Pallet Gross Weight** 175.1 kg

PACKAGING

Outer Case Packaging

Type	Materials	Weight	Recycled Plastic %	Recyclable	Returnable	Composite
Case	Plastic	216 g	- %			
Case	Paper/Cardboard	356 g	- %			

Transport Packaging

Type	Materials	Weight	Recycled Plastic %	Recyclable	Returnable	Composite
Other	Wood	900 g	- %			

OTHER INFORMATION

Commodity Code 1905907000

CONTACT
INFORMATION

Address

Pidy Limited
Pidy Production
32 Ave de menin
Halluin
59250

The information on the [Erudus System](#) has been supplied by the manufacturers of the products and, whilst the owners of the Erudus System take steps to ensure the information is regularly updated, they give no warranty and no guarantee that the information is accurate. Product information and ingredients may change, please always read product labels carefully in addition to using the information provided by Erudus.

We do not accept liability for any inaccuracies or incorrect information contained on this site.

Please visit <http://www.erudus.com/terms-and-conditions> for full terms and conditions.