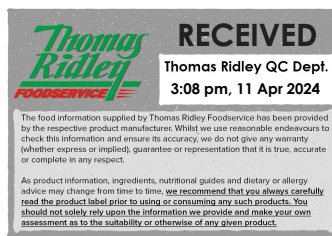


Changed Apr 08, 2024 08:27

Reviewed Apr 08, 2024 08:27

Erudus ID 1bdbfcb6ffd1440696ad1515d3a69dbf

Version 2.0



FA0956

54 TRENDY RECTANGULAR SWEET BUTTER

Trendy Rectangular

PRODUCT DESCRIPTION

SWEET SHORTCRUST READY TO FILL

Brand	Pidy Limited
Manufacturer Product Code	640.23.054
Product Type	Food
Product Category	Pastry
Storage Type	Ambient
Erudus ID	1bdbfcb6ffd1440696ad1515d3a69dbf
Specification Type	Bakery Products
Outer Case GTIN	3528960018035



INGREDIENTS

Ingredient Declaration

WHEAT flour (GLUTEN), BUTTERfat (MILK) 22%, sugar, icing sugar (sugar and potatoe starch), free range EGG (EGG), water, salt

ALLERGENS

Product Contains:

Celery/Celery	No	Mustard	No
Cereals Containing Gluten	Yes	Nuts (Tree)	No
Barley	No	Almond nuts	No
Oats	No	Brazil nuts	No
Rye	No	Cashew nuts	No
Wheat (including Spelt and Khorasan)	Yes	Hazelnuts	No
Crustacea	No	Macadamia (Queensland) nuts	No
Eggs	Yes	Pecan nuts	No
Fish	No	Pistachio nuts	No
Lupin	No	Walnuts	No
Milk	Yes	Peanuts	No
Molluscs	No	Sesame Seeds	No
		Soybeans	No
		Sulphur Dioxide and Sulphites	No

SUPPLEMENTARY INGREDIENT INFORMATION

Palm Oil	No
Hydrogenated Vegetable Oil/Fat	No
GM Protein/DNA	No

ADDITIVES

Product Contains:

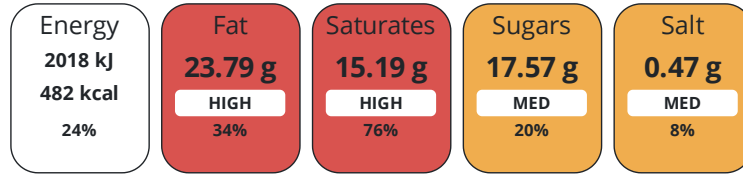
Artificial Antioxidants	No	Artificial Flavourings	No
Artificial Colours	No	Artificial Preservatives	No
Artificial Flavour Enhancers	No	Artificial Sweeteners	No

DIET
SUITABILITY

Vegan Diet	No	Vegetarian Diet	Suitable for
Halal Diet	No	Kosher Diet	No

NUTRITIONAL
INFORMATION

Each 100g/ml portion contains:



of your reference intake.

Typical values per 100g/ml : Energy 482kcal / 2018kJ

Nutrient	per 100g	RI per 100g	per 23.3g serving	RI per 23.3g serving
Energy (kJ)	2018 kJ	24%	470.2 kJ	6%
Energy (kcal)	482 kcal	24%	112.3 kcal	6%
Fat	23.79 g	34%	5.5 g	8%
of which Saturates	15.19 g	76%	3.5 g	18%
Carbohydrate	59.85 g	23%	13.9 g	5%
of which Sugars	17.57 g	20%	4.1 g	5%
Fibre	1.48 g		0.3 g	
Protein	6.38 g	13%	1.5 g	3%
Salt	0.47 g	8%	0.1 g	2%

Serving Size 23.3 g

Source of Nutritional Information Calculation based on known values of ingredients

Trans Fats per 100 g/ml 0.85 g

SUPPLEMENTARY
NUTRITIONAL
INFORMATION

HANDLING &
STORAGE
INFORMATION

Directions For Use

SWEET SHORTCRUST READY TO FILL

Storage Instructions

Store in a dry place - ambient (10°C - 25°C)

Storage Instructions After Opening

Store in a dry place - ambient (10°C - 25°C)

Shelf Life from Time of Production 365 Days **Exempt From Shelf Life Labelling** No

ACCREDITATIONS/
CERTIFICATIONS/
ASSURANCE
SCHEMES
ORIGIN

BRCGS Certified

Product Country of Origin/Place of France

Provenance

Additional Origin Details

France

PRODUCT
CHARACTERISTICS

Standards Testing

Do you undertake trend analysis of microbiological results? No **Is shelf life testing undertaken?** No

Microbiological Standards

Organism	Description	Frequency	Target	Maximum	Sample (g or ml)
Coliforms (cfu/g or ml)	Coliforms	Annually	<100	1000	400
E. Coli (cfu/g or ml)	E. Coli	Annually	<0	10	400
Enterobacteriaceae (cfu/g or ml)	Enterobacteriaceae	Annually	<10	100	400
Staphylococcus Aureus (cfu/g or ml)	Staphylococcus Aureus	Annually	<20	100	400
Salmonella (cfu/g or ml)	Salmonella	Annually	<0	0	400
Yeast (cfu/g or ml)	Yeast	Annually	<100	500	400
Moulds (cfu/g or ml)	Moulds	Annually	<100	500	400

CONFIGURATION

Case Configuration Inner Pack Configuration

Variable Inner Components in Outer Case	No
Total Quantity of Inner Components in Outer Case	54 Units
Is the Outer Case Splittable?	No

PRODUCT WEIGHTS

Inner Component	
Variable Weight Consumer Item e mark	Yes No
Outer Case	
Outer Case Gross Weight	1.68 kg
Outer Case Net Weight	1.25 kg

PRODUCT DIMENSIONS

Inner Component	
Inner Component Depth	0 mm
Inner Component Width	0 mm
Inner Component Height	0 mm
Outer Case	
Outer Case Depth	400 mm
Outer Case Width	300 mm
Outer Case Height	67 mm

PALLET INFORMATION

Quantity of Cases Per Pallet Layer	8 Cases	Pallet Height	1.55 MTR
Quantity of Layers Per Pallet	21 Layers	Pallet Gross Weight	307.3 kg
Quantity of Cases Per Pallet	168 Cases		

PACKAGING

Inner Component Packaging							
Type	Materials	Weight	Recycled Plastic %	Recyclable	Returnable	Composite	
Tray	Plastic / PET (Polyethylene Terethphalate)	0.21 g	50 %	Yes	No	No	
Outer Case Packaging							
Type	Materials	Weight	Recycled Plastic %	Recyclable	Returnable	Composite	
Case	Paper/Cardboard / Cardboard	0.194 g	- %	Yes	No	No	
Label	Paper/Cardboard / Paper	0.004 g	- %	No	No	No	

MARKETING
INFORMATION

Marketing Description

SWEET SHORTCRUST READY TO FILL

OTHER
INFORMATION

Commodity Code 1905907000

CONTACT
INFORMATION

Address

Pidy Limited
Unit 4 Sterling Business Park
Salthouse Road, Brackmills
Northampton
NN4 7EX
England

P: (Phone) 01604 705666

The information on the [Erudus System](#) has been supplied by the manufacturers of the products and, whilst the owners of the Erudus System take steps to ensure the information is regularly updated, they give no warranty and no guarantee that the information is accurate. Product information and ingredients may change, please always read product labels carefully in addition to using the information provided by Erudus.

We do not accept liability for any inaccuracies or incorrect information contained on this site.
Please visit <http://www.erudus.com/terms-and-conditions> for full terms and conditions.