

Changed Feb 12, 2022 11:02

Erudus ID effc03756fde46d5ae01f9ba32037130

Version 1.0

FA0972

# 480 ZAKOUSKIS SG

480 Zakouskis Sg

## PRODUCT DESCRIPTION

Puff pastry ready to fill for the aperitif or dessert. Round shape, golden colour with natural glaze. Crispy and crunchy structure.

Brand	Pidy Limited
Manufacturer Product Code	020.50.480
Product Type	Food
Product Category	Pastry
Storage Type	Ambient
Erudus ID	effc03756fde46d5ae01f9ba32037130
Specification Type	Legacy
Outer Case GTIN	0020176020817



## INGREDIENTS

### Ingredient Declaration

**WHEAT** flour (**GLUTEN**), palm fat, water, salt, whole **MILK**, rapeseed oil, **MILK** proteins, pea proteins

## ALLERGENS

Product Contains:

<b>Celery/Celeriac</b>	No	<b>Mustard</b>	No
<b>Cereals Containing Gluten</b>	Yes	<b>Nuts (Tree)</b>	No
<b>Barley</b>	No	<b>Almond nuts</b>	No
<b>Oats</b>	No	<b>Brazil nuts</b>	No
<b>Rye</b>	No	<b>Cashew nuts</b>	No
<b>Wheat (including Spelt and Khorasan)</b>	Yes	<b>Hazelnuts</b>	No
<b>Crustacea</b>	No	<b>Macadamia (Queensland) nuts</b>	No
<b>Eggs</b>	May Contain	<b>Pecan nuts</b>	No
<b>Fish</b>	No	<b>Pistachio nuts</b>	No
<b>Lupin</b>	No	<b>Walnuts</b>	No
<b>Milk</b>	Yes	<b>Peanuts</b>	No
<b>Molluscs</b>	No	<b>Sesame Seeds</b>	No
		<b>Soybeans</b>	May Contain
		<b>Sulphur Dioxide and Sulphites</b>	No

Risk Source:

## SUPPLEMENTARY INGREDIENT INFORMATION

<b>Palm Oil</b>	Yes
<b>Hydrogenated Vegetable Oil/Fat</b>	Yes
<b>GM Protein/DNA</b>	No

## ADDITIVES

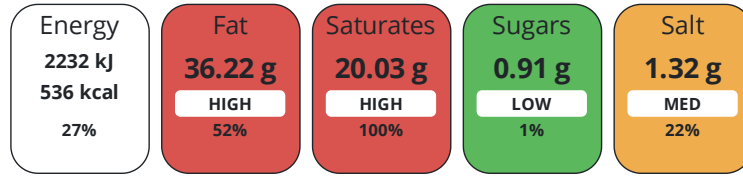
Product Contains:

## DIET SUITABILITY

<b>Suitable for Coeliacs</b>	No	<b>Halal Diet</b>	Suitable for
<b>Kosher Diet</b>	No	<b>Vegetarian Diet</b>	Suitable for
<b>Vegan Diet</b>	No		



Each 100g/ml portion contains:



of your reference intake.

Typical values per 100g/ml : Energy 536kcal / 2232kJ

Nutrient	per 100g/ml	RI per 100g/ml	per 4.5g/ml serving	RI per 4.5g/ml serving
Energy (kJ)	2232 kJ	27%	100.4 kJ	1%
Energy (kcal)	536 kcal	27%	24.1 kcal	1%
Fat	36.22 g	52%	1.6 g	2%
of which Saturates	20.03 g	100%	0.9 g	5%
Carbohydrate	43.16 g	17%	1.9 g	1%
of which Sugars	0.91 g	1%	-	-
Fibre	1.94 g	-	0.1 g	-
Protein	8.42 g	17%	0.4 g	1%
Salt	1.32 g	22%	0.1 g	2%
Sodium	552 mg	-	24.8 mg	-

Serving Size 4.5 g

Trans Fats per 100 g/ml 0.36 g

SUPPLEMENTARY  
NUTRITIONAL  
INFORMATION

HANDLING &  
STORAGE  
INFORMATION

**Directions For Use**

Always warm the product in the oven, 170°C for 6mins before filling.

**Storage Instructions**

Store in a dry place - ambient (10°C - 25°C)

Shelf Life from Time of Production 510 Days

ACCREDITATIONS/  
CERTIFICATIONS/  
ASSURANCE  
SCHEMES  
ORIGIN

BRCGS Certified

Other Accreditation

Roundtable of Sustainable Palm Oil (RSPO)

Product Country of Origin/Place of Belgium

**Provenance**

**Additional Origin Details**

Belgium

PRODUCT  
CHARACTERISTICS

Standards Testing

Do you undertake trend analysis of No

Is shelf life testing undertaken? No

**microbiological results?**

Microbiological Standards

Organism	Description	Frequency	Target	Maximum	Sample (g or ml)
Total Viable Count (TVC) (cfu/g or ml)		Annually	<1000	10000	-
Enterobacteriaceae (cfu/g or ml)		Annually	<10	100	-

Organism	Description	Frequency	Target	Maximum	Sample (g or ml)
Coliforms (cfu/g or ml)		Annually	<100	1000	-
Salmonella (cfu/g or ml)	/25g	Annually	<0	1	-
Staphylococcus Aureus (cfu/g or ml)		Annually	<20	100	-
E. Coli (cfu/g or ml)		Annually	<0	10	-
Yeast (cfu/g or ml)		Annually	<100	1500	-
Moulds (cfu/g or ml)		Annually	<100	1500	-

CONFIGURATION

Case Configuration Inner Pack Configuration

**Total Quantity of Inner Components in** 480 Units

**Outer Case**

**Is the Outer Case Splittable?** No

PRODUCT WEIGHTS

Inner Component

**Variable Weight Consumer Item** No

**Weight/Volume**

0

Outer Case

**Outer Case Gross Weight** 2.9 kg

**Outer Case Net Weight** 2.16 kg

PRODUCT DIMENSIONS

Inner Component

**Inner Component Depth** 0 mm

**Inner Component Width** 0 mm

**Inner Component Height** 0 mm

Outer Case

**Outer Case Depth** 400 mm

**Outer Case Width** 300 mm

**Outer Case Height** 310 mm

PALLET INFORMATION

**Quantity of Cases Per Pallet Layer** 8 Cases **Pallet Height** 2 MTR

**Quantity of Layers Per Pallet** 6 Layers **Pallet Gross Weight** 162.15 kg

**Quantity of Cases Per Pallet** 48 Cases

PACKAGING

Inner Component Packaging

Type	Materials	Weight	Recycled Plastic %	Recyclable	Returnable	Composite
Poly Treated PET/PE	Plastic	0.3 g	- %			

Outer Case Packaging

Type	Materials	Weight	Recycled Plastic %	Recyclable	Returnable	Composite
Case	Plastic	290 g	- %			
Case	Paper/Cardboard	446 g	- %			

OTHER INFORMATION

**Intrastat/Taric Code** 1905908000

**Manufacturer Comments**

N/A

CONTACT  
INFORMATION

Address

Pidy Limited  
Unit 4 Sterling Business Park  
Salthouse Road, Brackmills  
Northampton  
NN4 7EX  
England

P: (Phone) 01604 705666

The information on the [Erudus System](#) has been supplied by the manufacturers of the products and, whilst the owners of the Erudus System take steps to ensure the information is regularly updated, they give no warranty and no guarantee that the information is accurate. Product information and ingredients may change, please always read product labels carefully in addition to using the information provided by Erudus.

We do not accept liability for any inaccuracies or incorrect information contained on this site.  
Please visit <http://www.erudus.com/terms-and-conditions> for full terms and conditions.