

Changed Sep 12, 2024 12:05

Reviewed Sep 12, 2024 12:05

Erudus ID bc9e00a4215d49d39f273838057fb395

Version 2.0

FA0976

# 108 Vegan Shortcrust Tart 9.5cm Sweet SG

Vegan Sweet Shortcrust Ready To Fill

## PRODUCT DESCRIPTION

Ready to fill

Brand	Pidy Limited
Manufacturer Product Code	892.35.108
Product Type	Food
Product Category	Pastry
Storage Type	Ambient
Erudus ID	bc9e00a4215d49d39f273838057fb395
Specification Type	Bakery Products
Outer Case GTIN	3528960015812



## INGREDIENTS

### Ingredient Declaration

WHEAT flour (GLUTEN) (EU), sugar, palm fat, water, rapeseedoil, chick pea flour, coconut fat, salt, thickener: xanthan gum

### Ingredient Statements

Prepared to a vegan recipe in an environment where EGG and MILK are handled.

## ALLERGENS

Product Contains:

Celery/Celeriac	No
Cereals Containing Gluten	Yes
Barley	No
Oats	No
Rye	No
Wheat (including Spelt and Khorasan)	Yes
Crustacea	No
Eggs	May Contain
Fish	No
Lupin	No
Milk	May Contain
Molluscs	No

Risk Source:

Eggs (Risk Source)	Line
--------------------	------

Mustard	No
Nuts (Tree)	No
Almond nuts	No
Brazil nuts	No
Cashew nuts	No
Hazelnuts	No
Macadamia (Queensland) nuts	No
Pecan nuts	No
Pistachio nuts	No
Walnuts	No
Peanuts	No
Sesame Seeds	No
Soybeans	No
Sulphur Dioxide and Sulphites	No

Milk (Risk Source)	Line
--------------------	------

### Allergen Statement On Pack

Contains WHEAT flour (GLUTEN)

### Additional Allergen Information

Prepared to a vegan recipe in an environment where EGG and MILK are handled



SUPPLEMENTARY  
INGREDIENT  
INFORMATION

<b>Palm Oil</b>	Yes
<b>Hydrogenated Vegetable Oil/Fat</b>	No
<b>GM Protein/DNA</b>	No

ADDITIVES

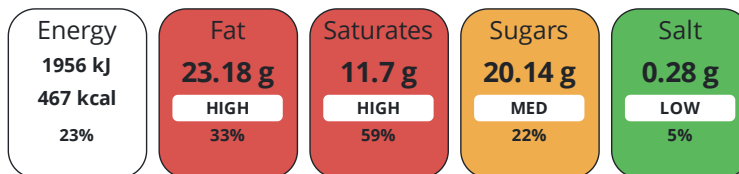
Product Contains:

DIET  
SUITABILITY

<b>Vegan Diet</b>	Suitable for	<b>Vegetarian Diet</b>	Suitable for
<b>Halal Diet</b>	Suitable for	<b>Kosher Diet</b>	No

NUTRITIONAL  
INFORMATION

Each 100g/ml portion contains:



of your reference intake.

Typical values per 100g/ml : Energy 467kcal / 1956kJ

Nutrient	per 100g	RI per 100g	per 31g serving	RI per 31g serving
<b>Energy (kJ)</b>	1956 kJ	23%	606.4 kJ	7%
<b>Energy (kcal)</b>	467 kcal	23%	144.8 kcal	7%
<b>Fat</b>	23.18 g	33%	7.2 g	10%
<b>of which Saturates</b>	11.7 g	59%	3.6 g	18%
<b>Carbohydrate</b>	57.12 g	22%	17.7 g	7%
<b>of which Sugars</b>	20.14 g	22%	6.2 g	7%
<b>Fibre</b>	2.27 g		0.7 g	
<b>Protein</b>	6.44 g	13%	2 g	4%
<b>Salt</b>	0.28 g	5%	0.1 g	2%

<b>Serving Size</b>	31 g
<b>Serving Size Description</b>	one serving = 1 PC (31,0 g)
<b>Number of Servings</b>	108 Servings

**Source of Nutritional Information** Calculation based on known values of ingredients

SUPPLEMENTARY  
NUTRITIONAL  
INFORMATION

HFSS (HIGH IN  
FAT, SALT AND  
SUGAR)  
HANDLING &  
STORAGE  
INFORMATION

**HFSS Status** Not Applicable (out of scope, exempt)

**Directions For Use**

Ready to fill

**Storage Instructions**

Store in a dry place - ambient (10°C - 25°C)

**Shelf Life from Time of Production** 270 Days

ACCREDITATIONS/  
CERTIFICATIONS/  
ASSURANCE  
SCHEMES

**BRCGS Certified**  
**ISO 9001:2015 (Quality Management Systems)**  
**Sedex**

**IFS Food Standard**  
**Roundtable of Sustainable Palm Oil (RSPO)**

ORIGIN	<b>Product Country of Origin/Place of Provenance</b> France					
PRODUCT CHARACTERISTICS	<b>Additional Origin Details</b>					
	WHEAT flour (GLUTEN) : BE					
	Standards Testing					
	<b>Do you undertake trend analysis of microbiological results?</b>		No	<b>Is shelf life testing undertaken?</b>		No
	Microbiological Standards					
	<b>Organism</b>	<b>Description</b>	<b>Frequency</b>	<b>Target</b>	<b>Maximum</b>	<b>Sample (g or ml)</b>
	Coliforms (cfu/g or ml)		Annually	<100	1000	400
	E. Coli (cfu/g or ml)		Annually	<0	10	400
	Enterobacteriaceae (cfu/g or ml)		Annually	<10	100	400
	Staphylococcus Aureus (cfu/g or ml)		Annually	<20	100	400
Total Viable Count (TVC) (cfu/g or ml)		Annually	<1000	10000	400	
Salmonella (cfu/g or ml)		Annually	<0	0	25	
Yeast (cfu/g or ml)		Annually	<100	500	400	
Moulds (cfu/g or ml)		Annually	<100	500	400	
CONFIGURATION	Case Configuration		Inner Pack Configuration			
	<b>Variable Inner Components in Outer Case</b>		No			
	<b>Total Quantity of Inner Components in Outer Case</b>		108 Units			
	<b>Is the Outer Case Splittable?</b>		No			
PRODUCT WEIGHTS	Inner Component					
	<b>Variable Weight Consumer Item</b>		Yes			
	Outer Case					
	<b>Outer Case Gross Weight</b>		3.89 kg			
<b>Outer Case Net Weight</b>		3.35 kg				
PRODUCT DIMENSIONS	Inner Component					
	<b>Inner Component Depth</b>		400 mm			
	<b>Inner Component Width</b>		300 mm			
	<b>Inner Component Height</b>		225 mm			
	Outer Case					
	<b>Outer Case Depth</b>		400 mm			
	<b>Outer Case Width</b>		300 mm			
	<b>Outer Case Height</b>		225 mm			
PALLET INFORMATION	<b>Quantity of Cases Per Pallet Layer</b>		8 Cases		<b>Pallet Type</b> UK Standard Pallet	
	<b>Quantity of Layers Per Pallet</b>		6 Layers		<b>Pallet Height</b> 1.5 MTR	
	<b>Quantity of Cases Per Pallet</b>		48 Cases		<b>Pallet Gross Weight</b> 209.91 kg	
PACKAGING	Inner Component Packaging					
	<b>Type</b>	<b>Materials</b>	<b>Weight</b>	<b>Recycled Plastic %</b>	<b>Recyclable</b>	<b>Returnable</b> <b>Composite</b>
	Carton	Plastic	79 g	- %		
Carton	Paper/Cardboard	1 g	- %			

Outer Case Packaging

Type	Materials	Weight	Recycled Plastic %	Recyclable	Returnable	Composite
Case	Paper/Cardboard	340 g	- %			

Transport Packaging

Type	Materials	Weight	Recycled Plastic %	Recyclable	Returnable	Composite
Other	Plastic	190 g	- %			
Other	Wood	23000 g	- %			

OTHER INFORMATION

<b>Intrastat/Taric Code</b>	19059070
-----------------------------	----------

CONTACT INFORMATION

Address  
 Pidy Limited  
 Unit 4 Sterling Business Park  
 Salthouse Road, Brackmills  
 Northampton  
 NN4 7EX  
 England

P: (Phone) 01604 705666

The information on the [Erudus System](#) has been supplied by the manufacturers of the products and, whilst the owners of the Erudus System take steps to ensure the information is regularly updated, they give no warranty and no guarantee that the information is accurate. Product information and ingredients may change, please always read product labels carefully in addition to using the information provided by Erudus.

We do not accept liability for any inaccuracies or incorrect information contained on this site.  
 Please visit <http://www.erudus.com/terms-and-conditions> for full terms and conditions.