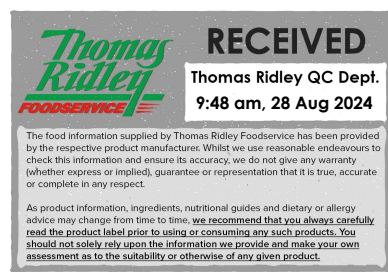


Changed Aug 23, 2024 13:08

Reviewed Aug 23, 2024 13:08

Erudus ID d2e6677a92e647508bba7208266043e4

Version 2.0



FA0988

# 12 PLAIN SPONGE CAKE SHEETS

## 580x380x7mm

12 Plain Sponge Cake Sheets 580x380x7mm 12x12

### PRODUCT DESCRIPTION

Ambient sponge

Brand	Pidy Limited
Manufacturer Product Code	571.53.017
Product Type	Food
Product Category	Pastry
Storage Type	Ambient
Erudus ID	d2e6677a92e647508bba7208266043e4
Specification Type	Bakery Products

Outer Case GTIN 3528960016741



### INGREDIENTS

#### Ingredient Declaration

WHEAT flour (GLUTEN), sugar, free range EGG (EGG), water, free range EGG white (EGG), invert sugar, stabilizer : E420, vanilla flavour (contains alcohol), emulsifier: E471, baking powder: E450i and E500ii (WHEAT starch), salt, preservative: potassium sorbate E202, natural vanilla flavour with other natural flavours

### ALLERGENS

Product Contains:

<b>Celery/Celeriac</b>	No	<b>Mustard</b>	No
<b>Cereals Containing Gluten</b>	Yes	<b>Nuts (Tree)</b>	May Contain
<b>Barley</b>	No	<b>Almond nuts</b>	May Contain
<b>Oats</b>	No	<b>Brazil nuts</b>	May Contain
<b>Rye</b>	No	<b>Cashew nuts</b>	May Contain
<b>Wheat (including Spelt and Khorasan)</b>	Yes	<b>Hazelnuts</b>	May Contain
<b>Crustacea</b>	No	<b>Macadamia (Queensland) nuts</b>	May Contain
<b>Eggs</b>	Yes	<b>Pecan nuts</b>	May Contain
<b>Fish</b>	No	<b>Pistachio nuts</b>	May Contain
<b>Lupin</b>	No	<b>Walnuts</b>	No
<b>Milk</b>	May Contain	<b>Peanuts</b>	No
<b>Molluscs</b>	No	<b>Sesame Seeds</b>	No
		<b>Soybeans</b>	May Contain
		<b>Sulphur Dioxide and Sulphites</b>	No

Risk Source:

<b>Almond nuts (Risk Source)</b>	Line	<b>Tree Nuts (Risk Source)</b>	Line
<b>Cashew nuts (Risk Source)</b>	Line	<b>Brazil nuts (Risk Source)</b>	Line
<b>Macadamia nuts (Risk Source)</b>	Line	<b>Hazelnuts (Risk Source)</b>	Line
<b>Pistachio nuts (Risk Source)</b>	Line	<b>Pecan nuts (Risk Source)</b>	Line
		<b>Soybeans (Risk Source)</b>	Line

**Allergen Statement On Pack**

Contains WHEAT flour, GLUTEN, EGG May contain traces of NUTS, SOYA and MILK

**Additional Allergen Information**

Contains WHEAT flour, GLUTEN, EGG May contain traces of NUTS, SOYA and MILK

SUPPLEMENTARY  
INGREDIENT  
INFORMATION

<b>Palm Oil</b>	No
<b>GM Protein/DNA</b>	No

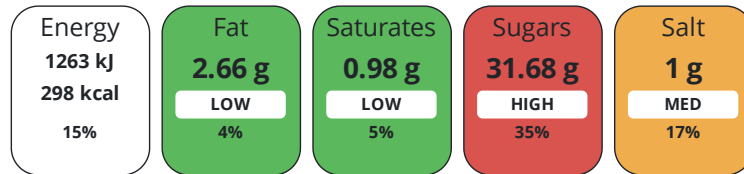
ADDITIVES

*Product Contains:*DIET  
SUITABILITY

<b>Vegan Diet</b>	No	<b>Vegetarian Diet</b>	Suitable for
<b>Halal Diet</b>	No	<b>Kosher Diet</b>	No

NUTRITIONAL  
INFORMATION

Each 100g/ml portion contains:



of your reference intake.

Typical values per 100g/ml : Energy 298kcal / 1263kJ

Nutrient	per 100g	RI per 100g	per 30g serving	RI per 30g serving
<b>Energy (kJ)</b>	1263 kJ	15%	378.9 kJ	5%
<b>Energy (kcal)</b>	298 kcal	15%	89.4 kcal	4%
<b>Fat</b>	2.66 g	4%	0.8 g	1%
of which Saturates	0.98 g	5%	0.3 g	2%
<b>Carbohydrate</b>	60.12 g	23%	18 g	7%
of which Sugars	31.68 g	35%	9.5 g	11%
<b>Fibre</b>	1.54 g		0.5 g	
<b>Protein</b>	7.64 g	15%	2.3 g	5%
<b>Salt</b>	1 g	17%	0.3 g	5%

<b>Serving Size</b>	30 g
<b>Serving Size Description</b>	1 piece
<b>Number of Servings</b>	12 Servings

SUPPLEMENTARY  
NUTRITIONAL  
INFORMATION

<b>Trans Fats per 100 g/ml</b>	0 g
--------------------------------	-----

HFSS (HIGH IN  
FAT, SALT AND  
SUGAR)

<b>HFSS Status</b>	Not Applicable (out of scope, exempt)
--------------------	---------------------------------------

HANDLING &  
STORAGE  
INFORMATION**Directions For Use**

Ready to fill

**Storage Instructions**

Store in a dry place - ambient (10°C - 25°C)

<b>Shelf Life from Time of Production</b>	273 Days
---	----------

ACCREDITATIONS/  
CERTIFICATIONS/  
ASSURANCE  
SCHEMES

<b>BRCGS Certified</b>	
------------------------	--

ORIGIN	<b>Product Country of Origin/Place of Provenance</b>	France					
PRODUCT CHARACTERISTICS	<b>Additional Origin Details</b>	France					
	Standards Testing	Standards Testing					
	<b>Do you undertake trend analysis of microbiological results?</b>	No	<b>Is shelf life testing undertaken?</b>	No			
	Microbiological Standards	Microbiological Standards					
	<b>Organism</b>	<b>Description</b>	<b>Frequency</b>	<b>Target</b>	<b>Maximum</b>	<b>Sample (g or ml)</b>	
	Coliforms (cfu/g or ml)		Annually	<0	0	400	
	E. Coli (cfu/g or ml)		Annually	<0	10	400	
	Enterobacteriaceae (cfu/g or ml)		Annually	<0	0	400	
	Staphylococcus Aureus (cfu/g or ml)		Annually	<0	0	400	
	Total Viable Count (TVC) (cfu/g or ml)		Annually	<1000	10000	400	
Salmonella (cfu/g or ml)		Annually	<0	0	25		
Yeast (cfu/g or ml)		Annually	<100	500	400		
Moulds (cfu/g or ml)		Annually	<100	500	400		
CONFIGURATION	Case Configuration			Inner Pack Configuration			
	<b>Total Quantity of Inner Components in Outer Case</b>	12 Units	<b>Count per Inner Component</b>	12			
	<b>Is the Outer Case Splittable?</b>	No					
PRODUCT WEIGHTS	Inner Component	Inner Component					
	<b>Variable Weight Consumer Item</b>	No					
	Outer Case	Outer Case					
	<b>Outer Case Gross Weight</b>	4.97 kg					
	<b>Outer Case Net Weight</b>	4.32 kg					
PRODUCT DIMENSIONS	Inner Component	Inner Component					
	<b>Inner Component Depth</b>	0 mm					
	<b>Inner Component Width</b>	0 mm					
	<b>Inner Component Height</b>	0 mm					
	Outer Case	Outer Case					
	<b>Outer Case Depth</b>	592 mm					
	<b>Outer Case Width</b>	392 mm					
	<b>Outer Case Height</b>	110 mm					
	PALLET INFORMATION	<b>Quantity of Cases Per Pallet Layer</b>	4 Cases	<b>Pallet Type</b>	UK Standard Pallet		
		<b>Quantity of Layers Per Pallet</b>	15 Layers	<b>Pallet Height</b>	1.8 MTR		
<b>Quantity of Cases Per Pallet</b>		60 Cases					
<b>Commodity Code</b>		1905905500					
OTHER INFORMATION							

CONTACT  
INFORMATION

Address

Pidy Limited  
Unit 4 Sterling Business Park  
Salthouse Road, Brackmills  
Northampton  
NN4 7EX  
England

P. (Phone) 01604 705666

The information on the [Erudus System](#) has been supplied by the manufacturers of the products and, whilst the owners of the Erudus System take steps to ensure the information is regularly updated, they give no warranty and no guarantee that the information is accurate. Product information and ingredients may change, please always read product labels carefully in addition to using the information provided by Erudus.

We do not accept liability for any inaccuracies or incorrect information contained on this site.  
Please visit <http://www.erudus.com/terms-and-conditions> for full terms and conditions.