


Changed Feb 13, 2025 10:39

Reviewed Feb 13, 2025 10:39

Erudus ID 168bdd0186c74d769f9fd286989762e8


Version 1.0

Status Published



RECEIVED

Thomas Ridley QC Dept.
12:35, 2 May 2025



United around food data

The food information supplied by Thomas Ridley Foodservice has been provided by the respective product manufacturer. Whilst we use reasonable endeavours to check this information and ensure its accuracy, we do not give any warranty (whether express or implied), guarantee or representation that it is true, accurate or complete in any respect.

As product information, ingredients, nutritional guides and dietary or allergy advice may change from time to time, we recommend that you always carefully read the product label prior to using or consuming any such products. You should not solely rely upon the information we provide and make your own assessment as to the suitability or otherwise of any given product.

FA0991

Mona Lisa Couverture milk chocolate truffle shells 504pcs/UC 108BOX/PAL

Couverture Milk Chocolate 504x1.36kg

PRODUCT DESCRIPTION

Mona Lisa Chocolate truffle shells milk couverture chocolate

| | |
|---------------------------|--|
| Brand | Barry Callebaut Belgium NV & IBC Belgium |
| Manufacturer Product Code | CHM-TS-22351E0-999 |
| Product Type | Food |
| Product Category | Desserts |
| Storage Type | Ambient |
| Erudus ID | 168bdd0186c74d769f9fd286989762e8 |
| Specification Type | Bakery Products |

Outer Case GTIN8711177648590



INGREDIENTS

Ingredient Declaration

sugar 40,5%; cocoa butter 26,5%; whole milk powder 21,5%; cocoa mass 10,5%; emulsifier: lecithins (soya)<1%; natural vanilla flavouring <1%

ALLERGENS

Product Contains:

| | |
|--------------------------------------|-----|
| Celery/Celeriac | No |
| Cereals Containing Gluten | No |
| Barley | No |
| Oats | No |
| Rye | No |
| Wheat (including Spelt and Khorasan) | No |
| Crustacea | No |
| Eggs | No |
| Fish | No |
| Lupin | No |
| Milk | Yes |
| Molluscs | No |

Additional Allergen Information

Contains: Milk

| | |
|-------------------------------|-----|
| Mustard | No |
| Nuts (Tree) | No |
| Almond nuts | No |
| Brazil nuts | No |
| Cashew nuts | No |
| Hazelnuts | No |
| Macadamia (Queensland) nuts | No |
| Pecan nuts | No |
| Pistachio nuts | No |
| Walnuts | No |
| Peanuts | No |
| Sesame Seeds | No |
| Soybeans | Yes |
| Sulphur Dioxide and Sulphites | No |

SUPPLEMENTARY
INGREDIENT
INFORMATION

| | |
|--------------------------------|----|
| Palm Oil | No |
| Hydrogenated Vegetable Oil/Fat | No |
| GM Protein/DNA | No |

| | |
|-------------------------------|---------|
| Alcoholic Strength %Vol (ABV) | 0 % Vol |
|-------------------------------|---------|

ADDITIVES

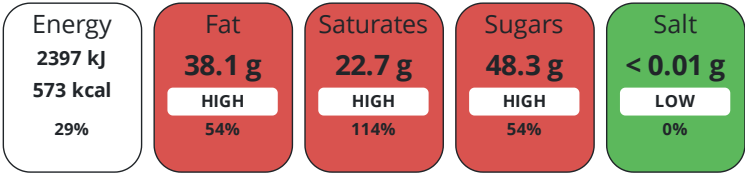
Product Contains:

| | | | |
|------------------------------|-----------|--------------------------|--------------|
| Artificial Antioxidants | No | Artificial Flavourings | No |
| Artificial Colours | No | Artificial Preservatives | No |
| Artificial Flavour Enhancers | No | Artificial Sweeteners | No |
| Vegan Diet | No | Vegetarian Diet | Suitable for |
| Halal Diet | Certified | Kosher Diet | Certified |

DIET
SUITABILITY

NUTRITIONAL
INFORMATION

Each 100g/ml portion contains:



of your reference intake.

Typical values per 100g/ml : Energy 573kcal / 2397kJ

| Nutrient | per 100g | RI per 100g | per 50g serving | RI per 50g serving |
|--------------------|----------|-------------|-----------------|--------------------|
| Energy (kJ) | 2397 kJ | 29% | 1198.5 kJ | 14% |
| Energy (kcal) | 573 kcal | 29% | 286.5 kcal | 14% |
| Fat | 38.1 g | 54% | 19.1 g | 27% |
| of which Saturates | 22.7 g | 114% | 11.4 g | 57% |
| Carbohydrate | 49.3 g | 19% | 24.7 g | 10% |
| of which Sugars | 48.3 g | 54% | 24.2 g | 27% |
| of which Polyols | 0 g | | - | |
| Fibre | 2 g | | 1 g | |
| Protein | 6.8 g | 14% | 3.4 g | 7% |
| Salt | < 0.01 g | 0% | - | |
| Sodium | 0 mg | | - | |
| Serving Size | 50 g | | | |

VITAMINS AND
MINERALS

| Nutrient | per 100g | RI per 100g | per 50g serving | RI per 50g serving |
|-----------|----------|-------------|-----------------|--------------------|
| Vitamin C | 0 mg | 0% | - | |

SUPPLEMENTARY
NUTRITIONAL
INFORMATION

| | |
|----------------------------------|-----|
| Cholesterol per 100 g/ml (UK/FR) | 0 g |
| Trans Fats per 100 g/ml | 0 g |

HANDLING &
STORAGE
INFORMATION

Directions For Use

Use as required

Storage Instructions

Store the product in a clean, dry (relative humidity max.70 %) and odourless environment. Recommended storage temperature: 12 - 20 °C

| | |
|------------------------------------|----------|
| Shelf Life from Time of Production | 720 Days |
|------------------------------------|----------|

ACCREDITATIONS/
CERTIFICATIONS/
ASSURANCE
SCHEMES

| | |
|-----------------|---------------------|
| BRCGS Certified | Other Accreditation |
|-----------------|---------------------|

| | | | | | | | | |
|-------------------------|---|-----------------|-------------------|--------------------------|-----------------------------------|------------|-----------|--|
| ORIGIN | Product Country of Origin | | Netherlands (the) | | | | | |
| | Additional Origin Details | | | | | | | |
| | BARRY CALLEBAUT DECORATIONS N.V. | | | | | | | |
| PRODUCT CHARACTERISTICS | Origin of the Primary Ingredient | | | | | | | |
| | Standards Testing | | | | | | | |
| | Do you undertake trend analysis of microbiological results? | | Yes | | Is shelf life testing undertaken? | | Yes | |
| CONFIGURATION | Case Configuration | | | Inner Pack Configuration | | | | |
| | Total Quantity of Inner Components in Outer Case | | 504 Units | | | | | |
| | Is the Outer Case Splittable? | | No | | | | | |
| | | | | | | | | |
| PRODUCT WEIGHTS | Inner Component | | | | | | | |
| | Variable Weight Consumer Item | | No | | | | | |
| | Inner Component Weight | | 1.36 kg | | | | | |
| | | | | | | | | |
| | Outer Case | | | | | | | |
| | Outer Case Gross Weight | | 2.16 kg | | | | | |
| | Outer Case Net Weight | | 1.36 kg | | | | | |
| | | | | | | | | |
| PRODUCT DIMENSIONS | Inner Component | | | | | | | |
| | Inner Component Depth | | 275 mm | | | | | |
| | Inner Component Width | | 358 mm | | | | | |
| | Inner Component Height | | 119 mm | | | | | |
| | Outer Case | | | | | | | |
| | Outer Case Depth | | 275 mm | | | | | |
| | Outer Case Width | | 358 mm | | | | | |
| | Outer Case Height | | 119 mm | | | | | |
| PALLET INFORMATION | Quantity of Cases Per Pallet Layer | | 12 Cases | | Pallet Height | | 0 MTR | |
| | Quantity of Layers Per Pallet | | 9 Layers | | Pallet Gross Weight | | 0 kg | |
| | Quantity of Cases Per Pallet | | 108 Cases | | | | | |
| | | | | | | | | |
| PACKAGING | Inner Component Packaging | | | | | | | |
| | Type | Materials | Weight | Recycled Plastic % | Recyclable | Returnable | Composite | |
| | Box | Paper/Cardboard | 799 g | - % | Yes | | | |
| | | | | | | | | |
| | Outer Case Packaging | | | | | | | |
| | Type | Materials | Weight | Recycled Plastic % | Recyclable | Returnable | Composite | |
| | Case | Paper/Cardboard | 0.8 g | - % | | | | |
| | | | | | | | | |
| SAFETY & WARNINGS | | | | | | | | |
| OTHER INFORMATION | | | | | | | | |

CONTACT
INFORMATION

Address

Barry Callebaut Belgium NV & IBC Belgium
Barry Callebaut (UK) Ltd
Wildmere Road, Wildmere Ind Estate
Banbury
OX16 3UU
United Kingdom

The information on the [Erudus System](#) has been supplied by the manufacturers of the products and, whilst the owners of the Erudus System take steps to ensure the information is regularly updated, they give no warranty and no guarantee that the information is accurate. Product information and ingredients may change, please always read product labels carefully in addition to using the information provided by Erudus.

We do not accept liability for any inaccuracies or incorrect information contained on this site.
Please visit <http://www.erudus.com/terms-and-conditions> for full terms and conditions.