

FA0992

# Mona Lisa Chocolate truffle shells (Dark couverture chocolate) 1.360kg 504pcs

Dark Couverture Chocolate 504x1.36kg

PRODUCT DESCRIPTION

Mona Lisa Chocolate truffle shells Dark couverture chocolate

Brand	Barry Callebaut Belgium NV & IBC Belgium
Manufacturer Product Code	CHD-TS-22350E0-999
Product Type	Food
Product Category	Confectionery
Storage Type	Ambient
Erudus ID	4c1cb174485048079cff3217930a1653
Specification Type	Legacy

Outer Case GTIN8711177648392



INGREDIENTS

Ingredient Declaration

sugar 45.0% , cocoa mass 36.0% , cocoa butter 18.0% , emulsifier lecithins (SOYA) <1%, natural vanilla flavouring <1%

ALLERGENS

Product Contains:

Celery/Celeriac	No
Cereals Containing Gluten	No
Barley	No
Oats	No
Rye	No
Wheat (including Spelt and Khorasan)	No
Gluten content <20ppm	Yes
Crustacea	No
Eggs	No
Fish	No
Lupin	No
Milk	May Contain
Molluscs	No

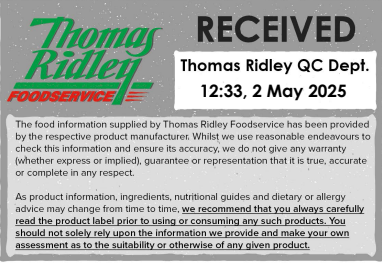
Risk Source:

Additional Allergen Information

May contain : Milk

SUPPLEMENTARY  
INGREDIENT  
INFORMATION

Palm Oil	No
Hydrogenated Vegetable Oil/Fat	No
GM Protein/DNA	No



Mustard	No
Nuts (Tree)	No
Almond nuts	No
Brazil nuts	No
Cashew nuts	No
Hazelnuts	No
Macadamia (Queensland) nuts	No
Pecan nuts	No
Pistachio nuts	No
Walnuts	No
Peanuts	No
Sesame Seeds	No
Soybeans	Yes
Sulphur Dioxide and Sulphites	No

Alcoholic Strength %Vol (ABV)	0 % Vol
-------------------------------	---------

ADDITIVES

Product Contains:

Artificial Antioxidants	No
Artificial Colours	No
Artificial Flavour Enhancers	No

Artificial Flavourings	No
Artificial Preservatives	No
Artificial Sweeteners	No

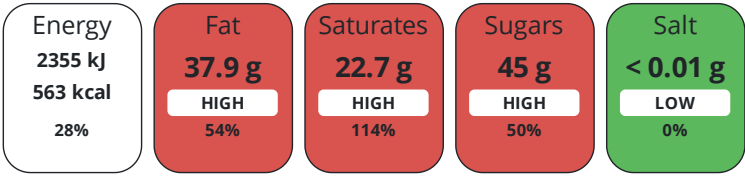
DIET  
SUITABILITY

Suitable for Coeliacs	No
Kosher Diet	No
Vegan Diet	No

Halal Diet	No
Vegetarian Diet	No

NUTRITIONAL  
INFORMATION

Each 100g/ml portion contains:



of your reference intake.

Typical values per 100g/ml : Energy 563kcal / 2355kj

Nutrient	per 100g/ml	RI per 100g/ml	per 50g/ml serving	RI per 50g/ml serving
Energy (kJ)	2355 kJ	28%	1177.5 kJ	14%
Energy (kcal)	563 kcal	28%	281.5 kcal	14%
Fat	37.9 g	54%	19 g	27%
of which Saturates	22.7 g	114%	11.4 g	57%
of which Mono-unsaturates	12.3 g		6.2 g	
of which Polyunsaturates	1.2 g		0.6 g	
Carbohydrate	47.3 g	18%	23.7 g	9%
of which Sugars	45 g	50%	22.5 g	25%
of which Polyols	0 g		-	
of which Starch	1.9 g		1 g	
Fibre	6.8 g		3.4 g	
Protein	4.3 g	9%	2.2 g	4%
Salt	< 0.01 g	0%	-	
Sodium	< 0.01 mg		-	

Serving Size	50 g
--------------	------

VITAMINS AND  
MINERALS

Nutrient	per 100g/ml	RI per 100g/ml	per 50g/ml serving	RI per 50g/ml serving
Vitamin A	15.22 µg	2%	7.6 µg	1%
Vitamin C	0 mg	0%	-	
Folate/Folic Acid	10.51 µg	5%	5.3 µg	3%
Calcium	23.9 mg	3%	12 mg	2%
Iron	10.63 mg	76%	5.3 mg	38%
Zinc	1.2 mg	12%	0.6 mg	6%

SUPPLEMENTARY  
NUTRITIONAL  
INFORMATION

Cholesterol per 100 g/ml (UK/FR)	0 g
Trans Fats per 100 g/ml	0 g

HANDLING &  
STORAGE  
INFORMATION

Directions For Use

Use as required

Storage Instructions

Store the product in a clean, dry (relative humidity max.70 %) and odourless environment. Recommended storage temperature:  
12 - 20 °C

Shelf Life from Time of Production720 Days

ACCREDITATIONS/  
CERTIFICATIONS/  
ASSURANCE  
SCHEMES  
ORIGIN

BRCGS Certified

Other Accreditation

Product Country of OriginNetherlands (the)

Additional Origin Details

BARRY CALLEBAUT DECORATIONS N.V.

PRODUCT  
CHARACTERISTICS

Standards Testing

Do you undertake trend analysis of microbiological results?Yes

Is shelf life testing undertaken?Yes

CONFIGURATION

Case Configuration

Inner Pack Configuration

Total Quantity of Inner Components in Outer Case504 Units

Is the Outer Case Splittable?No

PRODUCT  
WEIGHTS

Inner Component

Variable Weight Consumer ItemNo

Inner Component Weight1.36 kg

Outer Case

Outer Case Gross Weight2.16 kg

Outer Case Net Weight1.36 kg

PRODUCT  
DIMENSIONS

Inner Component

Inner Component Depth275 mm

Inner Component Width358 mm

Inner Component Height119 mm

Outer Case

Outer Case Depth275 mm

Outer Case Width358 mm

Outer Case Height119 mm

PALLET  
INFORMATION

Quantity of Cases Per Pallet Layer108 Cases

Pallet Height0 MTR

Quantity of Layers Per Pallet1 Layers

Pallet Gross Weight0 kg

Quantity of Cases Per Pallet1 Cases

PACKAGING

Inner Component Packaging

Type	Materials	Weight	Recycled Plastic %	Recyclable	Returnable	Composite
Box	Paper/Cardboard	799 g	- %			

Outer Case Packaging

Type	Materials	Weight	Recycled Plastic %	Recyclable	Returnable	Composite
Case	Paper/Cardboard	0.8 g	- %			

OTHER  
INFORMATION

CONTACT  
INFORMATION

Address

Barry Callebaut Belgium NV & IBC Belgium  
Barry Callebaut (UK) Ltd  
Wildmere Road, Wildmere Ind Estate  
Banbury  
OX16 3UU  
United Kingdom

The information on the [Erudus System](#) has been supplied by the manufacturers of the products and, whilst the owners of the Erudus System take steps to ensure the information is regularly updated, they give no warranty and no guarantee that the information is accurate. Product information and ingredients may change, please always read product labels carefully in addition to using the information provided by Erudus.

We do not accept liability for any inaccuracies or incorrect information contained on this site.  
Please visit <http://www.erudus.com/terms-and-conditions> for full terms and conditions.